

---

# Nokia Asha 205 User Guide

---

## Contents

Keys and parts.....	5
Insert a SIM card and battery.....	7
Insert a memory card.....	8
Charge the battery.....	9
Lock the keys .....	10
Copy content from your old phone.....	10
Explore your phone.....	12
Shortcut keys.....	13
Indicators on your phone.....	13
Make or answer a call.....	14
Call the last dialled number.....	15
View your missed calls.....	15
Change the volume.....	16
Save a name and phone number.....	16
Make calls quickly.....	18
Check your voicemail.....	19
Keys on the keyboard .....	20
Write text.....	20

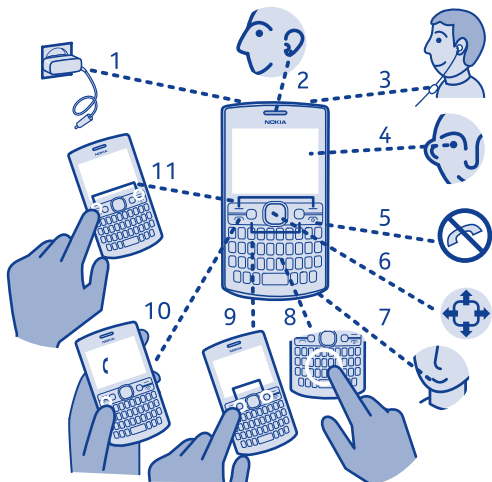
---

Copy, cut or paste text.....	21
Use predictive text.....	22
Send a message.....	23
Personalise your home screen.....	24
Add shortcuts to your home screen.....	25
Change your ringtone.....	26
Set an alarm.....	27
Add an appointment.....	28
Listen to the radio.....	29
Play a song.....	30
Take a photo.....	31
Share your content using Nokia Slam.....	32
Send a photo using Bluetooth.....	33
Record a video.....	34
Browse the web.....	35
Add a bookmark.....	36
Set up your mail account.....	37
Send a mail.....	37

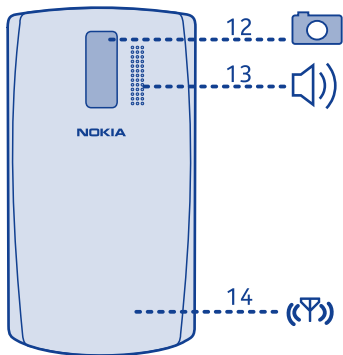
---

Set up chat in your phone.....	39
Chat with your friends.....	40
Restore original settings.....	41
Update phone software using your phone.....	42
Back up content to a memory card.....	43
Access codes.....	44
Troubleshooting.....	46
General information.....	47

## Keys and parts



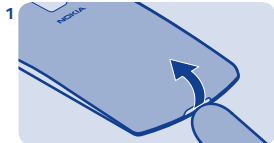
- |   |                            |    |                              |
|---|----------------------------|----|------------------------------|
| 1 | Charger connector          | 7  | Microphone                   |
| 2 | Earpiece                   | 8  | Keyboard                     |
| 3 | Headset connector (3.5 mm) | 9  | Left and right shortcut keys |
| 4 | Screen                     | 10 | Call key                     |
| 5 | End/Power key              | 11 | Selection keys               |
| 6 | Scroll key                 |    |                              |



- 12 Camera lens. Before using the camera, remove the protective tape from the lens.
- 13 Loudspeaker
- 14 Antenna area. See ➡ 1 in "Feature-specific instructions".

Your phone uses S40 software.

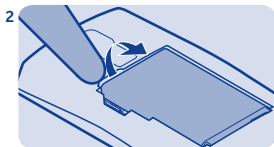
## Insert a SIM card and battery



Switch the phone off, and remove the back cover.



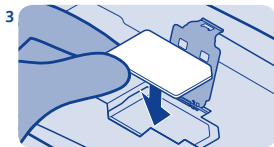
Line up the battery contacts, and push the battery in.



If the battery is in the phone, lift it out.




Press the back cover down until it locks into place.

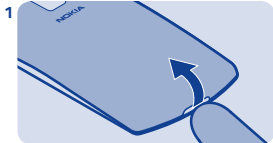


Lift the SIM card holder, and place the SIM in the holder with the contact area face down. See ➡ 3.

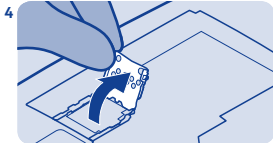


To switch on, press and hold  until the phone vibrates.

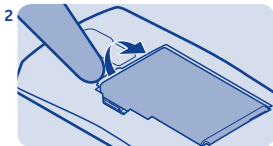
## Insert a memory card



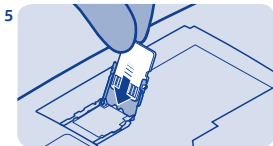
Switch the phone off, and remove the back cover.



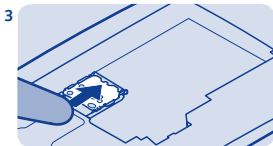
Lift the holder.



If the battery is in the phone, lift it out.



Put a compatible memory card in with the contact area face down.



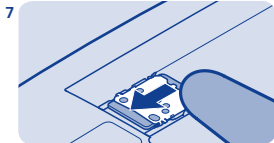
Slide the memory card holder towards the bottom of the phone.



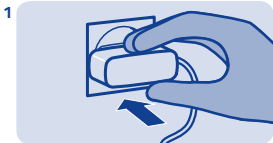
Lower the holder.



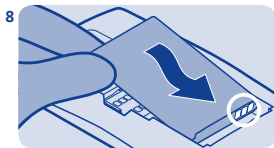
## Charge the battery



Slide the holder to its original position.



Plug the charger into a wall outlet.



Line up the battery contacts, and push the battery in.



Connect the charger to the phone. See ➡ 4.



Replace the back cover. See ➡ 2.



Battery full? Unplug from the phone, then from the wall outlet.

## Lock the keys



Lock the keys when not using your phone.

## Copy content from your old phone



Easily get your contacts, calendar, and other stuff to your new phone.



Select **Menu**, and press the function key.



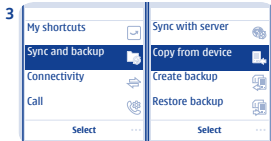
Switch Bluetooth on in both phones.



To unlock, select **Unlock**, and press the function key.



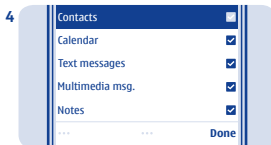
Select **Menu** > **Settings**.



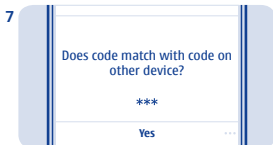
Select **Sync and backup** > **Copy from device**.  
Select



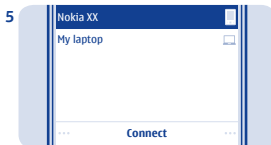
If asked, create a one-time passcode (such as 123), and select **OK**.



Select what you want to copy, and select **Done**.



Check that the codes match on both phones.



Select your old phone from the list of found devices.



Follow the instructions shown on both phones.

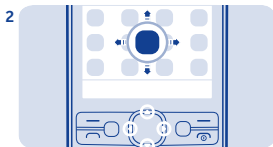
## Explore your phone



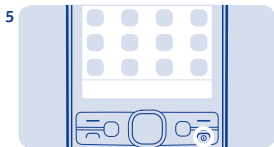
To see the features and apps in your phone, press **Menu**.



To go back to the previous view, press **Back**.



To go to an app or feature, press the scroll key up, down, left, or right.



To go back to the home screen, press **Forward**.



To open the app or select the feature, press **Select**.

## Shortcut keys



Use the left shortcut key to open a social app or web browser and the right shortcut key to open messaging quickly. The available options may vary.

When you press the right shortcut key for the first time, select what it opens. To later set what the key opens, select **Menu > Settings and My shortcuts**.

## Indicators on your phone



— You have unread messages.



— You have unsent, cancelled, or failed messages.



— The keys are locked.



— The phone doesn't ring when somebody calls or sends a message.



— An alarm is set.



— The phone is connected to a GPRS or EGPRS network.



— A GPRS or EGPRS connection is open.



— The GPRS or EGPRS connection is on hold.



— Bluetooth is on.



— All incoming calls are forwarded to another number.



— A headset is connected to the phone.

## Make or answer a call



Call your friend. See ➡ 5.

3



When your phone rings, press  to answer. See ➡ 6.

1



Type in the phone number, and press .

2

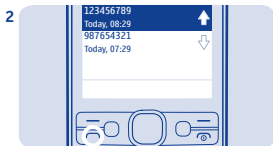


To end the call, press .

## Call the last dialed number

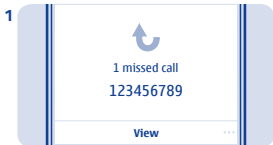


On the home screen, press .



Select the number, and press .

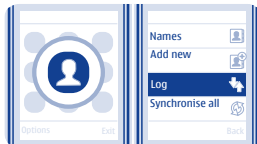
## View your missed calls



On the home screen, select **View**. See  7.



To call back, select the number, and press .

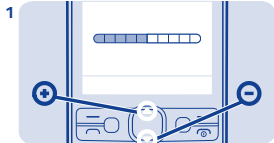


**Tip:** To view missed calls later, select **Menu > Contacts > Log > Missed calls**.

## Change the volume



Is the volume too loud during a call or when listening to the radio?



Scroll up or down.

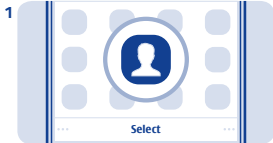


Better.

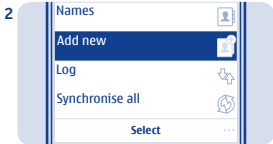
## Save a name and phone number



Add new contacts to your phone.

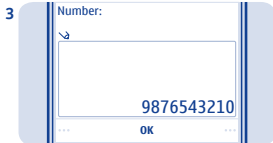


Select **Menu** > **Contacts**.



Select **Add new**.

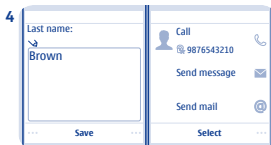




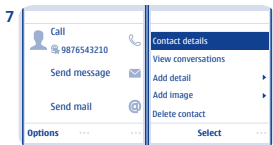
Type in the phone number, then select **OK**.



To search for a contact, start writing the contact's name in the search box.



Write the first and last name, then select **Save**.

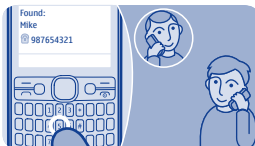


Select **Options** > **Contact details**.

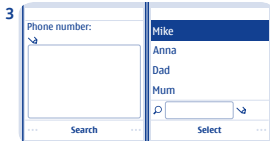


To edit details, select **Names** and a contact.

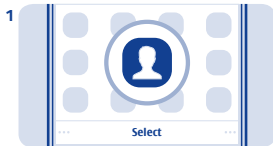
## Make calls quickly



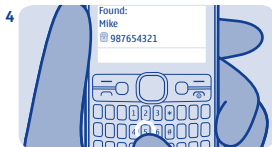
Call someone often? Set their number as a speed dial.



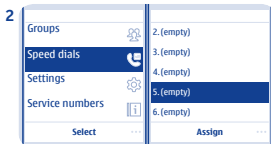
Select **Search** and a contact.



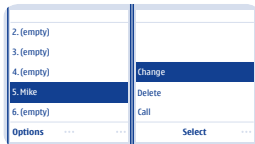
Select **Menu** > **Contacts**.



To call, press and hold a number key on the home screen.



Select **More** > **Speed dials** and a free slot, then select **Assign**.



**Tip:** To change a speed dial, select **Options** > **Change**.

## Check your voicemail



When you can't answer, you can forward calls to your voicemail.

3



When setting up voicemail, type in your voice mailbox number.

1

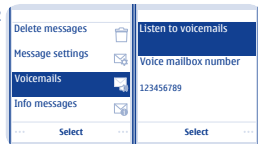


Select **Menu** > **Messaging**.



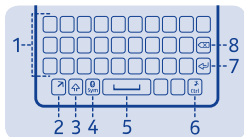
**Tip:** To quickly call your voicemail, press and hold **1** on the home screen.

2



Select **More** > **Voicemails** > **Listen to voicemails**.

## Keys on the keyboard



- 1 Keyboard
- 2 Function key
- 3 Shift key
- 4 Sym key
- 5 Space key
- 6 Ctrl key
- 7 Enter key
- 8 Backspace key

## Write text

With the keyboard you can write your messages in no time.

### Set the writing language


Select **Options > Writing language** and the language you want. To change the writing language, you can also press the function key and the ctrl key.

### Switch to number mode

Press the function key twice. To go back to letter mode, press the function key.

### Switch between character cases

Press the shift key.

 **Tip:** To type in several upper case letters, press the shift key twice.

### Type in the number or character printed at the top right corner of a key

Press and hold the key. This feature is not available for all languages.

### Delete a character

Press the backspace key .

---

## Copy, cut or paste text

**Type in a special character or symbol** Want to edit your text more quickly? Copy, cut, and paste to rearrange text easily.

Press the sym key, and select the symbol.

### Type in an accented character

While pressing and holding the sym key, press the character key repeatedly.

### Move the cursor to the next row or text box

Press the enter key.

### Type in a space

Press the space key.

### Copy or cut

1. Press and hold the shift key, and scroll to highlight a word, phrase, or section of text. To select all the text, while pressing and holding the ctrl key, press **A**.

2. Press and hold the ctrl key, and press **C** (copy) or **X** (cut).

### Paste

Press and hold the ctrl key, and press **V**.

---

## Use predictive text

To speed up your writing, your phone can guess what you are starting to write.

Predictive text is based on a built-in dictionary. This feature is not available for all languages.

### Switch predictive text on or off

Select **Options > More > Prediction settings > Prediction** and select **On** or **Off**.

### Switch between predictive and traditional text

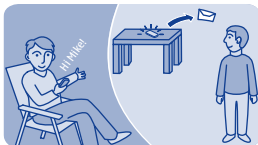
While pressing and holding the ctrl key, press the space key.

You can also select and hold **Options**.

### Use predictive text when writing

1. Start writing a word.
2. Your phone suggests possible words. To confirm a word, press the space key.
3. To see alternative word matches, scroll down.

## Send a message



Keep in touch with people through messages. See ➡ 9.

3

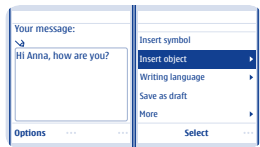


Write your message.

1

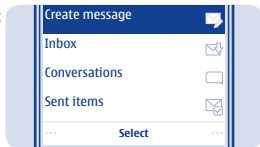


Select **Menu** > **Messaging**.



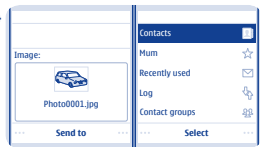
**Tip:** To add an attachment, select **Options** > **Insert object**. See ➡ 10.

2



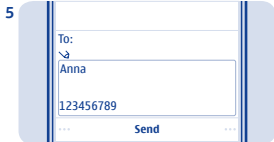
Select **Create message**.

4

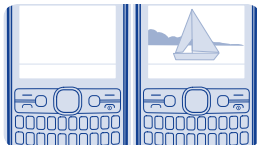


To add a recipient, select **Send to** > **Contacts**.

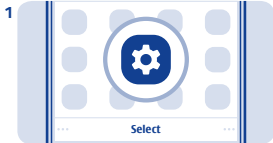
## Personalise your home screen



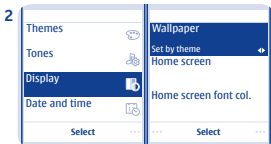
Select **Send**. See ➡ 11, 12.



You can change the wallpaper, and rearrange items on the home screen.



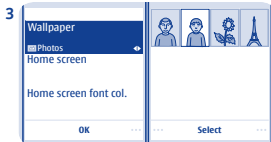
Select **Menu** > **Settings**.



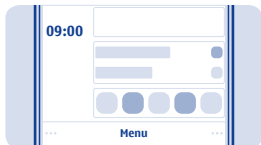
Select **Display**, scroll to **Wallpaper**, then scroll to a folder.



## Add shortcuts to your home screen



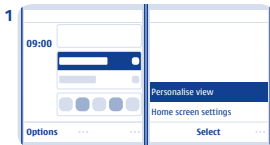
Select **OK** to open the folder, then select a photo.



Add shortcuts to your favourite apps to your home screen.



**Tip:** You can also take a photo on your phone camera, and use that.

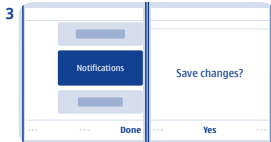


Scroll to a shortcut, then select **Options > Personalise view**.



Select a bar, then select an item, such as a widget.

## Change your ringtone



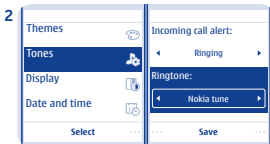
Select **Done** > **Yes**.



Set a different ringtone for each profile.

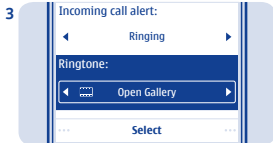


Select **Menu** > **Settings**.



Select **Tones**, and scroll to **Ringtone:**.

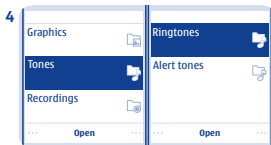
## Set an alarm



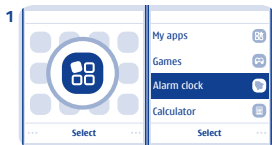
Scroll to **Open Gallery**, and select **Select**.



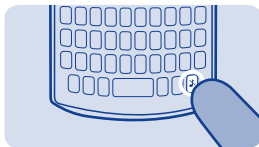
Use your phone as an alarm clock.



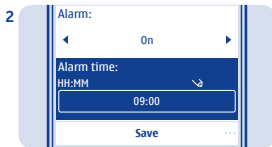
Select **Tones** > **Ringtones** and a ringtone.



Select **Menu** > **Apps** > **Alarm clock**.

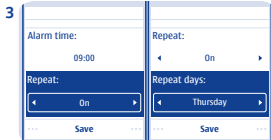


**Tip:** To switch between the silent and normal profile, press and hold .

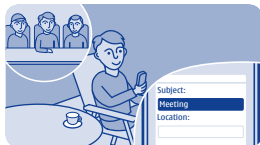


Set the alarm time, and select **Save**.

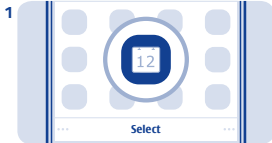
## Add an appointment



To repeat the alarm, set **Repeat:** to **On**, and select **Repeat days:** and the days and **Done**.



Need to remember an appointment? Add it to your calendar.

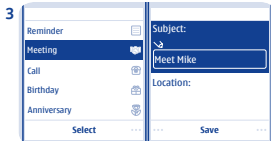


Select **Menu** > **Calendar**.



Select a date and **View** > **Add**.

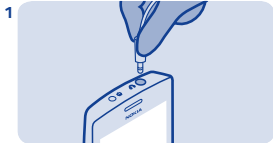
## Listen to the radio



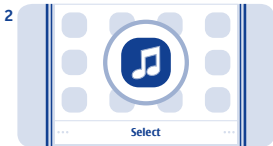
Select **Meeting**, fill in the fields, then select **Save**.



Listen to your favourite radio stations on your phone.

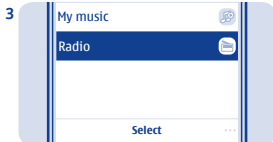


Connect a compatible headset. It acts as an antenna.



Select **Menu** > **Music**.

## Play a song



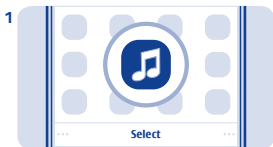
Select **Radio**.



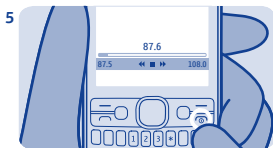
Listen to your favourite music on your phone.



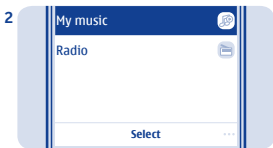
To change the volume, scroll up or down.



Select **Menu > Music**.

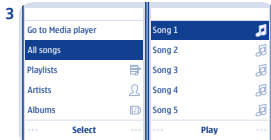


To close the radio, press .



Select **My music**.

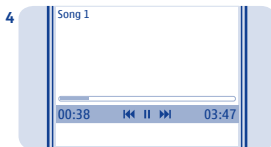
## Take a photo



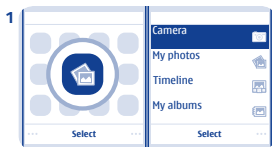
Select the song you want to play.



There's a camera in your phone - just aim and snap!



To pause or resume playing, press the scroll key.



To open the camera, select **Menu > Photos > Camera**.



To close the music player, press



To zoom in or out, scroll up or down.

## Share your content using Nokia Slam



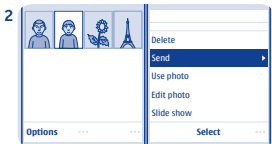
Select .  
The photos are saved in My photos.



Share your content easily with Nokia Slam.



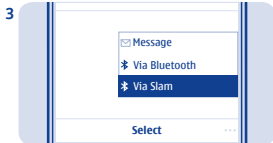
Switch Bluetooth on in both phones.  
Your phone must not be hidden.



Select, for example, a photo to share,  
and **Options** > **Send**.



## Send a photo using Bluetooth



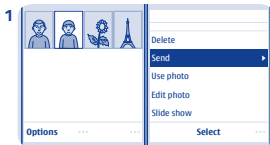
Select **Via Slam**.



Send a photo you have taken to your PC. See ➡ 13.



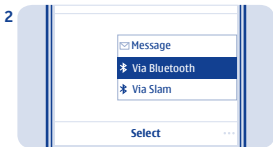
Move your phone close to the other phone.



Select the photo and **Options** > **Send**.

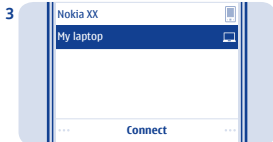


Nokia Slam searches for the nearest phone, and sends the item to it.



Select **Via Bluetooth**.

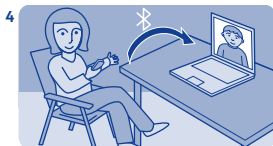
## Record a video



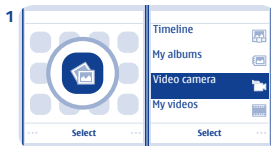
Select the device to connect to. If asked, type in the passcode.



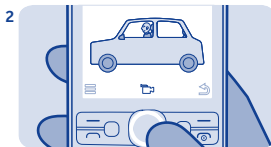
Besides taking photos, you can also record videos with your phone.



The photo is sent to your PC.

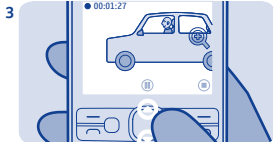


To open the camera, select **Menu > Photos > Video camera**.



To start recording, select .

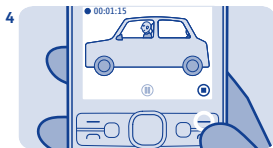
## Browse the web



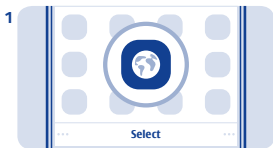
To zoom in or out, scroll up or down.



Catch up on the news, and visit your favourite websites.



To stop recording, select . Videos are saved in My videos.

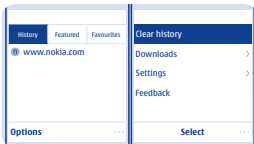


Select **Menu** > **Internet**.



To go to a website, write the web address in the address bar.

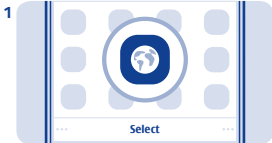
## Add a bookmark



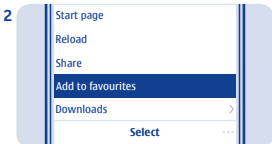
**Tip:** On the History tab, you can select **Options > Clear history**.



If you visit the same websites often, add them as bookmarks.



Select **Menu > Internet**.



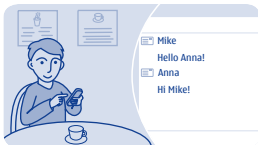
While browsing, select **Options > Add to favourites**.

## Set up your mail account

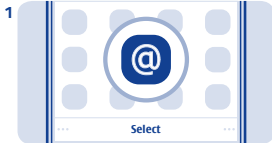
## Send a mail



Want to use mail, but don't have a computer? You can use your phone.



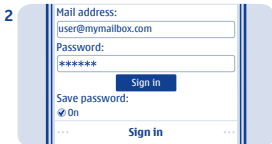
You can read and send mail while on the move.



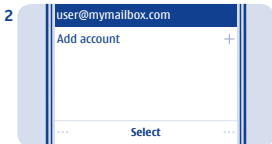
Select **Menu** > **Mail**.



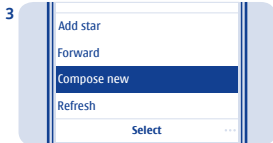
Select **Menu** > **Mail**.



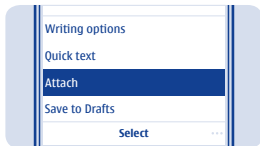
Select a mail service, and sign in.



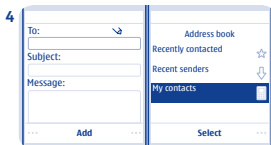
Select a mail account.



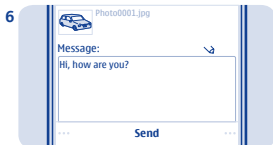
In the mailbox, select **Options** > **Compose new**.



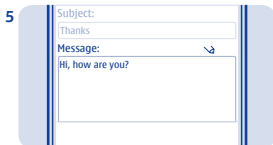
**Tip:** To attach a file, select **Options** > **Attach**.



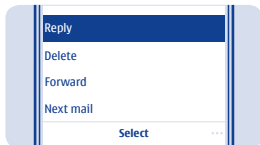
To add a recipient, select **Add**, or manually write the address.



Select **Send**.



Write the subject and your message.

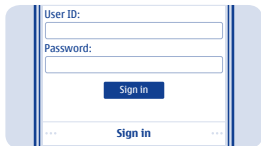


**Tip:** To reply to a mail, open the mail, and select **Options** > **Reply**.

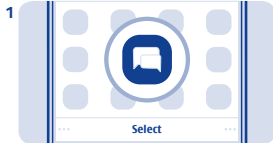
## Set up chat in your phone



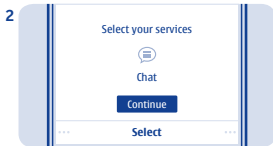
Set up chat to keep in touch with your friends wherever you are.



**Tip:** If you don't have a chat account, you can sign in to Nokia Chat.



Select **Menu** > **Chat**.



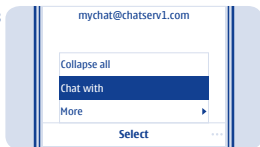
Select a service, and sign in.

## Chat with your friends



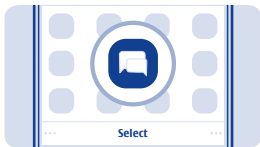
You can chat with your friends online while on the move.

3



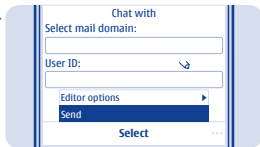
Select **Options** > **Chat with**.

1



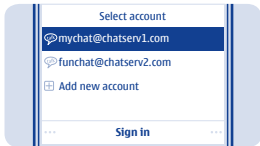
Select **Menu** > **Chat**.

4



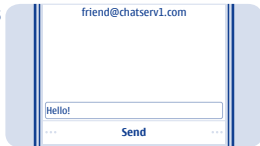
Select a chat service, write the username, and select **Options** > **Send**.

2



Select a chat account, and sign in.

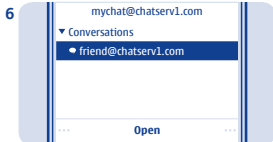
5



Write your message in the text box, and select **Send**. See ➡ 8.



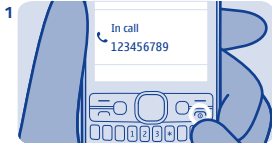
## Restore original settings



When you want to continue a conversation, select the thread.



If your phone is not working properly, reset the settings.

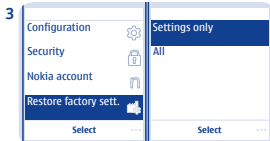


End all calls and connections.



Select **Menu** > **Settings**.

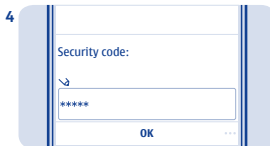
## Update phone software using your phone



Select **Restore factory sett.** > **Settings only.**



You can update your phone software wirelessly. You can also set your phone to automatically check for updates.

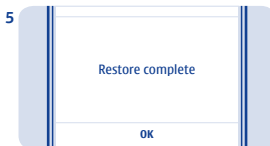



Type in the security code, then select **OK.**

Select **Menu** > **Settings** and **Phone** > **Device updates.**

1. To check if there is an update, select **Downl. phone software.**
2. To download and install an update, select **Downl. phone software**, and follow the instructions shown on the phone.

The update may take several minutes. If you encounter problems, contact your network service provider.



Your phone switches off and on again. This may take longer than usual. See  14.

### Check for updates automatically

Select **Automatic SW update**, and set how often to check.

Your network service provider may send updates over the air directly to your phone. For more info on this

---

## Back up content to a memory card

network service, contact your network service provider.



Want to make sure you won't lose any important files? You can back up your phone memory to a compatible memory card.

Select **Menu** > **Settings** > **Sync and backup**.

1. Select **Create backup**.
2. Select what you want to back up, then select **Done**.

### Restore a backup

Select **Restore backup**.

---

## Access codes

PIN or PIN2 code (4-8 digits)	<p>These protect your SIM against unauthorised use or are required to access some features.</p> <p>You can set your phone to ask for the PIN code when you switch it on.</p> <p>If not supplied with your card or you forget the codes, contact your service provider.</p> <p>If you type in the code incorrectly three times in a row, you need to unblock the code with the PUK or PUK2 code.</p>
PUK or PUK2 code (8 digits)	<p>These are required to unblock a PIN or PIN2 code.</p> <p>If not supplied with your SIM, contact your service provider.</p>
IMEI number (15 digits)	<p>This is used to identify valid phones in the network. The number can also be used to block, for example, stolen phones. You may also need to give the number to Nokia Care services.</p> <p>To view your IMEI number, dial <b>*#06#</b>.</p>
Lock code (security code)  (min. 5 digits)	<p>This helps you protect your phone against unauthorised use.</p> <p>You can set your phone to ask for the lock code that you define. The default lock code is 12345.</p> <p>Keep the code secret and in a safe place, separate from your phone.</p>

---

	<p>If you forget the code and your phone is locked, your phone will require service. Additional charges may apply, and all the personal data in your phone may be deleted.</p> <p>For more information, contact Nokia Care or your phone dealer.</p>
--	--

---

## Troubleshooting



- Longer version of this user guide
- Software update info
- Details about features and technologies, and the compatibility of devices and accessories

If you have an issue, do the following:

- Switch the phone off, and remove the battery. After about a minute, put the battery back in, and switch the phone on again.

- Update your phone software:

Select **Menu > Settings and Phone > Device updates.**

- Restore the original factory settings: End all calls and connections, and select **Menu > Settings and Restore factory sett. > Settings only.**

If your issue remains unsolved, contact Nokia for repair options at [www.nokia.com/support](http://www.nokia.com/support). Before sending your phone for repair, back up your data, as all personal data in your phone may be deleted.

You can also go to [www.nokia.com/support](http://www.nokia.com/support) where you can find:

- Troubleshooting info
- News on apps and downloads

## General information

Read these simple guidelines. Not following them may be dangerous or illegal. For further info, read the complete user guide.



### **SWITCH OFF IN RESTRICTED AREAS**

Switch the device off when mobile phone use is not allowed or when it may cause interference or danger, for example, in aircraft, in hospitals or near medical equipment, fuel, chemicals, or blasting areas. Obey all instructions in restricted areas.



### **ROAD SAFETY COMES FIRST**

Obey all local laws. Always keep your hands free to operate the vehicle while driving. Your first consideration while driving should be road safety.



### **INTERFERENCE**

All wireless devices may be susceptible to interference, which could affect performance.



### **QUALIFIED SERVICE**

Only qualified personnel may install or repair this product.



### **KEEP YOUR DEVICE DRY**

Your device is not water-resistant. Keep it dry.



### **PROTECT YOUR HEARING**

To prevent possible hearing damage, do not listen at high volume levels for long periods. Exercise caution when holding your device near your ear while the loudspeaker is in use.

## Product and safety information


### Feature-specific instructions

The images in this guide may differ from your device screen.

To turn off notifications from apps to avoid data transfer costs, go to **Menu > Apps > My apps > Notifications > Options > Settings**.

➡ 1 Avoid touching the antenna area while the antenna is in use. Contact with antennas affects the communication quality and may reduce battery life due to higher power level during operation.

➡ 2 Use only compatible memory cards approved for use with this device. Incompatible cards may damage the card and the device and corrupt data stored on the card.

➡ 3  **Important:** This device is designed to be used with a standard SIM card (see figure) only. Use of incompatible SIM cards may damage the card or the device, and may corrupt data stored on the card. Please consult your mobile operator for the use of a SIM card that has a mini-UICC cutout.




➡ 4 If the battery is completely discharged, it may take several minutes before the

---

charging indicator is displayed or before any calls can be made.

➡ 5 To type in the + character, used for international calls, press +.

➡ 6  **Warning:** When the flight profile is activated, you cannot make or receive any calls, including emergency calls, or use other features that require network coverage. To make a call, activate another profile.

➡ 7 Missed and received calls are logged only if supported by the network, and the phone is switched on and within the network service area.

➡ 8 Using services or downloading content may cause transfer of large amounts of data, which may result in data traffic costs.

➡ 9 You can send text messages that are longer than the character limit for a single message. Longer messages are sent as two or more messages. Your service provider may charge accordingly.

Characters with accents, other marks, or some language options, take more space, limiting the number of characters that can be sent in a single message.

➡ 10 If the item you insert in a multimedia message is too large for the network, the device may automatically reduce the size.

➡ 11 Sending a message with an attachment may be more expensive than sending a normal text message. For more information, contact your service provider.

➡ 12 Only compatible devices can receive and show multimedia messages. Messages may look different in different devices.

➡ 13 Operating the device in hidden mode is a safer way to avoid malicious software. Do not accept Bluetooth connection requests from sources you do not trust. You can also switch the Bluetooth function off when you are not using it.

➡ 14 Restoring settings does not affect documents or files stored on your phone.

### **Nokia original accessories**

For availability of approved accessories, check with your dealer.

An extensive range of accessories is available for your device. For more details, see [www.nokia-asia.com/accessories](http://www.nokia-asia.com/accessories).

### **Practical rules about accessories**

- Keep all accessories out of the reach of small children.
- When you disconnect the power cord of any accessory, grasp and pull the plug, not the cord.
- Check regularly that accessories installed in a vehicle are mounted and are operating properly.



- Installation of any complex car accessories must be made by qualified personnel only.

## Battery


Type: BL-5C

Talk time:

Up to 11 hours.

Standby:

Up to 891 hours.

 **Important:** Battery talk and stand-by times are estimates and only possible under optimal network conditions. Actual battery talk and standby times depend on SIM cards, features used, battery age and condition, temperatures to which battery is exposed, network conditions, and many other factors, and may be significantly shorter than those specified above. Ringing tones, hands free call handling, use in digital mode, and other features will also consume the battery, and the amount of time a device is used for calls will affect its stand-by time. Likewise, the amount of time that the device is turned on and in the standby mode will affect its talk time.

## Tips and Offers

To help you take maximum advantage of your phone and services, you receive free customised text messages from Nokia. The

messages contain tips and tricks and support.

To stop receiving the messages, select **Menu > Settings > Nokia account > Tips and offers**.

To provide the service described above, your mobile phone number, the serial number of your phone, and some identifiers of the mobile subscription are sent to Nokia when you use the phone for the first time. Some or all information may also be sent to Nokia when updating software. This information may be used as specified in the privacy policy, available at [www.nokia.com](http://www.nokia.com).

## Network services and costs

Your device is approved for use on the GSM 900, 1800 MHz networks. You need a subscription with a service provider.

Using some features and downloading content require network connection and may result in data costs. You may also need to subscribe to some features.

## Take care of your device

Handle your device, battery, charger and accessories with care. The following suggestions help you keep your device in operation.

- Keep the device dry. Precipitation, humidity, and all types of liquids or moisture can contain minerals that corrode electronic circuits. If your device gets wet, remove the battery, and allow the device to dry.

- Do not use or store the device in dusty or dirty areas.
- Do not store the device in high temperatures. High temperatures may damage the device or battery.
- Do not store the device in cold temperatures. When the device warms to its normal temperature, moisture can form inside the device and damage it.
- Do not open the device other than as instructed in the user guide.
- Unauthorised modifications may damage the device and violate regulations governing radio devices.
- Do not drop, knock, or shake the device. Rough handling can break it.
- Only use a soft, clean, dry cloth to clean the surface of the device.
- Do not paint the device. Paint can prevent proper operation.
- Switch off the device and remove the battery from time to time for optimum performance.
- Keep your device away from magnets or magnetic fields.
- To keep your important data safe, store it in at least two separate places, such as your device, memory card, or computer, or write down important info.

## Recycle

Always return your used electronic products, batteries, and packaging materials to dedicated collection points. This way you help prevent uncontrolled waste disposal and promote the recycling of materials. Check how to recycle your Nokia products at [www.nokia.com/recycling](http://www.nokia.com/recycling).

For more info on recycling, see “Mobile Phone Recycling Explained in 2 Minutes” <http://www.youtube.com/watch?v=jD5yLicr6Js>

## About Digital Rights Management

When using this device, obey all laws and respect local customs, privacy and legitimate rights of others, including copyrights. Copyright protection may prevent you from copying, modifying, or transferring photos, music, and other content.

Digital rights management (DRM) protected content comes with an associated licence that defines your rights to use the content.

With this device you can access content protected with OMA DRM 2.0 and 2.1 . If certain DRM software fails to protect the content, content owners may ask that such DRM software's ability to access new DRM-protected content be revoked. Revocation may also prevent renewal of such DRM-protected content already in your device. Revocation of such DRM software does not affect the use of content protected with other types of DRM or the use of non-DRM-protected content.

If your device has OMA DRM-protected content, use Nokia Suite to back up both the licences and the content. Other transfer methods may not transfer the licences which need to be restored with the content for you to be able to continue the use of OMA DRM-protected content after the device memory is formatted. You may also need to restore

---

the licences if the files on your device become corrupted.


## **Batteries and chargers**

### **Battery and charger info**

Use your device only with an original BL-5C rechargeable battery. Nokia may make additional battery models available for this device.

Charge your device with: AC-11 charger.

The battery can be charged and discharged hundreds of times, but it will eventually wear out. When the talk and standby times are noticeably shorter than normal, replace the battery.

 **Important:** Talk and standby times are estimates only. Actual times are affected by, for example, network conditions, device settings, features being used, battery condition, and temperature.

### **Battery safety**

Always switch the device off and unplug the charger before removing the battery. To unplug a charger or an accessory, hold and pull the plug, not the cord.

When your charger is not in use, unplug it. Do not leave a fully charged battery connected to a charger, as overcharging may shorten the battery's lifetime. If left unused, a fully charged battery will lose its charge over time.

Always keep the battery between 15°C and 25°C (59°F and 77°F). Extreme temperatures reduce the capacity and lifetime of the battery. A device with a hot or cold battery may not work temporarily.

Accidental short-circuiting can happen when a metallic object touches the metal strips on the battery. This may damage the battery or the other object.

Do not dispose of batteries in a fire as they may explode. Obey local regulations. Recycle when possible. Do not dispose as household waste.

Do not dismantle, cut, crush, bend, puncture, or otherwise damage the battery in any way. If a battery leaks, do not let liquid touch skin or eyes. If this happens, immediately flush the affected areas with water, or seek medical help. Do not modify, attempt to insert foreign objects into the battery, or immerse or expose it to water or other liquids. Batteries may explode if damaged.


Use the battery and charger for their intended purposes only. Improper use, or use of unapproved or incompatible batteries or chargers may present a risk of fire, explosion, or other hazard, and may invalidate any approval or warranty. If you believe the battery or charger is damaged, take it to a service centre before continuing to use it. Never use a damaged battery or charger. Only use the charger indoors.

---

## Additional safety information

### Make an emergency call

1. Make sure the device is switched on.
2. Check for adequate signal strength. You may also need to do the following:
  - Put a SIM card in the device.
  - Switch the call restrictions off in your device, such as call barring, fixed dialling, or closed user group.
  - Make sure the flight profile is not activated.
3. Press the end key repeatedly, until the home screen is shown.
4. Type in the official emergency number for your present location. Emergency call numbers vary by location.
5. Press the call key.
6. Give the necessary info as accurately as possible. Do not end the call until given permission to do so.

 **Important:** Activate both cellular and internet calls, if your device supports internet calls. The device may attempt to make emergency calls both through cellular networks and through your internet call service provider. Connections in all conditions cannot be guaranteed. Never rely solely on any wireless device for essential communications like medical emergencies.

### Small children

Your device and its accessories are not toys. They may contain small parts. Keep them out of the reach of small children.

## Medical devices

Operation of radio transmitting equipment, including wireless phones, may interfere with inadequately shielded medical devices' function. Consult a physician or the medical device's manufacturer to determine if it is adequately shielded from external radio energy.

### Implanted medical devices

To avoid potential interference, manufacturers of implanted medical devices recommend a minimum separation of 15.3 centimetres (6 inches) between a wireless device and the medical device. Persons who have such devices should:

- Always keep the wireless device more than 15.3 centimetres (6 inches) from the medical device.
- Not carry the wireless device in a breast pocket.
- Hold the wireless device to the ear opposite the medical device.
- Switch the wireless device off if there is any reason to suspect that interference is taking place.
- Follow the manufacturer directions for the implanted medical device.

If you have any questions about using your wireless device with an implanted medical device, consult your health care provider.


### Accessibility solutions

Nokia is committed to making mobile phones easy to use for all individuals, including those with disabilities. For more information, visit

---

the Nokia website at [www.nokiaaccessibility.com](http://www.nokiaaccessibility.com).

## Hearing

 **Warning:** When you use the headset, your ability to hear outside sounds may be affected. Do not use the headset where it can endanger your safety.

Some wireless devices may interfere with some hearing aids.

## Nickel

The surface of this device is nickel-free.

## Protect your device from harmful content

Your device may be exposed to viruses and other harmful content. Take the following precautions:

- Be cautious when opening messages. They may contain malicious software or otherwise be harmful to your device or computer.
- Be cautious when accepting connectivity requests, browsing the internet, or downloading content. Do not accept Bluetooth connections from sources you do not trust.
- Only install and use services and software from sources that you trust and that offer adequate security and protection.
- Install antivirus and other security software on your device and any connected computer. Only use one antivirus app at a time. Using more may affect performance and operation of the device and/or computer.

- If you access preinstalled bookmarks and links to third party internet sites, take the appropriate precautions. Nokia does not endorse or assume liability for such sites.

## Operating environment

This device meets radio frequency exposure guidelines in the normal use position at the ear or at least 1.5 centimetre (5/8 inch) away from the body. Any carry case, belt clip, or holder for body-worn operation should not contain metal and should position the device the above-stated distance from your body.

The sending of data files or messages requires a quality network connection and may be delayed until such a connection is available. Follow the separation distance instructions until the sending is completed.

## Vehicles

Radio signals may affect improperly installed or inadequately shielded electronic systems in vehicles. For more info, check with the manufacturer of your vehicle or its equipment.

Only qualified personnel should install the device in a vehicle. Faulty installation may be dangerous and invalidate your warranty. Check regularly that all wireless device equipment in your vehicle is mounted and operating properly. Do not store or carry flammable or explosive materials in the same compartment as the device, its parts, or accessories. Do not place your device or accessories in the air bag deployment area.

---

### **Potentially explosive environments**

Switch your device off in potentially explosive environments, such as near petrol pumps. Sparks may cause an explosion or fire resulting in injury or death. Note restrictions in areas with fuel; chemical plants; or where blasting operations are in progress. Areas with a potentially explosive environment may not be clearly marked. These usually are areas where you are advised to switch your engine off, below deck on boats, chemical transfer or storage facilities, and where the air contains chemicals or particles. Check with the manufacturers of vehicles using liquefied petroleum gas (such as propane or butane) if this device can be safely used in their vicinity.

### **Certification information (SAR)**

#### **This mobile device meets guidelines for exposure to radio waves.**

Your mobile device is a radio transmitter and receiver. It is designed not to exceed the limits for exposure to radio waves recommended by international guidelines. These guidelines were developed by the independent scientific organisation ICNIRP and include safety margins designed to assure the protection of all persons, regardless of age and health.

The exposure guidelines for mobile devices employ a unit of measurement known as the Specific Absorption Rate or SAR. The SAR limit stated in the ICNIRP guidelines is 2.0 watts/kilogram (W/kg) averaged over 10 grams of tissue. Tests for SAR are conducted

using standard operating positions with the device transmitting at its highest certified power level in all tested frequency bands. The actual SAR level of an operating device can be below the maximum value because the device is designed to use only the power required to reach the network. That amount changes depending on a number of factors such as how close you are to a network base station.

The highest SAR value under the ICNIRP guidelines for use of the device at the ear is 0.69 W/kg.

Use of device accessories may result in different SAR values. SAR values may vary depending on national reporting and testing requirements and the network band. Additional SAR information may be provided under product information at [www.nokia.com](http://www.nokia.com).

### **NOKIA SERVICE TERMS**

#### **Terms of Use**

##### **1. Acceptance**

These Nokia Service Terms together with the Privacy Policy and all other additional terms and information that may be provided within the Service (collectively "Terms") govern your use of the service, site, content and software (collectively the "Service"). By registering for or using the Service or any portion of it you accept the Terms.

The Terms constitute an agreement between you and Nokia Corporation, Keilalahdentie

---

2-4, 02150 Espoo, Finland including its affiliates and suppliers (collectively “Nokia”), defining your and Nokia’s rights and responsibilities with respect to the Service.

## **2. Eligibility**

To use the Service, you must be at least thirteen (13) years of age. If you are under thirteen (13) years of age, or at least thirteen (13) years of age but a minor where you live, you must have your parent or legal guardian accept your registration on your behalf and approve your use of the Service. Anyone completing the registration must be legally competent.

## **3. Registration and Termination**

To use a Service you may need to register and create a Nokia account with username and a password. You may need to provide us with certain personal and other information. Nokia may verify your email address before account can be used. Upon first use of your device and each time you update the Nokia device software, a text message will be sent to Nokia. The creation of a Nokia Account will require data transmission. Data transmission costs may apply.

You agree to provide truthful and complete information when you register for the Service and to keep that information updated. You must take due care to protect your username and password against misuse by others and promptly notify Nokia about any misuse. You, and your parent or legal

guardian if you are a minor, are personally responsible for any use of the Service.

You may terminate your registration if you no longer wish to use the Service. After termination, you will no longer have access to the Service. Nokia may terminate your registration or restrict your access to certain parts of the Service if Nokia reasonably believes that you have breached the Terms or with prior notice if you have not signed into the Service with your username in the past six (6) months.

Except as set forth in the Privacy Policy, Nokia is not responsible for any removal or loss of the information or content you have submitted to the Service. When information or content is removed from the Service by either you or Nokia, traces or copies may still remain elsewhere.

## **4. Licenses**

Nokia grants you a non-exclusive, non-transferable license, revocable at any time at Nokia’s sole discretion, to access and use the Service strictly in accordance with the Terms. Use of the Service does not grant you any intellectual property rights in or to any information or content in the Service.

As part of the Service, Nokia may provide you with content developed by Nokia or its licensors (“Content”). Nokia grants you a non-exclusive and perpetual license to use Content for the purpose it is intended, unless otherwise defined in the applicable Terms or

---

the purchase order. Some Content may only be available to residents of certain geographical areas. You are bound by any restrictions applicable to specific Content you obtain through the Service. Any license acquired to third-party Content is a binding agreement between you and the third-party Content provider. You have only the rights to the Content which are expressly granted here.

As part of the Service, Nokia may provide you with certain software developed by Nokia or, its licensors ("Software"). Your use of Software may be subject to separate terms and conditions that you must accept before using the Software. If there are no separate terms and conditions applicable to such Software, the following terms apply: Nokia grants to you a limited, non-exclusive, non-transferable right to install and use the Software on your computer and/or mobile device. You may not copy the Software, except to make a single archival backup copy. You may not distribute, transfer the right to use, modify, translate, reproduce, resell, sublicense, rent, lease, reverse engineer, or otherwise attempt to discover the source code of or make derivative works of the Software. For open source licensed software, applicable open source license terms apply.

The Software maybe subject to export controls under the U.S. Export Administration Regulations and other import or export control regulations. You agree to strictly comply with all applicable import and export regulations and acknowledge that you

have the responsibility to obtain licenses to export, re-export, transfer, or import such Software.

You may be able to submit information or content ("Material") to the Service. Nokia does not claim ownership in your Material. Your submission of Material does not transfer ownership of rights of the Material to Nokia. Nokia is only transmitting the Material and is not responsible for editorial control over it. By submitting Material to the Service you grant Nokia a worldwide, non-exclusive, sub-licensable, assignable, fully paid-up, royalty-free, perpetual and irrevocable license to use, copy, publicly perform, display, distribute in any media and modify the Material to incorporate the Material into other works, and to grant similar sublicenses to the extent necessary for Nokia to provide the Service. You may be able to adjust this grant in the privacy and other settings of the Service.

You are solely responsible for taking backup copies of the data you store on the Service, including Content you upload. If the Service is discontinued or canceled, Nokia may permanently delete your data. Nokia has no obligation to return data to you after the Service is discontinued or canceled.

## 5. Using the Service

You agree to:

- Comply with applicable laws, the Terms and good manners;



- Use the Service only for your personal, non-commercial purposes;
- Not submit unlawful, offensive, inaccurate, misleading, abusive, pornographic, harassing, libelous or otherwise inappropriate Material;
- Obtain any consents, permission or licenses that may be legally required for you to submit any Material;
- Respect the privacy of others;
- Not distribute or post spam, unreasonably large files, chain letters, pyramid schemes, viruses; or
- Not use any other technologies or initiate other activities that may harm the Service, or the interest or property of the Service users.
- Not to use any automated systems or means to access, acquire, copy or monitor any part of the service.
- Be responsible for the consequences related to the Material that you post.

Nokia may but has no obligation to:

- Monitor or moderate any Content or Material;
- Remove any Material from the Service; and
- Restrict access to any part of the Service at any time in its sole discretion.

## 6. Content

Before downloading or accessing any Content, please check whether the Content which you wish to access is restricted by age or marked as potentially 'offensive' or 'explicit'. Nokia shall not be responsible for

any claims or offense caused or suffered by you accessing such Content.

You agree:

- To use the Content only for your personal, non-commercial purposes;
- To use the Content in accordance with the restrictions set out in the applicable laws, additional terms, guidelines and policies or on the product pages that apply to that particular piece of the Content;
- Not to make copies, give, sell, resell, loan, rent, offer, broadcast, send, distribute, transfer, communicate to the public, reproduce, modify, display, perform, commercially exploit or make the Content available unless otherwise authorized in the applicable Terms and to advise Nokia promptly of any such unauthorized use;
- Not to remove, circumvent, reverse engineer, decrypt, or otherwise alter or interfere with any applicable usage rules or attempt to circumvent digital rights management or copy protection features associated with the Content or any other technologies used to control the access to or use of the Content or its identifying information;
- Not to use any automated systems or means, except for those provided by us, for the selection or downloading of the Content;
- Not to give out your password or otherwise allow other people to access the Content. The restrictions on copying that apply to applicable media also apply to the Content accessed as part of this Service.

---

The Content is owned and/or controlled by Nokia and/or its respective licensors and is protected by intellectual property laws. The third party Content provider is solely responsible for any Content it provides, any warranties to the extent that such warranties have not been disclaimed and for any claims you may have relating to that Content or your use of that Content. However, Nokia may enforce the third party Content license terms against you as a third party beneficiary of those terms. The third party Content providers are third-party beneficiaries under these Terms and may enforce the provisions that directly concern the Content in which they have rights. Nokia may be acting as an agent for third party Content provider in providing the Content to you. Nokia is not a party to the transaction between you and the third party Content provider for such Content.

## **7. Allegations of Copyright Infringement**

You may notify Nokia of copyright infringement on the Service by providing notice (a) by email with "Copyright Notification" in the subject line to [copyright.notices@nokia.com](mailto:copyright.notices@nokia.com), (b) by a document titled "Copyright Notification" mailed to Nokia, Attn: Copyright Agent, 102 Corporate Park Drive, White Plains, NY 10604, USA or (c) via the online form, if available. Your notice must:

1. identify the original copyrighted work you claim is infringed;

2. identify the content on the Service that you claim is infringing the copyrighted work. Please provide enough detail for Nokia to locate the allegedly infringing content on the Service;

3. provide your contact information, including your full name, mailing address, telephone number, and email address, if available;

4. provide a statement that you have a good faith belief that the use of the content in the manner complained of is not authorized by the copyright owner, its agent, or the law;

5. provide this statement: "I swear, under penalty of perjury, that the information in this notification and complaint is accurate and that I am the copyright owner, or am authorized to act on behalf of the copyright owner of an exclusive right that is infringed.";

6. provide your signature, as applicable.

## **8. Notices**

Nokia may post notices within the Service. Nokia may also send you notices about products and Services to the email address or telephone number you have provided to us. You are deemed to have received such notices at the latest within seven (7) days from Nokia sending or posting those. Your continued use of the Services constitutes your receipt of all notices regardless of delivery method.

---

## 9. Fees

Your use of the Service may be or may become subject to charges.

Any fees charged by Nokia will be announced separately in connection with the Service.

Use of the Service may involve transmission of data through your service provider's network. Prices listed within the Service do not include possible data transmission, text message, voice or other service provision charges by your network service provider.

Nokia assumes no responsibility for the payment of any charges of your service providers.

## 10. Order and Payment Terms

"Order" shall mean the selection of payable Content and/or subscription to Content offered by Nokia and available in the Service and submission of payment method, as well as submitting the order by selecting the "buy", "ok", "I accept" or other similar confirmation of acceptance in the order flow or providing other indication of acceptance terms that are presented to you in the order flow.

To place an Order within the Service, you must have reached the age of legal competence according to the applicable legislation. If you have not reached the age of legal competence, you may place Orders

only with the prior consent of your parent or legal guardian.

You agree that all Orders shall be legally valid and binding. All Orders are subject to acceptance by Nokia.

You may pay by credit or debit card, network service provider billing, or other payment methods if available.

Your credit or debit card must have a billing address in the country where the Content is offered by the Service. Nokia will charge your credit card or debit your bank account within a reasonable time after you have made your Order. All credit card payments are subject to validation checks and authorization by the card issuer.

If you choose network service provider billing, charges will appear on your mobile phone bill or be deducted from your prepaid account if it is a prepaid account. Some network service providers may subject your usage of the Service to additional terms and conditions including placing limits on the amount of charges possible with network service provider billing. Charges in excess of network service provider limits or account balance may be rejected.

You agree to pay the charges related to your Order, to ensure that the instrument of payment is valid at the time of the Order, that you are the rightful holder of the instrument and that the instrument is used within its credit limits.

---

The Content that is delivered is licensed to you. You agree to use such Content solely as permitted in these Terms and in any additional terms that you may be presented in the order flow.

The Service may offer subscriptions. You authorize the Service to place a periodical charge during the period of the subscription. The Service may also offer a trial period. If your Order involves a trial period (also known as try-and-buy), you may be charged when the trial period expires, unless you cancel in accordance with the subscription/trial terms.

The prices in the Service may change from time to time. Prices include applicable taxes in effect at the time of your transaction, unless otherwise stated. There may be instances where you incur additional charges from your bank or credit card provider based on currency conversion rates used and/or additional fees assessed. Nokia assumes no responsibility for the payment of bank or any other third party service fees or charges.

## **11. Cancellations and Refunds**

You agree to the electronic delivery of Content being initiated concurrently with the placement of your Order. You will not be able to cancel your Order once it has been processed. The nature of the Content is such that it cannot be returned.

In the event that after your Order you discover and promptly inform Nokia within

48 hours that (a) the Content you have ordered is faulty; (b) the Content Nokia delivers to you does not match the description of the Content you ordered via the Service; or (c) technical problems delayed or prevented delivery of your Content or accidental multiple orders caused by such technical problems, your sole and exclusive remedy with respect to such Content will be either replacement of such Content, or refund of the price paid for such Content, as determined solely by Nokia. Otherwise, no refunds are available. If you encounter any of the above issues, please contact Nokia Customer Support.

Please note that Nokia may not be able to process your customer support request if you are unable to provide your transaction ID, which is provided to you by Nokia following your Order from the Service. Nokia may only process refunds for Content where the total price is above the monetary limit stipulated in applicable local legislation.

## **12. Feedback to Nokia**

By submitting any ideas, feedback and/or proposals ("Feedback") to Nokia through the Service or other means, you acknowledge and agree that: (1) Nokia may have similar development ideas to the Feedback; (2) your Feedback does not contain confidential or proprietary information of you or any third party; (3) Nokia is not under any obligation of confidentiality with respect to the Feedback; (4) Nokia may freely use, distribute, exploit and further develop and modify Feedback for

---

any purpose; and (5) you are not entitled to any compensation of any kind from Nokia.

### **13. Social Activities and Location Sharing**

You may use features in the Service to share your location, status, content, Materials or personal information or to interact with other users, sites and services. By using these features you agree that Nokia may use and provide that information to other services and persons with whom you choose to interact or share this information. Users of these services and persons, such as your contacts, may see your location, status and/or personal information. In using these features you agree not to share information, Content or Material or to link to any service or site that: (a) contains content or other material that is illegal or inappropriate; or (b) exploits intellectual property rights without authorization or encourages users to piracy. Any interaction does not involve Nokia and is solely between you and the other user(s).

### **14. Availability and Technical Requirements**

The availability of Content and the Service may vary and is subject to Nokia's sole discretion. Nokia expressly disclaims any representation or warranty that any particular Content or Service will be available. The Service may not be available in all countries and may be provided only in selected languages. The Service, operations and some features may also be dependent on the network, compatibility of the devices used and the content formats supported.

To access the Service, you may need to download a specific piece of software developed by Nokia or by another party.

Nokia may, in its sole discretion, change, correct or discontinue the Service in whole or in part. The Service may not be available during maintenance breaks and other times. To ensure you have the latest Nokia device software and applications, your device may automatically check for the availability of software updates from Nokia. If any are detected you will be prompted to approve the installation. You may disable automatic checking for updates through settings in your device. You may also install software through available software update channels. If Nokia considers a Software update to be important or critical you may not continue using the previous version of the Software. Nokia may prevent your use of the previous version of the Software or Service until you install the update.

Nokia may disable any Content or Software contained in your Service account for any reason and remove any Content or Software and/or disable copies of any application on your device in order to protect the Service, application providers, wireless carriers over whose network you access the service or any other affected or potentially affected parties.

A particular service may be a pre-release version, for example a beta release, and may not work in the way a final version works. Nokia may significantly change any version of

---

Service or Software or decide not to release a final version.

## **15. Links to Third Party Sites and Content**

Nokia may include access to sites and services on the Internet or preloaded clients that enable you to interact with sites and services that are owned or operated by third parties and that are not part of the Service. You must review and agree to the terms and conditions of these sites or services before using these sites or services.

Nokia has no control over the third party content, sites or services and assumes no responsibility for services provided or material created or published on these third-party sites or services. A link to a third-party site does not imply that Nokia endorses the site or the products or services referenced in the site.

In addition, you and other users may create content and links to content within the Service that has not otherwise been submitted to the Service. Nokia is not responsible for this type of content or links.

## **16. Advertisements**

Service may include advertisements. Advertisements may be targeted to the content or information stored on the Service, queries made through the Service, or other information.

## **17. Personal Data**

The Privacy Policy and any additional privacy information made available to you govern the use of your personal data.

## **18. Limitation of Liability**

The Service is provided on “AS IS” and “AS AVAILABLE” basis. Nokia does not warrant that the Service will be uninterrupted or error or virus-free. No warranty of any kind, either express or implied, including but not limited to warranties of title, non-infringement, merchantability, or fitness for a particular purpose, is made in relation to the availability, accuracy, reliability, information or content of the Service. You expressly agree and acknowledge that the use of the Service is at your sole risk and that you may be exposed to content from various sources.

Except for liability for death or personal injury caused by its gross negligence or intentional misconduct, Nokia is not liable for any direct damages caused by your use or inability to use the Service. In no case will Nokia be liable for any indirect, incidental, punitive or consequential damages resulting from your use or inability to use the Service.

## **19. Indemnification**

You agree to defend and indemnify Nokia from and against all third party claims and all liabilities, assessments, losses, costs or damages resulting from or arising out of (i) your breach of the Terms, (ii) your infringement or violation of any intellectual property rights, other rights or privacy of a

---

third party, or (iii) misuse of the Service by a third party where the misuse was made possible by your failure to take reasonable measures to protect your username and password against misuse.

## **20. Miscellaneous**

### **20.1 Choice of Law**

The Terms are governed by the laws of Finland without regard to its conflicts of law provisions.

### **20.2 Validity**

The Terms neither exclude nor limit any of your mandatory rights in your country of residence that cannot by law be waived. If a provision of the Terms is found to be invalid, the remaining provisions will not be affected and the invalid provision will be replaced with a valid provision that comes closest to the result and purpose of the Terms. In the event one or more provisions of these Terms are not relevant to your use of the Service, it shall not impact the validity or enforceability of any other provision of the Terms or the Terms as a whole. If there is any conflict between these Nokia Service Terms and the Privacy Policy, the provisions of these Nokia Service Terms prevail. The provisions of the Terms that are intended to survive termination of your registration remain valid after termination.

### **20.3 Changes in Terms**

Nokia may modify the Terms at any time without prior notice. If the Terms are changed in a material, adverse way, Nokia will provide a separate notice advising of the change.

You are responsible for regularly reviewing the Terms. Your continued use of the Service constitutes your consent to any changes and modification.

## **21. Intellectual Property**

The Service, Content and Software are protected under international copyright laws. Nokia claims copyrights in its Service, Content, and Software to the maximum extent of the law. Subject to the Terms, Nokia retains all right, title and interest in the Service, its Content, the Software and in all other Nokia products, software and other properties provided to you or used by you through the Service.

## **22. Assignment**

Nokia may assign its rights and obligations under these Terms to its corporate parent, its subsidiaries, or to any company under common control with Nokia. Additionally, Nokia may assign its rights and obligations under these Terms to a third party in connection with a merger, acquisition, sale of assets, by operation of law or otherwise.

## **WE CARE ABOUT YOUR PRIVACY**

Nokia is committed to protecting your privacy and to complying with applicable data

---

protection and privacy laws. This Privacy Policy ("Policy") explains how we process personal data. Throughout this Policy the term "personal data" means information relating to an identified or identifiable individual (i.e. a natural person). "Nokia" refers to Nokia Corporation, including its affiliates (also referred to as "we", "us", or "our"). This Policy applies for processing of your personal data where Nokia is the data controller or where we refer to the applicability of this Policy.

We may provide additional privacy information in connection with our products and services through service descriptions and other notices. Such information prevails over this Policy to the extent of any conflict.

Third party services installed on your device may allow access to information available on your device. Our products or services may contain links to other companies' websites and services that have privacy policies of their own. We recommend that you read the privacy policies of such third party services. Nokia is not responsible for the privacy practices or contents of any such third party services.

**By using this website and/or by submitting personal data to Nokia, you agree to the processing of your personal data as explained in this Policy. If you do not agree with this Policy, please do not use this website or provide Nokia with your personal data.**

## **What Data Do We Collect?**

We collect your personal data typically when you make a purchase, use or register into our products and services, take part in a campaign or otherwise interact with us. Below are examples of the categories of data we collect.

- **Your use of our products and services**

When you use our products and services your IP-address, access times, the website you linked from, pages you visit, the links you use, the content you viewed and other such information your browser provides us with is automatically collected by Nokia. Some of our mobile services may collect your unique mobile device identifiers, subscriber identity information, network service provider specific identifiers, network settings and other such information. When you use our products and services or otherwise interact with us over telecommunications networks, certain additional information, such as your mobile subscription number, may be transmitted to us by your mobile network provider.

- **Information you provide us with** We may ask you to provide us with information such as your name, email address, street address, user names and passwords, your consents, preferences and feedback, information relating to your devices, age, gender, postal code and language preferences. Please note that certain non-identifiable information collected from you may become personally identifiable when you provide us with your personal data. We may also obtain, in accordance with applicable law, some personal data from list-rental companies and



---

other such publicly available sources. Some of our services may allow you to submit information about other people, for example, if you make an order for a product that you wish us to send directly to another recipient.

- **Your transactions with us** We collect information relating to your purchase and use of our products and services and your other interactions with us. Such information may include details of the queries or requests you have made, the products and services provided, delivery details, bank account number, credit card details, billing address, credit checks and other such financial information, details of agreements between you and Nokia, records of contacts and communications, information and details relating to the content you have provided us with and other such transactional information. We may, in accordance with applicable law, record your communication with our customer care or with other such contact points.

- **Location data** Nokia's location based services and features may use satellite, Wi-Fi or other network based location data, for example your IP-address. Assisted positioning methods of the device, for example Assisted GPS, provide you with faster and more accurate location data. Use of assisted positioning methods may involve exchanging your location data, wireless network identifiers along with your unique device or network service provider identifiers with a location server. Nokia processes this information anonymously. Depending on your positioning settings and your use of location services of other service providers

your device may connect to other service providers' servers, which are not controlled or operated by Nokia. We recommend you to check the privacy policies of such service providers to understand how they process your location data. You can modify the positioning settings of your device from the device settings, for example change or disable positioning methods or location servers or modify the accuracy of your location data.

Nokia offers various location based services and features that may require the use of your location data. For example when you make a location based search, use location enhanced weather features or request for map data, your location data may be sent to Nokia to serve you with the right content. This may also include location based advertising. Some location based services may allow you to associate your personal data with your location. To learn more about available location based services and features, please refer to instructions and other support material for our products and services.

### **Why Do We Process Personal Data?**

Nokia may process your personal data for the following purposes. Please note that one or more purposes may apply simultaneously.

- **Providing products and services** We may use your personal data to provide you with our products and services, to process your order or as otherwise may be necessary to perform the contract between you and

---

Nokia, to ensure the functionality and security of our products and services, to identify you as well as to prevent and investigate fraud and other misuses.

- **Developing products and services** We may use your personal data to develop our products and services. However, for the most part we only use aggregate and statistical information for such purposes. We may combine personal data collected in connection with your use of a particular Nokia product and/or service with other personal data we may hold about you, unless such personal data was collected for a different purpose.
- **Communicating with you** We may use your personal data to communicate with you, for example to send you critical alerts and other such notices relating to our products and/or services and to contact you for consumer care related purposes.

#### **Marketing and making recommendations**

We may use your personal data to personalize our offering and to provide you with more relevant services, for example, to make recommendations and to display customized content and advertising in our services. This may include displaying Nokia and third party content. We may use your personal data for direct marketing or research purposes, for example, to conduct market research and we may, in accordance with applicable law, contact you to inform you of new products, services or promotions we may offer.

#### **First use of your Nokia device**

Depending on your device a Nokia Account may be created for you or you may need to sign in with your existing Nokia Account when you first use your device. In the activation process your user name, email address, mobile number, unique mobile device identifier and subscriber identity information will be sent to Nokia and we may associate this information with your Nokia Account. This combined information may be used to activate your warranty and certain software licenses and to send you personalized messages, for example emails, text and other messages. These messages may include information about Nokia's products and services, such as tips and commercial offers. You may unsubscribe from these messages at any time for example by following the information in the message you receive after taking your device into use, instructions in the device or in the messages, through available profile management tools or contacting Nokia customer care. The collected information may also be used to display personalized content as well as to improve Nokia's products and services. The above information may also apply in case you update the software of your device.

#### **Do We Share Personal Data?**

We do not sell, lease, rent or otherwise disclose your personal data to third parties unless otherwise stated below.

- **Your consent and social sharing services** We may share your personal data if we have your consent to do so. Some

---

services may allow you to share your personal data with other users of the service or with other services and their users. Please consider carefully before disclosing any personal data or other information that might be accessible to other users.

- **Nokia companies and authorized third parties** We may share your personal data with other Nokia companies or authorized third parties who process personal data for Nokia for the purposes described in this Policy. This may include for example billing through your network service provider or otherwise, delivery of your purchases, providing services including customer service, managing and analyzing consumer data, credit checks, conducting market research and managing marketing and other such campaigns. When you purchase a Nokia product from us with a network service provider plan, we may need to exchange information with your network service provider to provide you with such service.

We may conduct joint marketing and other communications with our partners, for example your mobile operator. To avoid duplicate or unnecessary communications and to tailor the message to you we may need to match information that Nokia has collected with information that the partner has collected where this is permitted by law.

These authorized third parties are not permitted to use your personal data for any other purposes. We require them to act consistently with this Policy and to use

appropriate security measures to protect your personal data.

- **International transfers of personal data**

Our products and services may be provided using resources and servers located in various countries around the world.

Therefore your personal data may be transferred across international borders outside the country where you use our services, including to countries outside the European Economic Area (EEA) that do not have laws providing specific protection for personal data or that have different legal rules on data protection, for example, the United States of America. In such cases we take steps to ensure that there is a legal basis for such a transfer and that adequate protection for your personal data is provided as required by applicable law, for example, by using standard agreements approved by relevant authorities (where necessary) and by requiring the use of other appropriate technical and organizational information security measures.

- **Mandatory disclosures** We may be obligated by mandatory law to disclose your personal data to certain authorities or other third parties, for example, to law enforcement agencies in the countries where we or third parties acting on our behalf operate. We may also disclose and otherwise process your personal data in accordance with applicable law to defend Nokia's legitimate interests, for example, in civil or criminal legal proceedings.

- **Mergers and Acquisitions** If we decide to sell, buy, merge or otherwise reorganize our businesses in certain countries, this may involve us disclosing personal data to

---

prospective or actual purchasers and their advisers, or receiving personal data from sellers and their advisers.

### **How Do We Address The Privacy of Children?**

Nokia products and services are typically intended for general audiences. Nokia does not knowingly collect information of children without the consent of their parents or guardians. Nokia publishes safety guidelines for using internet services in our websites.

### **How Do We Address Data Quality?**

We take reasonable steps to keep the personal data we possess accurate and to delete incorrect or un-necessary personal data.

As certain Nokia products and services may allow you to manage your profile, we encourage you to access your personal data from time to time to ensure that it is correct. Please remember that in case of any changes it is your responsibility to update the personal data you have provided us with.

### **What Steps Are Taken To Safeguard Personal Data?**

Privacy and security are key considerations in the creation and delivery of our products and services. We have assigned specific responsibilities to address privacy and security related matters. We enforce our

internal policies and guidelines through an appropriate selection of activities, including proactive and reactive risk management, security engineering, training and assessments. We take appropriate steps to address online security, physical security, risk of data loss and other such risks taking into consideration the risk represented by the processing and the nature of the data being protected. Also, we limit access to our data bases containing personal data to authorized persons having a justified need to access such information.

### **How Do We Use Cookies and Web Beacons?**

Cookies are small text files that are sent to your computer by a web server. We use cookies to provide benefits to you. Session cookies remember the previous activity performed by you, for example an item you placed in a shopping cart. Persistent cookies are used to save your preferences over multiple sessions, for example personalization of settings on our websites. Cookies may be used to display targeted ads and recommendations, for example to eliminate showing the same ads to you multiple times or showing ads that we think are of interest to you based on your past actions on our website. Cookies are also used to determine the effectiveness of our promotions and advertising campaigns and to improve our products and services.

Nokia may use web beacons (or “pixel tags”) in connection with some of our websites. However, we do not use them to identify

---

individual users personally. Web beacons are typically graphic images that are placed on a website and they are used to count visitors to a website and/or to access certain cookies. This information is used to improve our services. Web beacons do not typically collect any other information than what your browser provides us with as a standard part of any internet communication. If you turn off cookies, the web beacon will no longer be able to track your specific activity. The web beacon may, however, continue to collect information about visits from your IP-address.

Some Nokia websites or applications may utilize so called locally stored objects, such as Flash local shared objects ("Flash cookies") or HTML5 Web Storage. Locally stored objects are used for similar purposes as cookies but typically may contain a greater amount and different types of data than browser cookies. For example, in Flash you can use the Flash Player Settings Manager to control the storage of local shared objects, including disabling the local shared objects for certain websites only or disabling the storage of local shared objects completely for all websites.

Some Nokia websites use third party advertising technologies, such as DoubleClick, to serve ads. DoubleClick uses a cookie to collect information about your visits to Nokia and third party websites. This information will be used to serve ads on Nokia and third party websites. The collected information will not be directly personally

identifiable nor will DoubleClick share the information with third parties. You may choose to disable the DoubleClick cookie at any time by using DoubleClick opt-out cookie. You may also go to <http://networkadvertising.org/> to install an opt-out cookie.

Most browsers allow you to disable or allow the use of cookies. You may also delete the cookies on your computer if your browser so permits. If you disable cookies, you may not be able to use certain parts of our services and you may need to re-install the opt-out cookie.

### **What Are Your Rights?**

You have a right to know what personal data we hold about you. You have a right to have incomplete, incorrect, unnecessary or outdated personal data deleted or updated. You have a right to request that we stop processing your personal data for direct marketing or market research purposes. However, if you opt-out from marketing and other communications from Nokia, we may still send you critical alerts pertaining to our products and services or contact you for these purposes.

You may exercise your rights by contacting us through the contact points referred to below. In some cases, especially if you wish us to delete or stop processing your personal data, this may also mean that we may not be able to continue to provide the services to you. Please note that Nokia may need to

---

identify you and to ask for additional information in order to be able to fulfill your request. Please also note that applicable law may contain restrictions and other provisions that relate to your rights.

We encourage you to use available profile management tools, for example Nokia Account for the above purposes as such tools often provide you with direct access to your personal data and allow you to effectively manage it.

#### **Who Is The Controller of Your Personal Data?**

Nokia Corporation of Keilalahdentie 4, 02150 Espoo, Finland is the controller of your personal data.

In addition, the Nokia affiliate providing the product or service may be a controller of your personal data. You may find the identity of the controller and its contact details by reviewing the terms and conditions of such a product or service or by using contact information provided in the applicable Nokia websites.

In matters pertaining to Nokia's privacy practices you may also contact us at:

Nokia Corporation

c/o Privacy

Keilalahdentie 4

02150 Espoo, Finland

#### **US Safe Harbor Privacy Framework**

Nokia Inc., 102 Corporate Park Drive, White Plains, NY 10604 USA adheres to the EU-US/ Swiss-US Safe Harbor Privacy Principles of Notice, Choice, Onward Transfer, Security, Data Integrity, Access and Enforcement, and is registered with the U.S. Department of Commerce's Safe Harbor Program. If you have questions or concerns about Nokia's participation in the Safe Harbor Framework, please contact:

Nokia Inc.,

102 Corporate Park Drive,

White Plains, NY 10604 USA.

Attention: Legal Director, North America.

If you believe Nokia Inc. has not satisfactorily addressed your data privacy concerns, you may contact the EU Data Protection Panel at: Data Protection Panel Secretariat, Rue de Luxembourg 46 (01/126) B-1000 Brussels, BELGIUM, or by visiting <http://circa.europa.eu/Public/irc/secureida/safeharbor/home>.

#### **Changes to This Privacy Policy**

Nokia may from time to time change this Policy or change, modify or withdraw access to this site at any time with or without notice.

However, if this Policy is changed in a material, adverse way, Nokia will post a notice advising of such change at the beginning of this Policy and on this site's home page for 30 days. We recommend that you re-visit this Policy from time to time to learn of any such changes to this Policy.

## DECLARATION OF CONFORMITY

# CE 0168

Hereby, NOKIA CORPORATION declares that this RM-863 product is in compliance with the essential requirements and other relevant provisions of Directive 1999/5/EC. A copy of the Declaration of Conformity can be found at <http://www.nokia.com/global/declaration/declaration-of-conformity>.

© 2012 Nokia. All rights reserved.

Nokia, Nokia Connecting People are trademarks or registered trademarks of Nokia Corporation. Nokia tune is a sound mark of Nokia Corporation. Other product and company names mentioned herein may be trademarks or tradenames of their respective owners.

Reproduction, transfer, distribution, or storage of part or all of the contents in this document in any form without the prior written permission of Nokia is prohibited. Nokia operates a policy of continuous development. Nokia reserves the right to make changes and improvements to any of

the products described in this document without prior notice.



Includes RSA BSAFE cryptographic or security protocol software from RSA Security.



**Java**  
**POWERED** Java and all Java-based marks are trademarks or registered trademarks of Sun Microsystems, Inc.

The Bluetooth word mark and logos are owned by the Bluetooth SIG, Inc. and any use of such marks by Nokia is under license.

This product is licensed under the MPEG-4 Visual Patent Portfolio License (i) for personal and noncommercial use in connection with information which has been encoded in compliance with the MPEG-4 Visual Standard by a consumer engaged in a personal and noncommercial activity and (ii) for use in connection with MPEG-4 video provided by a licensed video provider. No license is granted or shall be implied for any other use. Additional information, including that related to promotional, internal, and commercial uses, may be obtained from MPEG LA, LLC. See <http://www.mpegla.com>.

---

To the maximum extent permitted by applicable law, under no circumstances shall Nokia or any of its licensors be responsible for any loss of data or income or any special, incidental, consequential or indirect damages howsoever caused.

The availability of Nokia services may vary by region.

The contents of this document are provided "as is". Except as required by applicable law, no warranties of any kind, either express or implied, including, but not limited to, the implied warranties of merchantability and fitness for a particular purpose, are made in relation to the accuracy, reliability or contents of this document. Nokia reserves the right to revise this document or withdraw it at any time without prior notice.

The availability of products, features, apps, and services may vary by region. For more info, contact your Nokia dealer or your service provider. This device may contain commodities, technology or software subject to export laws and regulations from the US and other countries. Diversion contrary to law is prohibited.

Nokia does not provide a warranty for or take any responsibility for the functionality, content, or end-user support of third-party apps provided with your device. By using an app, you acknowledge that the app is provided as is. Nokia does not make any representations, provide a warranty, or take any responsibility for the functionality, content, or end-user support of third-party apps provided with your device.