

Nokia USB Modem

Contents

About your USB modem 3

Get started 3

Parts	3
-------	---

Insert the SIM card	4
---------------------	---

Insert a memory card	4
----------------------	---

Install the connection manager	6
--------------------------------	---

Uninstall from your computer	6
------------------------------	---

Internet connection 6

Connect to the internet	6
-------------------------	---


Indicator lights	7
------------------	---

Product and safety information 7

About your USB modem

The Nokia USB modem is a wireless modem, used to connect to the internet in cellular or wireless networks.

To connect to the internet, you need to install the connection manager application on your computer.

Before using your USB modem, familiarise yourself with the user guide for the connection manager application, your computer, operating system, and any software that you use with the internet connection set up through the device. To read the user guide for the connection manager application, in the main view, select . The user guide is displayed in the language you selected during the installation of the application.

The operating temperature of this device is -15°C to 35°C (5°F to 95°F), and the storage temperature is -40°C to 85°C (-40°F to 185°F).

The USB feature supports the data transfer rates defined in the USB specification version 2.0.

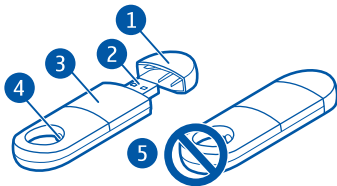
Warning:

This product may contain small parts. Keep them out of the reach of small children.

The surface of this product is nickel-free.

Get started

Parts



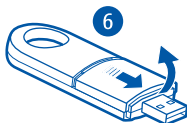
- 1 Cap
- 2 USB connector
- 3 SIM and memory card cover
- 4 Indicator light
- 5 Antenna

Avoid touching the antenna area while the antenna is in use. Contact with antennas affects the communication quality and may reduce battery life due to higher power level during operation.

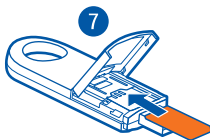
Do not attach any straps, key rings, or neck straps to the ring at the end of the USB modem.

Insert the SIM card

- 1 Remove the cap.
- 2 Slide the cover, and lift it up (6).



- 3 Make sure the contact surface on the card is facing down, and the missing corner is at the bottom right, and insert the SIM card (7).



- 4 Lower the cover, and slide it into place (9).



Insert a memory card

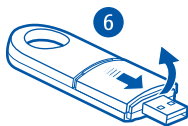
The device includes a microSD memory card reader that you can use to save files to your compatible memory card. The memory card is shown as a removable disk in your operating system.

Keep all memory cards out of the reach of small children.

Use only compatible memory cards approved by Nokia for use with this device. Incompatible cards may damage the card and the device and corrupt data stored on the card.



- 1 Remove the cap.
- 2 Slide the cover, and lift it up (6).



- 3 Make sure the contact area of the memory card is facing up, and insert the card into the slot which is underneath the SIM card slot. Push the card in, until it locks into place (8).



- 4 Lower the cover and slide it into place (9).



Remove the memory card

Remove the cover, press the card in gently, until it is released, and pull the card out.

! **Important:** Do not remove the memory card when an application is using it. Doing so may damage the memory card and the device and corrupt data stored on the card.

Install the connection manager

You may need administrator rights for the operating system, and you may also need to set your operating system firewall to allow the device to access the internet.

- 1 Remove the cap.
- 2 Make sure the SIM card is inserted in the device.
- 3 Switch your computer on, and connect the device to the USB port in the computer.
- 4 If the installation doesn't start automatically, use your computer's file browser to locate the USB modem drive, and select the setup file on your device.
The installation may take several minutes.
- 5 If prompted, enter the PIN code of your SIM card. The PIN code helps to protect your SIM card against unauthorised use and is usually supplied with the card.

Disconnect the device

Disconnect the device from the USB port. You may need to stop the device before disconnecting it, if this is required by your operating system.


Uninstall from your computer

- In Windows, select the uninstall application from the Start menu.
- In Mac OS, select the uninstall icon in the application folder.
- In Linux, use the package manager.


Internet connection

Connect to the internet

For the availability of data services, pricing, and tariffs, contact your service provider.

- 1 Connect the device to the computer.
- 2 If the connection manager application does not open automatically:
 - In Windows, select the application from the desktop or Start menu.
 - In Mac OS, select the application from the Finder.
 - In Linux, select **Applications** > **Internet** and the application.
- 3 If prompted, enter the PIN code of your SIM card.
- 4 Check the network indicator light to see if a network connection is available.
- 5 To connect to the internet through a cellular network, select .

If your product has the Wi-Fi feature, to use a Wi-Fi network, select **Network list** and the desired network. The indicator beside the network name displays the signal strength of the network. If a padlock is displayed beside the name, the network is protected and you need to enter a password.

- 6 Use the internet as normal.
- 7 To close the connection, in the Internet connection window, select . The connection also closes if you close the connection manager application.

! **Note:** Using Wi-Fi may be restricted in some countries. For example, in France, you are only allowed to use Wi-Fi indoors. For more information, contact your local authorities.

Tip: While browsing the web, you can check the duration and amount of data sent and received in the Internet connection window.

If the computer enters standby or hibernation mode, data transfer may stop. Transferring data increases the demand on computer battery power and reduces the battery life.

Indicator lights

Light	Status
Red light	The device can't connect because the SIM card is not valid or properly inserted, or a supported network is not available.
Flashing red light	The device can't connect because you have not entered the PIN code or flight mode is activated.
Green light	You are connected to a GSM network and transferring data.
Flashing green light	You are connected, but not transferring data.
Blue light	You are connected to a 3G network and transferring data.
Flashing blue light	You are connected, but not transferring data.

Product and safety information

Network services and costs

To use the device, you need a subscription with a service provider.

Using network services requires a network connection and may result in data traffic costs. Some product features require support from the network, and you may need to subscribe to them.

Take care of your device

Handle your device with care. The following suggestions help you protect your warranty coverage.

- Keep the device dry. Precipitation, humidity, and all types of liquids or moisture can contain minerals that corrode electronic circuits.
- Do not store the device in cold temperatures.
- Do not attempt to open the device.
- Unauthorised modifications may damage the device and violate regulations governing radio devices.
- Do not drop, knock, or shake the device.
- Only use a soft, clean, dry cloth to clean the surface of the device.

During extended operation, the device may feel warm. In most cases, this is normal. If you suspect the device is not working properly, take it to the nearest authorised service facility.

Recycle

Always return your used electronic products, batteries, and packaging materials to dedicated collection points. This way you help prevent uncontrolled waste disposal and promote the recycling of materials. Check how to recycle your Nokia products at www.nokia.com/werecycle.

Crossed-out wheeled-bin symbol



The crossed-out wheeled-bin symbol on your product, battery, literature, or packaging reminds you that all electrical and electronic products, batteries, and accumulators must be taken to separate collection at the end of their working life. This requirement applies in the European Union. Do not dispose of these products as unsorted municipal waste. For more environmental information, see the product Eco profile at www.nokia.com/ecoprofile.

Additional safety information

This product may contain small parts. Keep them out of the reach of small children.

Medical devices

Operation of radio transmitting equipment, including wireless phones, may interfere with the function of inadequately protected medical devices. Consult a physician or the manufacturer of the medical device to determine whether they are adequately shielded from external radio frequency energy.

Implanted medical devices

Manufacturers of medical devices recommend a minimum separation of 15.3 centimetres (6 inches) between a wireless device and an implanted medical device, such as a pacemaker or implanted cardioverter defibrillator, to avoid potential interference with the medical device. Persons who have such devices should:

- Always keep the wireless device more than 15.3 centimetres (6 inches) from the medical device.
- Turn the wireless device off if there is any reason to suspect that interference is taking place.
- Follow the manufacturer directions for the implanted medical device.

If you have any questions about using your wireless device with an implanted medical device, consult your health care provider.

Hearing

Some wireless devices may interfere with some hearing aids.

Operating environment

This device model has been tested and meets RF exposure guidelines when positioned at least 0.5 centimetre (1/5 inch) away from the body when plugged directly into a USB port on the host device or used at the end of a connectivity cable that may be supplied in the sales package.

Vehicles

Radio signals may affect improperly installed or inadequately shielded electronic systems in motor vehicles such as electronic fuel injection, electronic antilock braking, electronic speed control, and air bag systems. For more information, check with the manufacturer of your vehicle or its equipment.

Do not store or carry flammable liquids, gases, or explosive materials in the same compartment as the device, its parts, or accessories. Remember that air bags inflate with great force. Do not place your device or accessories in the air bag deployment area.

Potentially explosive environments

Switch off your device in any area with a potentially explosive atmosphere, for example near gas pumps at service stations. Sparks in such areas could cause an explosion or fire resulting in bodily injury or death. Observe restrictions in fuel service stations, storage, and distribution areas; chemical plants; or where blasting operations are in progress. Areas with a potentially explosive atmosphere are often, but not always, clearly marked. They include areas where you would be advised to turn off your vehicle engine, below deck on boats, chemical transfer or storage facilities and where the air contains chemicals or particles such as grain, dust, or metal powders. You should check with the manufacturers of vehicles using liquefied petroleum gas (such as propane or butane) to determine if this device can be safely used in their vicinity.

Certification information (SAR)

This device model meets guidelines for exposure to radio waves.

Your device is a radio transmitter and receiver. It is designed not to exceed the limits for exposure to radio waves recommended by international guidelines. These guidelines were developed by the independent scientific organisation ICNIRP and include safety margins designed to assure the protection of all persons, regardless of age and health.

The exposure guidelines employ a unit of measurement known as the Specific Absorption Rate or SAR. The SAR limit stated in the ICNIRP guidelines is 2.0 watts/kilogram (W/kg) averaged over ten grams of tissue. Tests for SAR are conducted using standard operating positions with the device transmitting at its highest certified power level in all tested frequency bands. The actual SAR level of an operating device can be below the maximum value because the device is designed to use only the power required to reach the network. That amount changes depending on a number of factors such as how close you are to a network base station.

SAR values may vary depending on national reporting and testing requirements and the network band. Additional SAR information may be provided under product information at www.nokia.com

This device model has been tested and meets RF exposure guidelines when positioned at least 0.5 centimetre (1/5 inch) away from the body when plugged directly into a USB port on the host device or used at the end of a connectivity cable that may be supplied in the sales package.

Copyright and other notices

DECLARATION OF CONFORMITY

Hereby, NOKIA CORPORATION declares that this RD-17 / RD-19 / RD-22 / RD-23 product is in compliance with the essential requirements and other relevant provisions of Directive 1999/5/EC. A copy of the Declaration of Conformity can be found at http://www.nokia.com/phones/declaration_of_conformity/.

CE 0700

© 2011 Nokia. All rights reserved.

Nokia, Nokia Connecting People and Nokia Original Accessories logo are trademarks or registered trademarks of Nokia Corporation. Other product and company names mentioned herein may be trademarks or tradenames of their respective owners.

Reproduction, transfer, distribution, or storage of part or all of the contents in this document in any form without the prior written permission of Nokia is prohibited. Nokia operates a policy of continuous development. Nokia reserves the right to make changes and improvements to any of the products described in this document without prior notice.

To the maximum extent permitted by applicable law, under no circumstances shall Nokia or any of its licensors be responsible for any loss of data or income or any special, incidental, consequential or indirect damages howsoever caused.

The contents of this document are provided "as is". Except as required by applicable law, no warranties of any kind, either express or implied, including, but not limited to, the implied warranties of merchantability and fitness for a particular purpose, are made in relation to the accuracy, reliability or contents of this document. Nokia reserves the right to revise this document or withdraw it at any time without prior notice.

The availability of products, features, applications and services may vary by region. For more information, contact your Nokia dealer or your service provider. This device may contain commodities, technology or software subject to export laws and regulations from the US and other countries. Diversion contrary to law is prohibited.

/Issue 1.1 EN