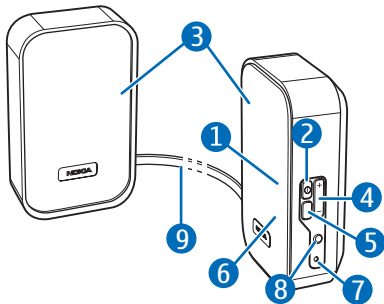


Nokia Bluetooth Speakers MD-7W



DECLARATION OF CONFORMITY

Hereby, NOKIA CORPORATION declares that this MD-7W product is in compliance with the essential requirements and other relevant provisions of Directive 1999/5/EC. A copy of the Declaration of Conformity can be found at http://www.nokia.com/phones/declaration_of_conformity/.

CE 0499

© 2007 Nokia. All rights reserved.

Nokia and Nokia Connecting People are registered trademarks of Nokia Corporation. Other product and company names mentioned herein may be trademarks or tradenames of their respective owners.

Reproduction, transfer, distribution, or storage of part or all of the contents in this document in any form without the prior written permission of Nokia is prohibited.

Bluetooth is a registered trademark of Bluetooth SIG, Inc.

Nokia operates a policy of ongoing development. Nokia reserves the right to make changes and improvements to any of

the products described in this document without prior notice.

To the maximum extent permitted by applicable law, under no circumstances shall Nokia or any of its licensors be responsible for any loss of data or income or any special, incidental, consequential or indirect damages howsoever caused.

The contents of this document are provided "as is". Except as required by applicable law, no warranties of any kind, either express or implied, including, but not limited to, the implied warranties of merchantability and fitness for a particular purpose, are made in relation to the accuracy, reliability or contents of this document. Nokia reserves the right to revise this document or withdraw it at any time without prior notice.

The availability of particular products may vary by region. Please check with your Nokia dealer for details.

Unauthorized changes or modifications to this device may void the user's authority to operate the equipment.

Export Controls

This device may contain commodities, technology or software subject to export

laws and regulations from the US and other countries. Diversion contrary to law is prohibited.

Introduction

Congratulations on your purchase. With Nokia Bluetooth Speakers MD-7W, you can listen to music from your compatible mobile or music device and enjoy the high-quality audio.

You can connect the speakers to a compatible device using Bluetooth wireless technology or the supplied cable. The cable also serves as an FM radio antenna that you can use with the FM radio of your music device (if it has one).

Read this user guide carefully before using the speakers. Also read the user guide for the device that you connect to the speakers, which provides important safety and maintenance

information. Keep all accessories and enhancements out of the reach of small children.

Bluetooth wireless technology

Bluetooth wireless technology allows you to connect compatible devices without cables. A Bluetooth connection does not require that the speakers and the other device be in line of sight, but both devices should be within 10 meters (33 feet) of each other. Connections may be subject to interference from obstructions, such as walls, or other electronic devices.

The speakers comply with the Bluetooth Specification 2.0 + EDR that supports Advanced Audio

Distribution Profile (A2DP) 1.0 and Audio/Video Remote Control Profile (AVRCP) 1.0. Check with the

manufacturers of other devices to determine their compatibility with this device.

Getting started

Parts

The speakers contain the parts shown on the title page: power and Bluetooth indicator light (1), power key (2), speakers (3), volume key (4), stereo widening key (5), indicator light for stereo widening (6), power connector (7), audio connector (8), and speaker connection cord (9).

Parts of the speakers are magnetic. Metallic materials may be attracted to the speakers. Do not place credit cards or other magnetic storage media near the speakers, because information stored on them may be erased.

Chargers

Check the model number of any charger before use with this device. This device is intended for use when supplied with power from the AC-4 charger.



Warning: Use only chargers approved by Nokia for use with this particular device.

The use of any other types may invalidate any approval or warranty and may be dangerous.

When you disconnect the power cord of any enhancement, grasp and pull the plug, not the cord.

Connect to power

The speakers can be powered by the supplied charger or four AA batteries.

Connect to wall outlet

To use the speakers with the charger, connect the charger to a wall outlet, and plug the charger cable to the power connector.

If you use rechargeable batteries with the speakers, the batteries are not charged by the charger.

Install AA batteries

To install the batteries, ensure that the speakers are switched off, and press the release switch of the battery cover at the back of each speaker. Lift the cover.

Place the batteries as indicated in the compartment. To close the cover, insert the catch at the top of the cover into the corresponding slot on the speaker, and push the cover against the speaker until it snaps into place.

During long periods where the speakers are not used, remove the

batteries to prevent damage from battery leakage.

When battery power is low, the orange indicator light starts to flash, and the speakers beep.

Switch the speakers on or off

To switch on, press and hold the power key until the white indicator light turns on.

To switch off, press the power key. The orange indicator light is briefly displayed.

Connect the speakers

You can connect the speakers to a compatible music device (such as a music player or mobile phone with a music player feature) using Bluetooth wireless technology or the supplied cable. To use a Bluetooth connection, the music device must support the A2DP Bluetooth profile.

Pair and connect using Bluetooth wireless technology

The following instructions apply for a mobile phone but the procedure is the same for a music player, except that you may not need to give the Bluetooth passcode.

1. Ensure that the speakers are off and that the phone is on.
2. Press and hold the power key until the white indicator light starts to flash.
3. Activate the Bluetooth feature on the phone, and set it to search for Bluetooth devices.
4. Select the speakers from the list of found devices.
5. Enter the Bluetooth passcode 0000 to pair and connect the speakers to the phone. In some phones you may need to make the connection separately after pairing.

If the pairing is successful and the speakers are in a Bluetooth connection with the music device, the white indicator light flashes about every 4 seconds.

Connect using a cable

You can connect the speakers to a compatible device with the supplied CA-63U cable.

To connect the speakers to a device that has a standard 3.5 mm audio connector, plug the cable into the audio connector on the speakers and the other device.

When the speakers are connected to the other device using the cable, the white indicator is continuously on.

Basic use

Listen to music

When the speakers are connected to a compatible music device, start the music playback on the device.



Warning: Listen to music at a moderate level. Continuous exposure to high volume may damage your hearing.

To widen the stereo image of the sound, check that this feature is off in your music device, and press the stereo widening key. The white indicator light for stereo widening turns on.

Adjust the volume

To set the volume of the speakers, press either volume key. If the sound level of the speakers becomes too low when using battery power, change the batteries.

Carry the speakers

To take the speakers with you, press the speaker elements against each other, and use the speaker connection cord as a carrying strap.

Clear settings

To clear the volume and stereo widening settings, switch off the speakers. Press and hold the power key, stereo widening key, and volume up key at the same time.

Care and maintenance

Your device is a product of superior design and craftsmanship and should be treated with care. The following suggestions will help you protect your warranty coverage.

- Keep the device dry. Precipitation, humidity, and all types of liquids or moisture can contain minerals that will corrode electronic circuits. If your device does get wet, allow it to dry completely.
- Do not use or store the device in dusty, dirty areas. Its moving parts and electronic components can be damaged.
- Do not store the device in hot areas. High temperatures can shorten the life of electronic devices, damage batteries, and warp or melt certain plastics.
- Do not store the device in cold areas. When the device returns to its normal temperature, moisture can form

inside the device and damage electronic circuit boards.

- Do not drop, knock, or shake the device. Rough handling can break internal circuit boards and fine mechanics.
- Do not use harsh chemicals, cleaning solvents, or strong detergents to clean the device.
- Do not paint the device. Paint can clog the moving parts and prevent proper operation.

If the product is not working properly, take it to the nearest authorised service facility for service.



Disposal

The crossed-out wheeled-bin symbol on your product, literature, or packaging reminds you that all electrical and electronic products, batteries, and accumulators must be taken to separate collection at the end of their working life.

This requirement applies to the European Union and other locations where separate collection systems are available. Do not dispose of these products as unsorted municipal waste.

By returning the products to collection you help prevent uncontrolled waste disposal and promote the reuse of material resources. More detailed information is available from the product retailer, local waste authorities, national producer responsibility organizations, or your local Nokia representative. For the product Eco-Declaration or instructions for returning your obsolete product, go to country-specific information at www.nokia.com.