



# **SUPPORT GUIDE FOR THE NOKIA 6510 WITH AN INFRARED DATA CONNECTION IN A POCKET PC DEVICE**

**NOKIA**



# Contents

- 1. INTRODUCTION ..... 1
- 2. SETTING UP A NEW CONNECTION ..... 1
- 3. MAKING A DIAL-UP CONNECTION..... 3
- 4. HANGING UP THE CONNECTION ..... 4

**Legal Notice**

Copyright © Nokia Mobile Phones 2002. All rights reserved.

Reproduction, transfer, distribution or storage of part or all of the contents of this document in any form without the prior written permission of Nokia is prohibited.

Nokia and Nokia Connecting People are registered trademarks of Nokia Corporation. Other product and company names mentioned herein may be trademarks or tradenames of their respective owners.

Nokia operates a policy of continuous development. Nokia reserves the right to make changes and improvements to any of the products described in this document without prior notice.

Under no circumstances shall Nokia be responsible for any loss of data or income or any special, incidental, consequential or indirect damages howsoever caused.

The contents of this document are provided "as is". Except as required by applicable law, no warranties of any kind, either express or implied, including, but not limited to, the implied warranties of merchantability and fitness for a particular purpose, are made in relation to the accuracy, reliability or contents of this document. Nokia reserves the right to revise this document or withdraw it at any time without prior notice.



## 1. INTRODUCTION

How to configure Pocket PC device to function with Nokia 6510 phone as a modem with it

- Pocket PC device and Nokia 6510 phone are the basic requirements
- Data services (at least outgoing data) should be activated in order to be able to make data calls
- Good GSM coverage and a well-charged battery in both devices as the data connection's power consumption is usually quite high.
- When you wish to use GPRS connection please verify from your operator that GPRS is activated on your SIM card and your SIM card supports GPRS
- When you are roaming in other GSM operator's network please verify that they have also GPRS roaming agreement

## 2. SETTING UP A NEW CONNECTION

1. Go to the Start menu and select Settings
2. Select Modem
3. You should now have a list of available connections; just click on the New Connection... option.
4. Complete the settings as shown in the figures below:

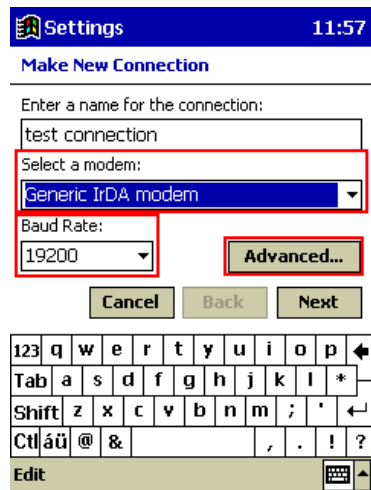


Figure 1. Select a modem and check the Baud Rate (When using HSCSD it recommended to use 1 e 57400). After that tap Advanced...

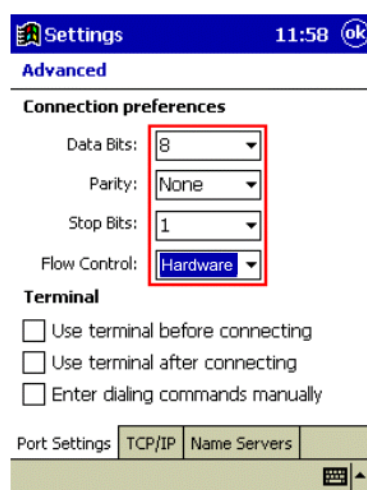


Figure 2. Check Connection preferences. Especially that the Flow Control selected is HW. Tap OK on upper right corner and then tap Next

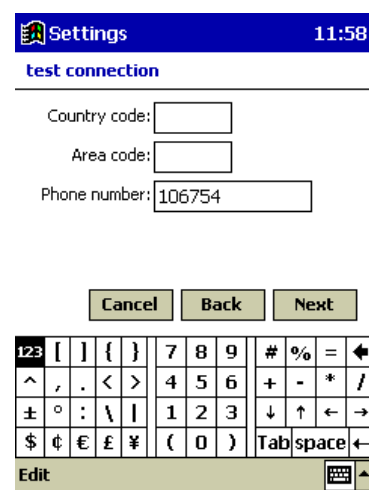


Figure 3. Type in the ISP's phone number (typically in GPRS Connection the ph. number is \*99#, please check from your GSM operator) and then tap Next.

Settings 11:58

test connection

☒ Cancel call if not connected within 120 seconds

☐ Wait for dial tone before dialing

Wait for credit card tone 0 seconds

Extra dial-string modem commands:

Cancel Back Finish

123 [ ] { } 7 8 9 # % = <

^ , . < > 4 5 6 + - \* /

± ° : \ | 1 2 3 ↓ ↑ ← →

\$ ¢ € £ ¥ ( 0 ) Tab space ↵

Edit

Figure 4. Uncheck the Wait for Dial tone before dialling check box and tap Finish.

Settings 12:00 ok

Modem Connections

Location: Home

New... Remove

Local Settings

Area code: 425 Tone dialing

Country code: 1 Pulse dialing

☐ Disable call waiting; dial:

Dialing Patterns...

Connections Dialing

To start a modem connection, go to the [Connections](#) folder.

Edit

Figure 5. Now go to Dialling leaflet and go to Dialling Patterns...

Settings 12:00 ok

Dialling Patterns

For local calls, dial: G

For long distance calls, dial: G

For international calls, dial: G

(E,e = country code; F,f = area code; G,g = number)

123 [ ] { } 7 8 9 # % = <

^ , . < > 4 5 6 + - \* /

± ° : \ | 1 2 3 ↓ ↑ ← →

\$ ¢ € £ ¥ ( 0 ) Tab space ↵

Edit

Figure 6. In some cases you may need to edit these to get the phone number right when dialling.



**Tip:** If you wish to make a HSCSD connection then type the following dial-string in to the Extra dial-string... box:

Extra dial-string modem commands:

+cbst=16,0,1;+chsn=4,3,0,4 (to get 28.8 Kbps modem connection)

+cbst=81,0,1;+chsn=6,3,0,8 (to get 38.4 Kbps ISDN v.110 connection)

+cbst=50,0,1;+chsn=6,3,0,8 (to get 43.2 Kbps ISDN v.120 connection)

\* If you wish to make a GPRS connection then put Access point name either to your phone or put the following AT command to Extra dial-string...box:

+cgdcont=,"xxx" (NOTE! xxx refers to Access Point Name which you will get from your GSM operator)

### 3. MAKING A DIAL-UP CONNECTION

1. Go to the Start menu and select Programs
2. Select Connections
3. You should now have the icons of the available connections; click on the connection you have just created (Figure 7).
4. Fill in your User name and Password and tap Connect (Figure 8)
5. Figures 9 and 10 shows the Status screens of the connection

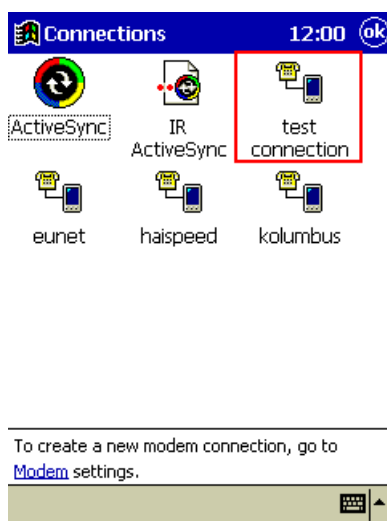


Figure 7.

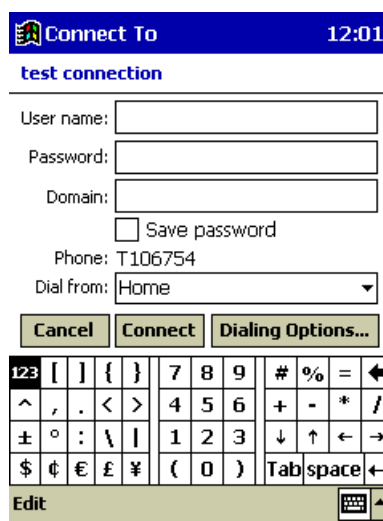


Figure 8.



Figure 9.

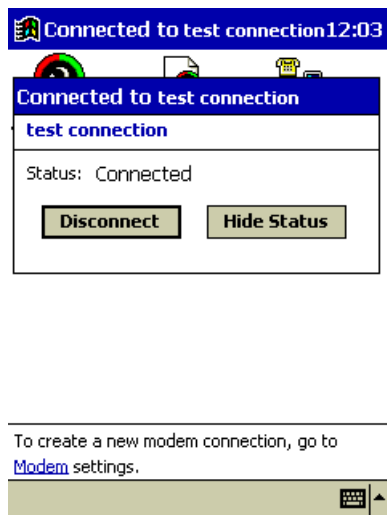


Figure 10.

6. You should now be connected to your ISP, so just start your Internet Explorer or Inbox.

## 4. HANGING UP THE CONNECTION

---

1. Go to the Start menu and select Today
2. Tap the connection icon in the lower right corner and
3. Select Disconnect (Figure 10).

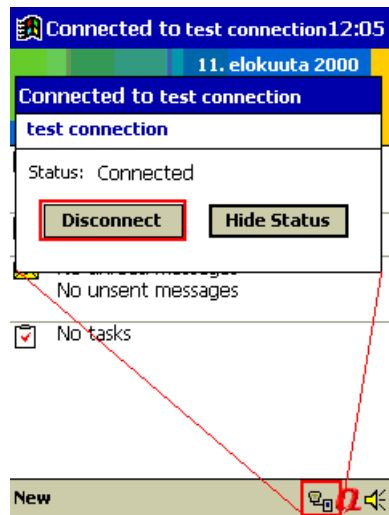


Figure 10.