
User Guide

Nokia Treasure Tag (WS-2)

NOKIA

User Guide

Nokia Treasure Tag (WS-2)

Contents

| | |
|---------------------------------------|-----------|
| Get started | 3 |
| Pair and connect | 5 |
| Set up your sensor | 7 |
| Find your sensor | 7 |
| Set your sensor to mute automatically | 8 |
| Find your phone using your sensor | 8 |
| Take a photo remotely | 9 |
| Change the battery | 9 |
| Troubleshooting and support | 11 |
| Product and safety info | 12 |
| Copyrights and other notices | 12 |
| Warranty | 13 |

Get started

Learn how to start using your proximity sensor.

About your proximity sensor

Nokia Treasure Tag (WS-2) is a proximity sensor which helps you easily find your misplaced valuables.

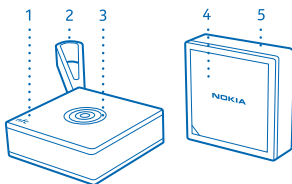
Slip the sensor in your bag, or use the strap to attach it to your keys. If you leave your items behind, your phone notifies you. If you do lose your stuff, you can check on a map where to start looking.

The proximity sensor is compatible with Windows Phone 8 or later phones with the Treasure Tag app and Bluetooth 4.0 or higher. Some of the product features may depend on the phone model or software version. You get the best experience with a Lumia phone. The app, a full list of compatible devices, and more info on compatibility are available in Store.

Read this user guide carefully before using the product. Also, read the user guide for the device that you connect to the product.

Keys and parts

Get to know your proximity sensor.



- 1 NFC area
- 2 Silicone strap with loop
- 3 Multifunction key
- 4 Battery cover
- 5 Silicone strap without loop

The surface of this product is nickel-free.

Warning: This product may contain small parts. Keep them out of the reach of small children.

Switch your sensor on or off

You can switch your sensor on or off.

Your sensor is switched on automatically once the battery is inserted.

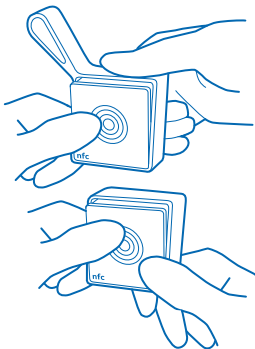
To switch your sensor off or back on again, press the multifunction key for 3 seconds.

To switch your sensor off, you can also remove the battery.

Change the strap

Your sensor comes with two silicone straps: one with a loop for attaching, one without.

1. Pull the strap from the sensor. You can use a paperclip or similar tool to carefully pry the edge of the strap from the groove.
2. Place the sensor in the other strap and carefully stretch and pull the strap into place.



Pair and connect

Before you can use your sensor, you need to pair and connect it to your phone.

You can connect your sensor to your phone using either NFC or Bluetooth. Make sure your sensor is switched on and you have a SIM in your phone.

Your sensor can be connected to one phone at a time, and your phone can have up to 4 sensors connected to it. To locate the phone currently connected to your sensor, press the multifunction key while in range, and the phone plays a notification tone. If you want to connect it to another phone, restore the sensor to factory settings first.

You can disconnect your sensor from your phone. For more info, see your phone's user guide.

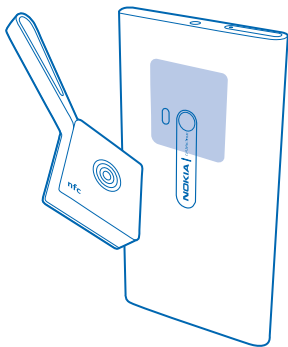
Pair your sensor using NFC

Pair your sensor with your phone quickly using NFC.

1. Make sure you've switched on NFC on your phone.

For more info on NFC, see your phone's user guide.

2. Touch the NFC areas of your sensor and phone together.



3. Follow the instructions shown on your phone.

Pair your sensor using Bluetooth

If your phone doesn't have NFC, you can pair your sensor with your phone using Bluetooth.

You need the Treasure Tag app to use the sensor. You can download the app from Windows Phone Store.

1. Make sure you've switched on Bluetooth on your phone.

For more info on Bluetooth, see your phone's user guide.

2. On your phone, tap **Treasure Tag**.
3. Select your sensor, and follow the instructions shown on the phone.

Basic use

Learn the basics of using your proximity sensor.

Set up your sensor

Define how and when your sensor alerts you.


On your phone, tap **Treasure Tag**.

1. When pairing for the first time, the setup starts automatically. Otherwise, on your phone, tap **SET UP TAG** under your sensor.
2. To choose an icon for your sensor, tap **add icon** and the icon you want.
3. To give your sensor a name, tap **TAG NAME**, and type in the name.
4. Select how and where the alert is played.

The alert is triggered whenever the Bluetooth connection between your sensor and phone is lost, or the signal is weak. A closed door, for example, may trigger an alert. Your phone plays the alert even if it is in silent mode. If you have many sensors, your phone also shows you a notification about which sensor was triggered.

Manage your sensor

Check what's going on with your sensor and change its settings. You can also pin your sensor to the start screen of your phone to access it quickly.

1. Tap **Treasure Tag**.
2. Tap the sensor you want to view. If you have several sensors, to check which is which, tap .


Add a sensor to the sensor list

Tap  > **add tag**.

Edit sensor settings

Select a sensor, and tap  > **EDIT TAG**.

Pin your sensor on the start screen of your phone

Tap  > **pin to start**. You can also tap and hold the sensor in the sensor list, and select **pin to start**.

Disconnect your sensor manually

Tap . The sensor graphic turns grey. To reconnect, tap , or tap the NFC areas of the sensor and your phone together.

Remove a sensor

Tap  > **remove tag**.

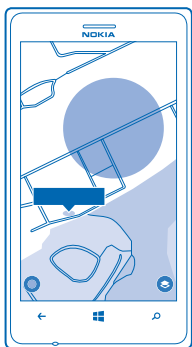
Find your sensor

Lost your sensor and have no idea where it is? You can start off your search by checking on a map where your phone lost connection with the sensor.

To check on a map where the connection was lost, GPS coordinates must be available.

Using services or downloading content, including free items, may cause the transfer of large amounts of data, which may result in data costs.


1. Make sure you've switched on GPS on your phone.
2. Tap **Treasure Tag** and the sensor you want.
3. Wait while your phone tries to search for the sensor.
4. If your phone doesn't find the sensor, tap **open map**. The approximate area where your phone last connected to the sensor is shown on the map.



Get directions to your sensor

To get route instructions, in the map view, tap the address notification and **directions**.

Find connected sensor

On your phone, tap the sensor to play a notification sound. To silence the sensor once found, press the multifunction key on the sensor, or tap  on your phone.

Set your sensor to mute automatically

Don't want your sensor to notify you while at home or at the office? Mute your sensor automatically when your phone is connected to one of your set WiFi networks.

1. On your phone, tap **Treasure Tag** >  > **quiet mode**.
2. To add a new network, tap .
3. Select the WiFi network you want from the list of available WiFi networks.

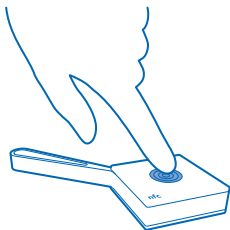
You can add several WiFi networks for quiet mode.

Whenever your phone is connected to a WiFi network you selected, all notifications from the sensor are automatically muted.

Find your phone using your sensor

Can't remember where you put your phone? Use your sensor to locate it.

1. Press the multifunction key. Your phone plays a notification sound to help you locate it, even if your phone is in silent mode.



2. When you find your phone, tap the notification on your phone to switch off the notification sound.

Take a photo remotely

Want to avoid camera shake when taking a photo with your phone? Use your sensor to take the photo remotely, so you don't have to use the camera key or icon on your phone.

If your phone does not have the Lumia Selfie app, you can download it from Store.

1. On your phone, tap **Lumia Selfie**.

2. To take a photo, on your sensor, press the multifunction key.

After taking a photo, you can edit the shot on your phone. To go back to take another photo, press the multifunction key.

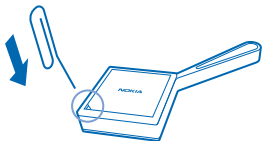
Change the battery

Your sensor comes with a battery already inserted, but eventually you need to change it.

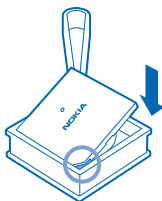
Your sensor uses a standard CR2032 battery. When the battery is completely empty, you need to replace it with a new one before you can use the sensor again.

When the battery runs low, your sensor plays an alert tone, and a notification shows up on your phone's Treasure Tag app. If you've pinned your sensor to the start screen of your phone, a battery icon shows up on the tile.

1. Put a paperclip or similar tool into the gap in the lower left corner on the back of the sensor.



2. Carefully lever the back cover up.
3. Replace the old battery with a new one. Make sure you place the battery in the right way.
4. Align the cut corners on the back cover and device, and snap the cover back into place.



Restore factory settings

You can clear all pairings and reset the sensor back to the original settings.

1. Open the back cover and remove the battery from the sensor.
2. Replace the battery while pressing the multifunction key.

You can also remove your sensor from the connected phone or other device to restore the factory settings.

After restoring the factory settings, the sensor immediately pairs with any phone that has the sensor on its list of paired devices. If you remove the sensor from the list, the sensor disconnects from this phone and restores the factory settings again.

Troubleshooting and support



To get the most out of your device, go to [**www.nokia.com/support**](http://www.nokia.com/support).

There you can find full-length user guides, troubleshooting info, discussions, and details about features, technologies, and compatibility.

Troubleshooting and discussions may not be available in all languages.

Product and safety info

Wet and dusty conditions

- This product is water-resistant and dust-resistant in compliance with protections rating .
 - Important:** Accessories for use with this device are not as durable, dust-resistant, or water-resistant as the device. For example, chargers should only be used in dry conditions, never when damp or wet.
- The device is water-resistant against cold, clean fresh water only. Do not expose the device to any other type of liquid, such as sea water.
- Do not submerge your device in water.
- If the device has been exposed to water, wipe it off with a dry cloth. If it has been exposed to any other liquid, immediately splash some clean fresh water onto the device. Carefully wipe the device dry.
- If the connectors are dusty, splash clean freshwater onto the connectors. Carefully wipe the device and connector area dry, and let the connectors dry.
- Only open the back cover in dry and clean conditions, and wipe the device dry and clean first, to prevent water or dust reaching the interior. Make sure the interior of your device and the back cover seals are dry, clean, and free of any foreign objects, as they may damage the seals against water.

Take care of your device

- Keep the device dry. Precipitation, humidity, and all types of liquids or moisture can contain minerals that corrode electronic circuits. If your device gets wet, remove the battery, and let the device dry.
- Do not use or store the device in dusty or dirty areas.
- Do not store the device in high temperatures.
- Do not store the device in cold temperatures. When the device warms to its normal temperature, moisture can form inside the device and damage it.
- Do not open the device other than as instructed in the user guide.
- Unauthorised modifications may damage the device and violate regulations governing radio devices.
- Do not drop, knock, or shake the device or the battery. Rough handling can break it.
- Only use a soft, clean, dry cloth to clean the surface of the device.

Recycle



Always return your used electronic products, batteries, and packaging materials to dedicated collection points. This way you help prevent uncontrolled waste disposal and promote the recycling of materials. All materials of the device can be recovered as materials and energy. Check how to recycle your products at www.nokia.com/recycle.

Battery safety

Do not dispose of batteries in a fire as they may explode. Obey local regulations. Recycle when possible.

Use the battery for its intended purpose only. Improper use, or use of unapproved or incompatible batteries may present a risk of fire, explosion, or other hazard, and may invalidate any approval or warranty. Never use a damaged battery.

Copyrights and other notices

Declaration of Conformity

CE 2280

Hereby, Microsoft Mobile Oy declares that this WS-2 product is in compliance with the essential requirements and other relevant provisions of Directive 1999/5/EC. A copy of the Declaration of Conformity can be found at www.nokia.com/global/declaration-of-conformity.

The availability of products may vary by region. For more info, contact your dealer. This device may contain commodities, technology or software subject to export laws and regulations from the US and other countries. Diversion contrary to law is prohibited.

The contents of this document are provided "as is". Except as required by applicable law, no warranties of any kind, either express or implied, including, but not limited to, the implied warranties of merchantability and fitness for a particular purpose, are made in relation to the accuracy, reliability or contents of this document. Microsoft Mobile reserves the right to revise this document or withdraw it at any time without prior notice.

To the maximum extent permitted by applicable law, under no circumstances shall Microsoft Mobile or any of its licensors be responsible for any loss of data or income or any special, incidental, consequential or indirect damages howsoever caused.

Reproduction, transfer or distribution of part or all of the contents in this document in any form without the prior written permission of Microsoft Mobile is prohibited. Microsoft Mobile operates a policy of continuous development. Microsoft Mobile reserves the right to make changes and improvements to any of the products described in this document without prior notice.

Microsoft Mobile does not make any representations, provide a warranty, or take any responsibility for the functionality, content, or end-user support of third-party apps provided with your device. By using an app, you acknowledge that the app is provided as is.

FCC/INDUSTRY CANADA NOTICE

This device complies with part 15 of the FCC rules and Industry Canada licence-exempt RSS standard(s). Operation is subject to the following two conditions: (1) This device may not cause harmful interference, and (2) this device must accept any interference received, including interference that may cause undesired operation. For more info, go to transition.fcc.gov/oet/rfsafety/rf-faqs.html. Any changes or modifications not expressly approved by Microsoft Mobile could void the user's authority to operate this equipment.

Note: This equipment has been tested and found to comply with the limits for a Class B digital device, pursuant to part 15 of the FCC Rules. These limits are designed to provide reasonable protection against harmful interference in a residential installation. This equipment generates, uses and can radiate radio frequency energy and, if not installed and used in accordance with the instructions, may cause harmful interference to radio communications. However, there is no guarantee that interference will not occur in a particular installation. If this equipment does cause harmful interference to radio or television reception, which can be determined by turning the equipment off and on, the user is encouraged to try to correct the interference by one or more of the following measures:

- Reorient or relocate the receiving antenna.
- Increase the separation between the equipment and receiver.
- Connect the equipment into an outlet on a circuit different from that to which the receiver is connected.
- Consult the dealer or an experienced radio/TV technician for help.

NOTE: FCC Radiation Exposure Statement: This equipment complies with FCC radiation exposure limits set forth for an uncontrolled environment. This transmitter must not be co-located or operating in conjunction with any other antenna or transmitter.

TM © 2014 Microsoft Mobile. All rights reserved. Nokia is a registered trademark of Nokia Corporation. Third party products/names may be TM of respective owner.

The Bluetooth word mark and logos are owned by the Bluetooth SIG, Inc. and any use of such marks by Microsoft Mobile is under license.

Warranty

The warranty period Microsoft Mobile provides for this product is 12 months. For details please visit the local online warranty text web site www.nokia.com/support.