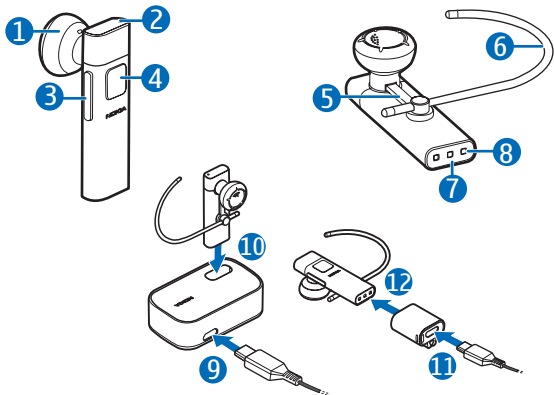


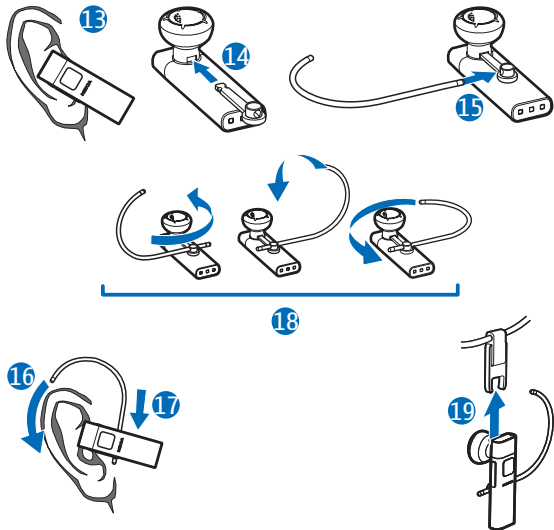
Nokia Bluetooth Headset BH-804



9218865

Issue 1.0

© 2010 Nokia. All rights reserved.



DECLARATION OF CONFORMITY

Hereby, NOKIA CORPORATION declares that this BH-804 product is in compliance with the essential requirements and other relevant provisions of Directive 1999/5/EC. A copy of the Declaration of Conformity

can be found at http://www.nokia.com/phones/declaration_of_conformity/.

CE 0984

© 2010 Nokia. All rights reserved.

Bluetooth is a registered trademark of Bluetooth SIG, Inc.

Introduction

With the Nokia Bluetooth Headset BH-804, you can make and answer calls hands-free with your compatible mobile device.

Read this user guide carefully before using the headset. Also, read the user guide for the device that you connect to the headset.

The surface of this device does not contain nickel in the platings. The surface of this device contains stainless steel.

Bluetooth wireless technology

The headset is compliant with the Bluetooth Specification 2.0 + EDR supporting the Headset Profile 1.1 and Hands-Free Profile 1.5. Check with the manufacturers of other devices to determine their compatibility with this device.

Get started

The headset contains the following parts shown on the title page: earpiece (1), indicator light (2), volume keys (3), multifunction key (4), earloop holder (5), earloop (6), microphone (7), and charging contacts (8).

Before using the headset, you must charge the battery and pair the headset with a compatible device.

Compatible chargers

This device is intended for use when supplied with power from the following chargers: AC-6 and DC-6. The exact charger model number may vary depending on the type of plug. The plug variant is identified by one of the following: E, EB, X, AR, U, A, C, or UB.

Charge the battery

1. Connect the charger to a wall outlet.
2. To charge the headset in the desk stand (if provided with the headset), connect the charger cable to the charger connector at the side of the desk stand (9), and place the lower end of the headset into the slot on the desk stand (10). The headset switches off.

To charge the headset using the charger adapter (if provided with the headset), connect the charger cable to the charger connector on the adapter (11), and insert the lower end of the headset into the adapter (12). The headset switches off. To keep the adapter attached to

the charger cable, push the cable into the slot on the adapter.

The red indicator light is displayed during charging. Charging the battery fully may take up to 1 hour with the AC-6 or DC-6 charger.

3. When the battery is fully charged, the green indicator light is displayed. Remove the headset from the desk stand, or remove the adapter.
4. Disconnect the charger from the wall outlet.

The battery can also be charged through the USB port of a compatible computer using the Nokia Connectivity Cable CA-101 (sold separately). Connect one end of the cable to the desk stand or charger adapter and the other end to the USB port on the computer.

The fully charged battery has power for up to 4 hours of talk time or up to 150 hours of standby time.

When the battery charge is low, the headset beeps about every minute, and the red indicator light flashes.

Switch on or off

To switch on, press and hold the multifunction key for about 2 seconds. The headset beeps, and the green indicator light is displayed. The headset first tries to connect to the last used mobile device and then, if the connection fails, to one of the other paired devices. When the headset is connected to a device and is ready for use, the blue indicator light flashes slowly. If the headset has not been paired with a device, it

automatically enters pairing mode.

To switch off, press and hold the multifunction key for about 4 seconds. The headset beeps, and the red indicator light is briefly displayed. If the headset is not connected to a device within about 30 minutes, it switches off automatically.

Pair and connect the headset

Before using the headset, you must pair and connect it to a compatible device.

1. Ensure that your mobile device is switched on and the headset is off.
2. If the headset has not been previously paired with a device, switch on the headset. The headset enters pairing mode, and the blue indicator light starts to flash quickly.
3. If the headset has been previously paired with a device, ensure that the headset is switched off, and press and hold the multifunction key (for about 4 seconds) until the blue indicator light starts to flash quickly.
3. Activate the Bluetooth feature on your device, and set it to search for Bluetooth devices. For details, see the user guide of your mobile device.
4. Select the headset from the list of found devices.
5. If necessary, enter the passcode 0000 to pair and connect the headset to your device.

In some devices, you may need to make the connection separately after pairing.

If pairing is successful, the headset appears in the menu of the mobile device where you can view the currently paired Bluetooth devices.

When the headset is connected to your device and is ready for use, the blue indicator light flashes slowly.

To disconnect the headset from your mobile device, switch off the headset, or disconnect it in the Bluetooth menu of the device.

If you disconnect the headset from your mobile device, you can reconnect the headset to the device without switching the headset off and back on. Press and hold the multifunction key for about 2 seconds, or make the connection in the Bluetooth menu of your device.

You may be able to set your device so that the headset connects to it automatically. To activate this feature in a Nokia device, change the paired device settings in the Bluetooth menu.

Basic use

Place the headset on the ear

The headset is provided with an earloop that you can use for a better fit on your ear.

To use the headset without the earloop, gently push the earpiece into your ear (13), and point the headset toward your mouth.

To use the headset with the earloop, insert the earloop holder into the slot at the base of the earpiece (14), and insert the earloop into the opening on the holder (15). To wear the headset on the right ear, rotate the earloop so that the loop is to the right of the Nokia logo. Slide the earloop over your ear (16), and push or pull the earloop to set its length. Gently push the earpiece into your ear, and point the headset toward your mouth (17).

To use the headset on the left ear, rotate the earloop so that it is to the left of the Nokia logo (18).

To detach the earloop, gently pull it from the headset.

Carry the headset in the strap

The headset may be provided with a carrying strap. You can use the

strap to wear the headset around your neck.

To attach the headset to the strap, insert the headset into the catch at the end of the strap (19).

To detach the headset, pull it from the catch.

Calls

To make a call, use your mobile device in the normal way when the headset is connected to it.

To redial the number you last called (if your mobile device supports this feature with the headset), when no call is in progress, press the multifunction key twice.

To activate voice dialling (if your mobile device supports this feature with the headset), when no call is in progress, press and hold the multifunction key for

about 2 seconds. Proceed as described in the user guide of the mobile device.

To answer or end a call, press the multifunction key. To reject a call, press this key twice.

To adjust the headset volume, press either volume key.

To switch a call from the headset to a connected device, press and hold the multifunction key for about 4 seconds (the headset switches off), or use the keys of your device. To switch the call back to the headset, switch on the headset, or press and hold the multifunction key for about 2 seconds (when the headset is switched on).

Clear settings or reset

To clear all the pairing settings from the headset, switch off the

headset, and press and hold the multifunction key (for over 8 seconds) until the red, green, and blue indicator lights start to alternate. After the settings are cleared, the headset enters pairing mode.

To reset the headset if it stops functioning, even though it is charged, connect the headset to a charger that is plugged into a wall outlet. The reset does not clear the pairing settings.

Troubleshooting

If you cannot connect the headset to your compatible device, check that the headset is charged, switched on, and paired with the device.