

# DECLARATION OF CONFORMITY

# CE 0434

Hereby, NOKIA CORPORATION declares that this RM-237 product is in compliance with the essential requirements and other relevant provisions of Directive 1999/5/EC. A copy of the Declaration of Conformity can be found at [www.nokia.com/phones/declaration\\_of\\_conformity/](http://www.nokia.com/phones/declaration_of_conformity/).

© 2007 Nokia. All rights reserved.

Nokia, Nokia Connecting People, Nokia Care, Visual Radio, and Navi are trademarks or registered trademarks of Nokia Corporation. Nokia tune is a sound mark of Nokia Corporation. Other product and company names mentioned herein may be trademarks or tradenames of their respective owners.

Reproduction, transfer, distribution, or storage of part or all of the contents in this document in any form without the prior written permission of Nokia is prohibited.

US Patent No 5818437 and other pending patents. T9 text input software Copyright © 1997-2007. Tegic Communications, Inc. All rights reserved.



Includes RSA BSAFE cryptographic or security protocol software from RSA Security.



POWERED Java and all Java-based marks are trademarks or registered trademarks of Sun Microsystems, Inc.

Bluetooth is a registered trademark of Bluetooth SIG, Inc.

This product is licensed under the MPEG-4 Visual Patent Portfolio License (i) for personal and noncommercial use in connection with information which has been encoded in compliance with the MPEG-4 Visual Standard by a consumer engaged in a personal and noncommercial activity and (ii) for use in connection with MPEG-4 video provided by a licensed video provider. No license is granted or shall be implied for any other use. Additional information, including that related to promotional, internal, and commercial uses, may be obtained from MPEG LA, LLC. See <http://www.mpegla.com>.

Nokia operates a policy of ongoing development. Nokia reserves the right to make changes and improvements to any of the products described in this document without prior notice.

TO THE MAXIMUM EXTENT PERMITTED BY APPLICABLE LAW, UNDER NO CIRCUMSTANCES SHALL NOKIA OR ANY OF ITS LICENSORS BE RESPONSIBLE FOR ANY LOSS OF DATA OR INCOME OR ANY SPECIAL, INCIDENTAL, CONSEQUENTIAL OR INDIRECT DAMAGES HOWSOEVER CAUSED.

THE CONTENTS OF THIS DOCUMENT ARE PROVIDED "AS IS". EXCEPT AS REQUIRED BY APPLICABLE LAW, NO WARRANTIES OF ANY KIND, EITHER EXPRESS OR IMPLIED, INCLUDING, BUT NOT LIMITED TO, THE IMPLIED WARRANTIES OF MERCHANTABILITY AND FITNESS FOR A PARTICULAR PURPOSE, ARE MADE IN RELATION TO THE ACCURACY, RELIABILITY OR CONTENTS OF THIS DOCUMENT. NOKIA RESERVES THE RIGHT TO REVISE THIS DOCUMENT OR WITHDRAW IT AT ANY TIME WITHOUT PRIOR NOTICE.

The availability of particular products and applications for these products may vary by region. Please check with your Nokia dealer for details, and availability of language options.

#### Export controls

This device may contain commodities, technology or software subject to export laws and regulations from the US and other countries. Diversion contrary to law is prohibited.

Check [www.nokia.com.hk/support](http://www.nokia.com.hk/support) to get the latest version of this guide, contacts, information and additional services and also to download PC Suite and other software. Consult the nearest service point and set up your phone.

**NOKIA**  
Care

# Contents

<b>For your safety .....</b>	<b>6</b>	Keypad lock (keyguard).....	17
<b>About your device.....</b>	<b>7</b>	Functions without a SIM card.....	18
<b>Network services.....</b>	<b>7</b>	<b>Call functions.....</b>	<b>18</b>
<b>Shared memory.....</b>	<b>8</b>	Make a call.....	18
<b>General information.....</b>	<b>9</b>	Answer or reject a call.....	19
Access codes.....	9	Options during a call.....	19
Configuration setting service.....	9	<b>Write text.....</b>	<b>20</b>
Download content.....	10	Text modes.....	20
Nokia support.....	10	Traditional text input.....	20
		Predictive text input.....	20
<b>Get started.....</b>	<b>11</b>	<b>Navigate the menus.....</b>	<b>21</b>
Install SIM card and battery.....	11	<b>Messaging.....</b>	<b>21</b>
Insert a microSD card.....	12	Text messages.....	21
Charge the battery.....	13	Multimedia messages.....	22
Antenna.....	13	Message sending process.....	23
Headset.....	13	Postcards.....	24
Strap.....	14	Flash messages.....	24
<b>Your device.....</b>	<b>14</b>	Nokia Xpress audio messaging.....	25
Keys and parts.....	14	Memory full.....	25
Switch the device on and off.....	15	Folders.....	25
Standby mode.....	15	E-mail application.....	26
Flight mode.....	17	Instant messages.....	27
		Voice messages.....	30
		Info messages.....	30

Service commands.....	30
Delete messages.....	31
SIM messages.....	31
Message settings.....	31
<b>Contacts.....</b>	<b>33</b>
Save names and phone numbers.....	33
Save details.....	33
Settings.....	33
Groups.....	34
Search for a contact.....	34
Copy or move contacts.....	34
Edit contact details.....	34
Delete contacts.....	34
Synchronize all.....	35
Business cards.....	35
Dialing shortcuts.....	35
Info, service, and my numbers.....	35
<b>Call log.....</b>	<b>36</b>
<b>Positioning.....</b>	<b>36</b>
<b>Settings.....</b>	<b>37</b>
Profiles.....	37
Themes.....	37
Tones.....	37
Display.....	38
Time and date.....	38
My shortcuts.....	38
Infrared.....	39
Bluetooth.....	40
Packet data.....	40
Data transfer.....	41

USB data cable.....	42
Call.....	42
Phone.....	43
Enhancements.....	44
Configuration.....	44
Security.....	44
Restore factory settings.....	46

<b>Operator menu.....</b>	<b>46</b>
---------------------------	-----------

<b>Gallery.....</b>	<b>47</b>
Folders and files.....	47
Print images.....	47
Memory card.....	47

<b>Media.....</b>	<b>48</b>
Camera and video.....	48
Media player.....	49
Music player.....	50
Radio.....	51
Voice recorder.....	52
Equalizer.....	52
Stereo widening.....	52

<b>Push to talk.....</b>	<b>53</b>
PTT channels.....	53
Switch PTT on and off.....	53
Make and receive a PTT call.....	54
Callback requests.....	55
Add a one-to-one contact.....	55
PTT settings.....	55
Configuration settings.....	56

<b>Applications.....</b>	<b>56</b>	<b>Genuine enhancements.....</b>	<b>66</b>
Launch a game.....	56	Enhancements.....	67
Launch an application.....	56	Battery.....	67
Application options.....	56		
Download an application.....	57	<b>Battery.....</b>	<b>68</b>
		Battery information.....	68
<b>Organizer.....</b>	<b>57</b>	Nokia battery authentication guidelines .....	69
Alarm clock.....	57		
Calendar.....	58	<b>Care and maintenance.....</b>	<b>70</b>
To-do list.....	58		
Notes.....	59	<b>Additional safety information.....</b>	<b>71</b>
Calculator.....	59	Small children.....	71
Timers.....	59	Operating environment.....	71
Stopwatch.....	60	Medical devices.....	71
		Vehicles.....	72
<b>Web.....</b>	<b>60</b>	Potentially explosive environments.....	72
Set up browsing.....	60	Emergency calls.....	73
Connect to a service.....	60	CERTIFICATION INFORMATION (SAR).....	73
Browse pages.....	61	Limited Warranty.....	74
Bookmarks.....	61		
Appearance settings.....	62	<b>Index.....</b>	<b>76</b>
Security settings.....	62		
Download settings.....	62		
Service inbox.....	63		
Cache memory.....	63		
Browser security.....	63		
<b>SIM services.....</b>	<b>65</b>		
<b>PC connectivity.....</b>	<b>65</b>		
Nokia PC Suite.....	65		
Packet data, HSCSD, and CSD.....	65		
Bluetooth.....	66		
Data communication applications.....	66		

## For your safety

Read these simple guidelines. Not following them may be dangerous or illegal. Read the complete user guide for further information.



### SWITCH ON SAFELY

Do not switch the device on when wireless phone use is prohibited or when it may cause interference or danger.



### ROAD SAFETY COMES FIRST

Obey all local laws. Always keep your hands free to operate the vehicle while driving. Your first consideration while driving should be road safety.



### INTERFERENCE

All wireless devices may be susceptible to interference, which could affect performance.



### SWITCH OFF IN HOSPITALS

Follow any restrictions. Switch the device off near medical equipment.



### SWITCH OFF IN AIRCRAFT

Follow any restrictions. Wireless devices can cause interference in aircraft.



### SWITCH OFF WHEN REFUELING

Do not use the device at a refueling point. Do not use near fuel or chemicals.



### SWITCH OFF NEAR BLASTING

Follow any restrictions. Do not use the device where blasting is in progress.



### USE SENSIBLY

Use only in the positions as explained in the product documentation. Do not touch the antenna areas unnecessarily.



### QUALIFIED SERVICE

Only qualified personnel may install or repair this product.



### ENHANCEMENTS AND BATTERIES

Use only approved enhancements and batteries. Do not connect incompatible products.



### WATER-RESISTANCE

Your device is not water-resistant. Keep it dry.



### BACK-UP COPIES

Remember to make back-up copies or keep a written record of all important information stored in your device.



### CONNECTING TO OTHER DEVICES

When connecting to any other device, read its user guide for detailed safety instructions. Do not connect incompatible products.



### EMERGENCY CALLS

Ensure the phone function of the device is switched on and in service. Press the end key

as many times as needed to clear the display and return to the standby mode. Enter the emergency number, then press the call key. Give your location. Do not end the call until given permission to do so.

## About your device

The wireless device described in this guide is approved for use on the on the EGSM 900 and GSM 1800 and 1900 networks. Contact your service provider for more information about networks.

When using the features in this device, obey all laws and respect local customs, privacy and legitimate rights of others, including copyrights.

Copyright protections may prevent some images, music (including ringing tones), and other content from being copied, modified, transferred, or forwarded.



**Warning:** To use any features in this device, other than the alarm clock, the device must be switched on. Do not switch the device on when wireless device use may cause interference or danger.

## Network services

To use the phone you must have service from a wireless service provider. Many of the features require special network features. These features are not available on

all networks; other networks may require that you make specific arrangements with your service provider before you can use the network services. Your service

provider can give you instructions and explain what charges will apply. Some networks may have limitations that affect how you can use network services. For instance, some networks may not support all language-dependent characters and services.

Your service provider may have requested that certain features be disabled or not activated in your device. If so, these features will not appear on your device menu. Your device may also have a special configuration such

as changes in menu names, menu order, and icons. Contact your service provider for more information.

This device supports WAP 2.0 protocols (HTTP and SSL) that run on TCP/IP protocols. Some features of this device, such as multimedia messaging (MMS), e-mail application, instant messaging, remote synchronization, and content downloading using the browser or MMS, require network support for these technologies.

## Shared memory

The following features in this device may share memory: gallery, contacts, text messages, multimedia messages, and instant messages, e-mail, calendar, to-do notes, Java™ games and applications, and note application. Use of one or more of these features may reduce the memory available for the remaining features sharing memory. Your device may display a message that the memory is full when you try to use a shared memory feature. In this case, delete some of the information or entries stored in the shared memory features before continuing.



# General information

## Access codes

### Security code

The security code (5 to 10 digits) helps to protect your phone against unauthorized use. The preset code is **12345**. You can change the code, and set the phone to request the code. See "Security," p. 44.

### PIN codes

The personal identification number (PIN) code and the universal personal identification number (UPIN) code (4 to 8 digits) help to protect your SIM card against unauthorized use. See "Security," p. 44.

The PIN2 code (4 to 8 digits) may be supplied with the SIM card and is required for some functions.

The module PIN is required to access the information in the security module. See "Security module," p. 64.

The signing PIN is required for the digital signature. See "Digital signature," p. 64.

### PUK codes

The personal unblocking key (PUK) code and the universal personal unblocking key (UPUK) code (8 digits) are required to change a blocked PIN code and UPIN code, respectively. The PUK2 code (8 digits) is required to change a blocked PIN2 code. If the codes are not supplied with the SIM card, contact your local service provider for the codes.

### Barring password

The barring password (4 digits) is required when using the [Call barring service](#). See "Security," p. 44.

### Configuration setting service

To use some of the network services, such as mobile internet services, MMS, Nokia Xpress audio messaging, or remote internet server synchronization, your device needs the correct configuration settings. For more information on availability, contact your service provider, the nearest authorized Nokia dealer, or visit the support area on the Nokia website. See "Nokia support," p. 10.

When you have received the settings as a configuration message and the settings are not automatically saved and activated, **Configuration sett. received** is displayed.

To save the settings, select **Show > Save**. If required, enter the PIN code supplied by the service provider .

To discard the received settings, select **Exit** or **Show > Discard**.

## Download content

You may be able to download new content (for example, themes) to your phone (network service).



**Important:** Use only services that you trust and that offer adequate security and protection against harmful software.

For the availability of different services, pricing, and tariffs, contact your service provider.

## Nokia support

### Support information

Check [www.nokia.com.hk/support](http://www.nokia.com.hk/support) for the latest version of this guide, additional information, downloads, and services related to your Nokia product.

## Configuration settings service

You may also download free configuration settings such as MMS, GPRS, e-mail, and other services for your device model at [www.nokia.com.hk/settings](http://www.nokia.com.hk/settings).

## Nokia PC Suite

You may find PC Suite and related information on the Nokia website at [www.nokia.com.hk/pcsuite](http://www.nokia.com.hk/pcsuite).

## Customer service

If you need to contact customer service, check the list of local Nokia Care contact centers at

**NOKIA**  
**Care**

[www.nokia.com.hk/contactus](http://www.nokia.com.hk/contactus).

## Maintenance

For maintenance services, check your nearest Nokia service center at [www.nokia.com.hk/repair](http://www.nokia.com.hk/repair).

# Get started

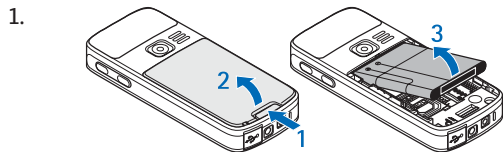
## Install SIM card and battery

Always switch the device off and disconnect the charger before removing the battery.

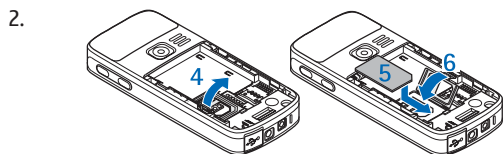
For availability and information on using SIM card services, contact your SIM card vendor. This may be the service provider or other vendor.

This device is intended for use with a BL-5C battery. Always use original Nokia batteries. See "Nokia battery authentication guidelines," p. 69.

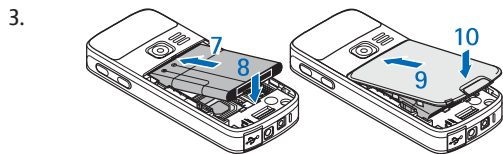
The SIM card and its contacts can be easily damaged by scratches or bending, so be careful when handling, inserting, or removing the card.



Slide the release button (1) to unlock and remove the back cover (2). Remove the battery as shown (3).



Open the SIM card holder (4). Insert the SIM card (5) with the contact surface facing down into the holder. Close the SIM card holder (6).



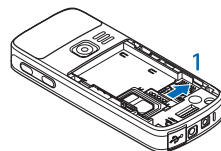
Observe the battery contacts (7), and insert the battery (8). Place the upper part of the back cover on the device (9), and close it (10).

## Insert a microSD card

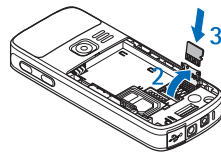
Use only compatible microSD cards approved by Nokia for use with this device. Nokia uses approved industry standards for memory cards, but some brands may not be fully compatible with this device. Incompatible cards may damage the card and the device and corrupt data stored on the card.

1. Switch the device off, and remove the back cover and the battery of the device.

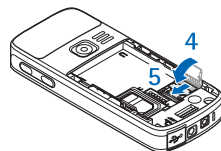
2. Slide the memory card holder to unlock (1).



3. Open the card holder (2), and insert the memory card into the card holder with the contact surface facing inwards (3).



4. Close the card holder (4), and slide the card holder to lock it (5).



5. Insert the battery, and attach the back cover to the device.

## Charge the battery

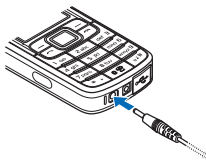
Check the model number of any charger before use with this device. This device is intended for use when supplied with power from the AC-3 or AC-4 charger.



**Warning:** Use only batteries, chargers, and enhancements approved by Nokia for use with this particular model. The use of any other types may invalidate any approval or warranty, and may be dangerous.

For availability of approved enhancements, please check with your dealer. When you disconnect the power cord of any enhancement, grasp and pull the plug, not the cord.

1. Connect the charger to a wall socket.
2. Connect the lead from the charger to the socket on the bottom of your device.



If the battery is completely discharged, it may take a few minutes before the charging indicator appears on the display or before any calls can be made.

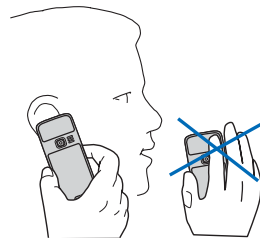
The charging time depends on the charger used. Charging a BL-5C battery with the AC-3 charger takes approximately 2 hours and 45 minutes while the device is in the standby mode.

## Antenna

Your device has an internal antenna.



**Note:** As with any other radio transmitting device, do not touch the antenna unnecessarily when the device is switched on. Contact with the antenna affects call quality and may cause the device to operate at a higher power level than otherwise needed. To optimize antenna performance and battery life, avoid contact with the antenna area when operating the device.



## Headset



**Warning:** Listen to music at a moderate level. Continuous exposure to high volume may damage your hearing.

Pay special attention to volume level if you connect any other headsets to the device.



**Warning:** When you use the headset, your ability to hear outside sounds may be affected. Do not use the headset where it can endanger your safety.

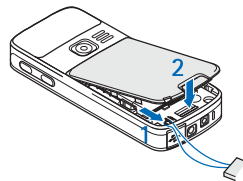
Do not connect products that create an output signal as this may cause damage to the device. Do not connect any voltage source to the Nokia AV Connector.

When connecting any external device or any headset, other than those approved by Nokia for use with this device, to the Nokia AV Connector, pay special attention to volume levels.

## Strap

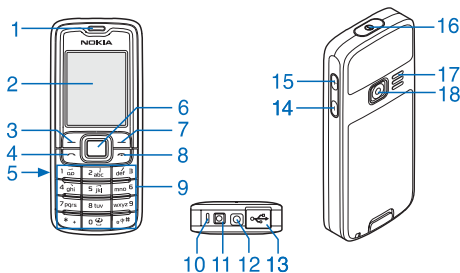
1. Open the back cover.

2. Hook a strap behind the clamp as shown in the picture (1) and close the back cover (2).



## Your device

### Keys and parts



- 1 — Earpiece
- 2 — Display

- 3 — Left selection key
- 4 — Call key
- 5 — Infrared (IR) port
- 6 — Navi™ key: 4-way navigation key and middle selection key
- 7 — Right selection key
- 8 — End key
- 9 — Keypad
- 10 — Microphone
- 11 — Charger connector
- 12 — Nokia AV Connector (2.5 mm)
- 13 — Mini USB cable connector

- 14 — Volume down key
- 15 — Volume up key
- 16 — Power key
- 17 — Loudspeaker
- 18 — Camera lens

## Switch the device on and off

To switch the device on or off, press and hold the power key.

If the device prompts for a PIN or a UPIN code, enter the code (displayed as \*\*\*\*), and select **OK**.

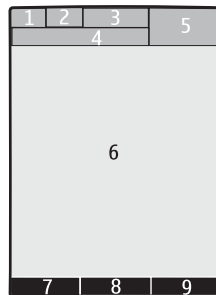
The device may prompt you to set the time and date. Enter the local time, select the time zone of your location in terms of the time difference with respect to Greenwich mean time (GMT), and enter the date. See "Time and date," p. 38.

When you switch on your device for the first time and the device is in the standby mode, you may be prompted to get the configuration settings from your service provider (network service). For more information refer to [Connect to service provider support](#). See "Configuration," p. 44. See "Configuration setting service," p. 9.

## Standby mode

When the device is ready for use, and you have not entered any characters, the device is in the standby mode.

### Display



- 1 — Signal strength of the cellular network
- 2 — Battery charge status
- 3 — Indicators
- 4 — Name of the network or the operator logo
- 5 — Clock
- 6 — Main screen
- 7 — The function of the left selection key is [Go to](#) or a shortcut to another function. See "Left selection key," p. 38.
- 8 — The function of the middle selection key is [Menu](#).

9 — The function of the right selection key is **Names** or a shortcut to another function. See "Right selection key," p. 39. Operator variants may have an operator-specific name to access an operator-specific website.

## Power saving

Your device has a **Power saver** and a **Sleep mode** feature in order to save battery power in the standby mode when no key of the device is pressed. These features may be activated. See "Display," p. 38.

## Active standby

The active standby mode displays a list of selected device features and information that you can directly access.

To switch active standby on or off, select **Menu** > **Settings** > **Display** > **Active standby** > **Active standby mode** > **On** or **Off**.

In the standby mode, scroll up or down to navigate in the list, and choose **Select** or **View**. The arrows indicate that further information is available. To stop navigation, select **Exit**.

To organize and change the active standby mode, select **Options** and from the available options.

## Shortcuts in the standby mode

To access the list of dialed numbers, press the call key once. Scroll to the number or name, and press the call key to call the number.

To open the web browser, press and hold **0**.

To call your voice mailbox, press and hold **1**.

Use keys as a shortcut. See "My shortcuts," p. 38.

## Indicators

 unread messages


 unsent, canceled, or failed messages

 missed call

 /  Your phone is connected to the IM service, and the availability status is online or offline.

 instant messages received

 The keypad is locked.

 The phone does not ring for an incoming call or text message.

 The alarm clock is activated.

 The countdown timer is running.

 The stopwatch is running in the background.

**G** / **E** The phone is registered to the GPRS or EGPRS network.

 /  A GPRS or EGPRS connection is established.

 /  The GPRS or EGPRS connection is suspended (on hold).

 Bluetooth is active.

 /  A push-to-talk connection is active or suspended.



2 If you have two phone lines, the second phone line is selected.

↑ All incoming calls are diverted to another number.

🔊 The loudspeaker is activated, or the music stand is connected to the device.


👤 Calls are limited to a closed user group.

🕒 The timed profile is selected.

🎧/📶/🔊 A headset, handsfree, or loopset is connected to the device.

## Flight mode

You can deactivate all radio frequency functions and still have access to offline games, calendar, and phone numbers.

Use the flight mode in radio sensitive environments—on board aircraft or in hospitals. When the flight mode is active,  is shown.

Select **Menu** > **Settings** > **Profiles** > **Flight** > **Activate** or **Personalise** to activate or set up the flight mode.

To deactivate the flight mode, select any other profile.

**Emergency call in flight mode.** Enter the emergency number, press the call key, and select **Yes** when **Exit flight profile?** is displayed. The phone attempts to make an emergency call.



**Warning:** With the flight profile you cannot make or receive any calls, including emergency calls, or

use other features that require network coverage. To make calls, you must first activate the phone function by changing profiles. If the device has been locked, enter the lock code. If you need to make an emergency call while the device is locked and in the flight profile, you may be also able to enter an official emergency number programmed in your device in the lock code field and select 'Call'. The device will confirm that you are about to exit flight profile to start an emergency call.

## Keypad lock (keyguard)

To prevent accidental keypresses, select **Menu**, and press \* within about 3.5 seconds to lock the keypad.

To unlock the keypad, select **Unlock**, and press \* within about 1.5 seconds. If **Security keyguard** is set to **On**, enter the security code if requested.

To answer a call when keyguard is on, press the call key. When you end or reject the call, the keypad automatically locks.

Further features are **Automatic keyguard** and **Security keyguard**. See "Phone," p. 43.

When the keyguard is on, calls may be possible to the official emergency number programmed into your device.

## Functions without a SIM card

Several functions of your device may be used without installing a SIM card (for example, the data transfer with

a compatible PC or another compatible device). Some functions appear dimmed in the menus and cannot be used.

## Call functions

### Make a call

#### Number dialing

1. Enter the phone number, including the area code.  
For international calls, press \* twice for the international prefix (the + character replaces the international access code), enter the country code, the area code without the leading 0, if necessary, and the phone number.
2. To call the number, press the call key. To adjust the volume in a call, press the volume key up or down.
3. To end the call or to cancel the call attempt, press the end key.

You can search for a name or phone number that you have saved in **Contacts**. See "Search for a contact," p. 34. Press the call key to call the number.

To access the list of call log, press the call key once in the standby mode. To call the number, select a number or name, and press the call key.

#### Dialing shortcuts

Assign a phone number to one of the number keys, 2 to 9. See "Dialing shortcuts," p. 35.

Call the number in one of the following ways:

Press a number key, then the call key.

OR

If **Speed dialling** is set to **On**, press and hold a number key until the call begins.

Further details are described in **Speed dialling**. See "Call," p. 42.

## Enhanced voice dialing

You can make a phone call by saying the name that is saved in the contact list of the device.

Voice commands are language-dependent. Set the **Voice recognition language** before using voice dialing. See "Phone," p. 43.



**Note:** Using voice tags may be difficult in a noisy environment or during an emergency, so you should not rely solely upon voice dialing in all circumstances.

1. In the standby mode, press and hold the right selection key or the volume down key. A short tone sounds, and **Speak now** is displayed.
2. Speak the name of the contact you want to dial clearly. If the voice recognition is successful, a list with matches is shown. The device plays the voice command of the first match on the list. If it is not the correct command, scroll to another entry.

Using voice commands to carry out a selected device function is similar to voice dialing. See "Voice commands," p. 39.

## Answer or reject a call

To answer an incoming call, press the call key. To end the call, press the end key.

To reject an incoming call, press the end key. To mute the ringing tone, select **Silence**.

To answer a waiting call during an active call (network service), press the call key. The first call is put on hold.

To end the active call, press the end key. You may also activate the **Call waiting** function. See "Call," p. 42.

## Options during a call

Many of the options that you can use during a call are network services. For availability, contact your service provider.

During a call, select **Options** and from the following options:

Call options are **Mute** or **Unmute**, **Contacts**, **Menu**, **Lock keypad**, **Record**, **Voice clarity**, **Loudspeaker** or **Handset**.

Network options are **Answer** or **Reject**, **Hold** or **Unhold**, **New call**, **Add to conference**, **End call**, **End all calls**, and the following:

- **Send DTMF** — to send tone strings
- **Swap** — to switch between the active call and the call on hold
- **Transfer** — to connect a call on hold to an active call and disconnect yourself
- **Conference** — to make a conference call
- **Private call** — to have a private discussion in a conference call





**Warning:** Do not hold the device near your ear when the loudspeaker is in use, because the volume may be extremely loud.

# Write text

## Text modes

To enter text (for example, when writing messages) you can use traditional or predictive text input.

When you write text, press and hold **Options** to toggle between traditional text input, indicated by , and predictive text input, indicated by . Not all languages are supported by predictive text input.

The character cases are indicated by **Abc**, **abc**, and **ABC**. To change the character case, press **#**. To change from the letter to number mode, indicated by **123**, press and hold **#**, and select **Number mode**. To change from the number to the letter mode, press and hold **#**.

To set the writing language, select **Options** > **Writing language**.

## Traditional text input

Press a number key, **2** to **9**, repeatedly until the desired character appears. The available characters depend on the selected writing language.

If the next letter you want is located on the same key as the present one, wait until the cursor appears and enter the letter.

To access the most common punctuation marks and special characters, repeatedly press the number key **1** or press **\*** to select a special character.

## Predictive text input

Predictive text input is based on a built-in dictionary to which you can also add new words.

1. Start writing a word, using the keys **2** to **9**. Press each key only once for one letter.
2. When you finish writing the word and it is correct, to confirm it by adding a space, press **0**.

If the word is not correct, press **\*** repeatedly, and select the word from the list.

If the **?** character is displayed after the word, the word you intended to write is not in the dictionary.

To add the word to the dictionary, select **Spell**. Enter the word using traditional text input, and select **Save**. To write compound words, enter the first part of the word, and press the navigation key right to confirm it. Write the last part of the word, and confirm the word.

3. Start writing the next word.

## Navigate the menus

The device offers you an extensive range of functions that are grouped into menus.

1. To access the menu, select **Menu**.
2. Scroll through the menu, and select an option (for example, **Settings**).
3. If the selected menu contains further submenus, select one (for example, **Call**).
4. If the selected menu contains further submenus, repeat step 3.

5. Select the setting of your choice.
6. To return to the previous menu level, select **Back**.  
To exit the menu, select **Exit**.

To change the menu view, select **Options** > **Main menu view** > **List** or **Grid**.

To rearrange the menu, scroll to the menu to be moved, and select **Options** > **Organise** > **Move**. Scroll to where you want to move the menu, and select **OK**. To save the change, select **Done** > **Yes**.

## Messaging

You can read, write, send, and save text, multimedia, e-mail, audio, and flash messages and postcards. All messages are organized into folders.

### Text messages

Your device supports the sending of text messages beyond the character limit for a single message. Longer messages are sent as a series of two or more messages. Your service provider may charge accordingly.

Characters that use accents or other marks, and characters from some language options, take up more space, limiting the number of characters that can be sent in a single message.

With the short message service (SMS) you can send and receive text messages and receive messages that can contain pictures (network service).

Before you can send any text message, you must save your message center number. See "Message settings," p. 31.

To check SMS e-mail service availability and to subscribe to the service, contact your service provider. You can save an e-mail address in **Contacts**. See "Save details," p. 33.


## Write and send a text message

1. Select **Menu** > **Messaging** > **Create message** > **Text message**.
2. Enter one or more phone numbers or e-mail addresses in the **To:** field. To retrieve a phone number or e-mail address, select **Add**.
3. For an SMS e-mail, enter a subject in the **Subject:** field.
4. Write your message in the **Message:** field.

An indicator at the top of the display shows the total number of characters left and the number of messages needed for sending. For example, 673/2 means that there are 673 characters left and that the message will be sent as a series of 2 messages.

5. To send the message, select **Send**. See "Message sending process," p. 23.

## Read and reply to a text message

1. To view a received message, select **Show**. To view it later, select **Exit**.
2. To read the message later, select **Menu** > **Messaging** > **Inbox**.  is shown if you have unread messages in the inbox.

3. To reply to a message, select **Reply** and the message type.
4. Create the reply message.
5. To send the message, select **Send**. See "Message sending process," p. 23.

## Multimedia messages

Only devices that have compatible features can receive and display multimedia messages. The appearance of a message may vary depending on the receiving device.

The wireless network may limit the size of MMS messages. If the inserted picture exceeds this limit, the device may make it smaller so that it can be sent by MMS.

A multimedia message can contain text and objects such as images, sound clips, or video clips.

To check availability and to subscribe to the multimedia messaging service (MMS), contact your service provider. See "Message settings," p. 31.

## Write and send a multimedia message

1. Select **Menu** > **Messaging** > **Create message** > **Multimedia**.
2. Create your message.

Your device supports multimedia messages that contain several pages (slides). A message can contain a calendar note and a business card as attachments. A slide can contain text, one image,

- and one sound clip; or text and a video clip. To insert a slide in the message, select **New**; or select **Options > Insert > Slide**. To insert a file in the message, select **Insert**.
3. To view the message before sending it, select **Options > Preview**.
  4. To send the message, select **Send**.
  5. Enter one or more phone numbers or e-mail addresses in the **To:** field. To retrieve a phone number or e-mail address, select **Add**.
  6. Enter a subject in the **Subject:** field.
  7. To send the message, select **Send**. See "Message sending process," p. 23.

## Write and send a multimedia plus message

Any content can be added to the multimedia plus message. Such content might be images, video clips, sound clips, business cards, calendar notes, themes, streaming links, or even unsupported files (for example, files received with an e-mail).

1. Select **Menu > Messaging > Create message > Multimedia plus**.
2. Enter one or more phone numbers or e-mail addresses in the **To:** field. To retrieve a phone number or e-mail address, select **Add**.
3. Enter a subject and write your message.
4. To insert a file in the message, select **Insert** or **Options > Insert** and the file type.

5. To view the message before sending it, select **Options > Preview**.
6. To send the message, select **Send**. See "Message sending process," p. 23.

## Read and reply to a multimedia message



**Important:** Exercise caution when opening messages. E-mail messages or multimedia message objects may contain malicious software or otherwise be harmful to your device or PC.

1. To view the received message, select **Show**. To view it later, select **Exit**.
2. To view the whole message if the received message contains a presentation, select **Play**. To view the files in the presentation or the attachments, select **Options > Objects** or **Attachments**.
3. To reply to the message, select **Options > Reply** and the message type.
4. Create the reply message.
5. To send the message, select **Send**. See "Message sending process," p. 23.

## Message sending process

To send the message, select **Send**. The phone saves the message in the **Outbox** folder, and the sending starts.



**Note:** Your device may indicate that your message was sent to the message center number programmed into your device. Your device may not indicate whether the message is received at the intended destination. For more details about messaging services, contact your service provider.

If an interruption occurs while the message is being sent, the phone tries to resend the message a few times. If these attempts fail, the message remains in the **Outbox** folder. To cancel the sending of the messages in the **Outbox** folder, scroll to the desired message, and select **Options** > **Cancel sending**.

## Postcards

With the postcard messaging service (network service), create and send postcards that may contain an image and a greeting text. The postcard is sent to the service provider using multimedia messaging. The service provider prints the postcard and sends it to the postal address given with the message. MMS must be activated before this service can be used.

Before you can use the postcard service, you must subscribe to the service. To check the availability and costs and to subscribe to the service, contact your service provider.

To send a postcard, select **Menu** > **Messaging** > **Create message** > **Postcard**. Fill in the address; mandatory editor fields are marked by a \*. Scroll to the image field, select **Insert** and an image from the gallery, or **New image** to insert a recent image; then write your greeting text. To send the message, select **Send**.

## Flash messages

Flash messages are text messages that are instantly displayed upon reception. Flash messages are not automatically saved.

### Write a flash message

Select **Menu** > **Messaging** > **Create message** > **Flash message**. Enter the recipient's phone number and write your message. The maximum length of a flash message is 70 characters. To insert a blinking text into the message, select **Options** > **Insert blink char.** to set a marker. The text after the marker blinks. To end the blinking text range, insert a second marker.

### Read and reply to a flash message

A received flash message is indicated with **Message:** and a few words from the beginning of the message.

To read the message, select **Read**.

To extract numbers and addresses from the current message, select **Options** > **Use detail**.

To save the message, select **Save** and the folder in which you want to save it.



# Nokia Xpress audio messaging

You can use the MMS to create and send an audio message in a convenient way. MMS must be activated before you can use audio messages.

## Create a message

1. Select **Menu** > **Messaging** > **Create message** > **Audio message**. The voice recorder opens. See "Voice recorder," p. 52.
2. Speak your message.
3. Enter one or more phone numbers in the **To:** field, or select **Add** to retrieve a number.
4. To send the message, select **Send**.

## Listen to a message

To open a received audio message, select **Play**.

If more than one message is received, select **Show** > **Play**.

To listen to the message later, select **Exit**.

## Memory full

When you receive a message, and the memory for the messages is full, **Memory full. Unable to receive msgs.** is displayed.

To delete old messages, select **OK** > **Yes** and the folder. Scroll to the desired message, and select **Delete**.

To delete more messages, select **Mark**. Mark all the messages you want to delete, and select **Options** > **Delete marked**.

## Folders

The device saves received messages in the **Inbox** folder. Messages that have not yet been sent are saved in the **Outbox** folder.

To set the device to save the sent messages in the **Sent items** folder, select **Menu** > **Messaging** > **Message settings** > **General settings** > **Save sent messages**.

To edit and send messages that you have written and saved in the drafts folder, select **Menu** > **Messaging** > **Drafts**.

You can move messages to the **Saved items** folder. To organize your **Saved items** subfolders, select **Menu** > **Messaging** > **Saved items**.

To add a folder, select **Options** > **Add folder**.

To delete or rename a folder, scroll to the desired folder, and select **Options** > **Delete folder** or **Rename folder**.

To create a new template, save a message as a template, or access the template list, and select **Menu** > **Messaging** > **Saved items** > **Templates**.

## E-mail application

The e-mail application uses a packet data connection (network service) to allow you to access your e-mail account. This e-mail application is different from the SMS e-mail function. To use the e-mail function on your device, you need a compatible e-mail system.

You can write, send, and read e-mail with your device. Your device supports POP3 and IMAP4 e-mail servers. This application does not support keypad tones.

Before you can send and retrieve any e-mail messages, you must obtain a new e-mail account or use your current account. To check the availability of your e-mail account, contact your e-mail service provider.

Check your e-mail settings with your e-mail service provider. You may receive the e-mail configuration settings as a configuration message. See "Configuration setting service," p. 9.

To activate the e-mail settings, select **Menu > Messaging > Message settings > E-mail messages**. See "E-mail messages," p. 32.

## Setting wizard

The setting wizard starts automatically if no e-mail settings are defined in the phone.

To enter the settings manually, select **Menu > Messaging > E-mail > Options > Manage accounts**, and select **New accounts**, or select **Options > New**. The options for **Manage accounts** allow you to add, delete, and change the e-mail settings. Make sure that you have defined the correct

preferred access point for the operator. See "Configuration," p. 44.

The e-mail application may requires an internet access point without a proxy. WAP access points normally include a proxy and may do not work with the e-mail application.

## Write and send an e-mail

You can write your e-mail message before connecting to the e-mail service; or connect to the service first, then write and send your e-mail.

1. Select **Menu > Messaging > E-mail > Write new e-mail**.
2. If more than one e-mail account is defined, select the account from which you want to send the e-mail.
3. Enter the recipient's e-mail address, write the subject, and enter the e-mail message. To attach a file from **Gallery**, select **Options > Attach file**.
4. To send the e-mail message, select **Send > Send now**.

To save the e-mail in the **Outbox** folder to be sent later, select **Send > Send later**.

To edit or continue writing your e-mail later, select **Options > Save as draft**. The e-mail is saved in **Outboxes > Drafts**.

To send the e-mail later, select **Menu > Messaging > E-mail > Options > Send E-mail or Send/check e-mail**.

## Download e-mail

To download e-mail messages that have been sent to your e-mail account, select **Menu** > **Messaging** > **E-mail** > **Check new e-mail**. If more than one e-mail account is defined, select the account from which you want to download the e-mail. The e-mail application only downloads e-mail headers at first. Select **Back** > **Inboxes**, the account name, the new message, and **Retrieve** to download the complete e-mail message.

To download new e-mail messages and to send e-mail that has been saved in the **Outbox** folder, select **Options** > **Send/check e-mail**.

## Read and reply to e-mail



**Important:** Exercise caution when opening messages. E-mail messages or multimedia message objects may contain malicious software or otherwise be harmful to your device or PC.

1. Select **Menu** > **Messaging** > **E-mail** > **Inboxes**, the account name, and the desired message.
2. To reply to an e-mail, select **Reply** > **Original text** or **Empty message**. To reply to many, select **Options** > **Reply to all**. Confirm or edit the e-mail address and subject; then write your reply.
3. To send the message, select **Send** > **Send now**.

## E-mail folders

Your phone saves e-mail that you have downloaded from your e-mail account in **Inboxes**. **Inboxes** contains

the following folders: “Account name” for incoming e-mail, **Archive** for archiving e-mail, **Custom 1—Custom 3** for sorting e-mail, **Junk** where all spam e-mail is stored. **Outboxes** contains the following folders: **Drafts** for saving unfinished e-mail, **Outbox** for saving e-mail that has not been sent, and **Sent items** that has been sent.

To manage the folders and their e-mail content, select **Options** to view the available options of each folder.

## Spam filter

The spam filter allows you to put specific senders on a black or white list. Black list sender messages are filtered to **Junk**. Unknown and white list sender messages are downloaded into the account inbox.

To activate and define a spam filter, select **Options** > **Spam filter** > **Settings** in the main e-mail idle screen.

To blacklist a sender, select the e-mail message in the **Inboxes** folder and **Options** > **Blacklist sender**.

## Instant messages



**Note:** Depending on your IM service, you may not have access to all of the features described in this guide.

With instant messaging (IM) (network service) you can send short, simple text messages to online users. You have to subscribe to a service and register with the IM service you want to use. For more information about signing up for IM services, contact your service provider.

To set the required settings for the IM service, use the option **Connect. settings**. See "Access," p. 28.

The icons and texts on the display may vary, depending on the IM service.

## Access

Select **Menu > Messaging > Instant messages**.

**Instant messages** may be replaced by another term depending on the service provider. If more than one set of connection settings for IM service is available, select the one you want.

Select from the following options:

- **Login** — to connect to the IM service. To set the phone to automatically connect to the IM service when you switch on the phone, in the login session, select **Automatic login: > On**.
- **Saved convers.** — to view, erase, or rename the conversations that you saved during an IM session
- **Connect. settings** — to edit the settings needed for messaging and presence connection

## Connect

To connect to the service, access the instant messages menu, select the IM service, if needed, and **Login**.

To disconnect from the IM service, select **Options > Logout**.

## Sessions

When connected to the service, your status, as seen by others, is shown in a status line: **Status: Online, My status: Busy**, or **Status: App. off**. To change your own status, select **Change**.

Below the status line there are three folders containing your contacts that show their status: **Conversations, Online 0**, and **Offline 0**. To expand the folder, scroll to it, and select **Expand** (or scroll right).

To collapse the folder, select **Collapse** (or scroll left).

- **Conversations** — shows the list of new and read instant messages or invitations to IM during the active IM session:

 indicates a new group message

 indicates a read group message

 indicates a new instant message

 indicates a read instant message

 indicates an invitation

The icons and texts on the display depends on the IM service.

- **Online 0** — shows the number of contacts that are online
- **Offline 0** — shows the number of contacts that are offline

To start a conversation, expand the online or the offline folder, scroll to the contact with whom you want to chat, and select **Chat**. To answer an invitation or reply to a message, expand the

**Conversations** folder, scroll to the contact to whom you want to chat, and select **Open**.

- **Groups > Public groups** — List of bookmarks to public groups provided by the service provider (not visible if groups are not supported by the network). To start an IM session with a group, scroll to a group, and select **Join**. Enter the screen name that you want to use as your nickname in the conversation. When you have successfully joined the group conversation, you can start a group conversation. You can create a private group. See "Groups," p. 30.
- **Search > Users or Groups** — to search for other IM users or public groups on the network by phone number, screen name, e-mail address, or name. If you select **Groups**, you can search for a group by a member in the group, group name, topic, or ID.
- **Options > Chat or Join group** — to start the conversation when you have found the user or the group that you want

## Accept or reject an invitation

If you receive a new invitation, to read it, select **Read**. If more than one invitation is received, select an invitation and **Open**. To join the private group conversation, select **Accept**, and enter the screen name you want to use as your nickname. To reject or delete the invitation, select **Options > Reject or Delete**.

## Read an instant message


If you receive a new message that is not a message associated with an active conversation, **New instant message** is displayed. To read it, select **Read**. If more

than one message is received, select a message and **Open**.

New messages received during an active conversation are held in **Instant messages > Conversations**. If you receive a message from someone who is not in **IM contacts**, the sender ID is displayed. To save a new contact that is not in the phone memory, select **Options > Save contact**.

## Participate in a conversation

To join or start an IM session, write your message, and select **Send**.

If you receive a new message during a conversation from a person who is not taking part in the current conversation,  is displayed, and the phone sounds an alert tone. Write your message, and select **Send**. Your message is displayed, and the reply message is displayed below your message.

## Add IM contacts

When connected to the IM service, in the IM main menu, select **Options > Add contact > By mobile number**, **Enter ID manually**, **Search from serv.**, or **Copy from server** (depending on the service provider). To start a conversation, scroll to a contact, and select **Chat**.

## Block or unblock messages

When you are in a conversation and want to block messages, select **Options > Block contact**.

To block messages from a specific contact in your contacts list, scroll to the contact in **Conversations**, and select **Options** > **Block contact** > **OK**.

To unblock a contact, in the IM main menu, select **Options** > **Blocked list**. Scroll to the contact you want to unblock, and select **Unblock** > **OK**.

## Groups

You can use the public groups provided by the service provider or create your own private groups for an IM conversation.

You can bookmark public groups that your service provider may maintain. Connect to the IM service, and select **Groups** > **Public groups**. Select a group and **Join**. If you are not in the group, enter your screen name as your nickname for the group.

To delete a group from your list, select **Options** > **Delete group**.

To search for a group, select **Groups** > **Public groups** > **Search groups**.


To create a private group, connect to the IM service, and, from the main menu, select **Options** > **Create group**. Enter the name for the group and the screen name that you want to use as your nickname. Mark the private group members in the contacts list, and write an invitation.

## Voice messages

The voice mailbox is a network service to which you may need to subscribe. For more information, contact your service provider.

To call your voice mailbox, select **Menu** > **Messaging** > **Voice messages** > **Listen to voice messages**.

To enter, search for, or edit your voice mailbox number, select **Voice mailbox number**.

If supported by the network,  indicates new voice messages. To call your voice mailbox number, select **Listen**.

## Info messages

You can receive messages on various topics from your service provider (network service). For more information, contact your service provider.

Select **Menu** > **Messaging** > **Info messages** and from the available options.

## Service commands

Service commands allow you to write and send service requests (USSD commands) to your service provider, such as activation commands for network services.

To write and send the service request, select **Menu** > **Messaging** > **Service commands**. For details, contact your service provider.

## Delete messages

Delete a single message, all messages, or a folder.

To delete messages, select **Menu > Messaging > Delete messages > By message** to delete a single message, **By folder** to delete all messages from a folder, or **All messages**.

## SIM messages

SIM messages are specific text messages that are saved to your SIM card.

You can copy or move those messages from the SIM to the phone memory, but not vice versa.

To read SIM messages, select **Menu > Messaging > Options > SIM messages**.

## Message settings

### General settings

General settings are common for text and multimedia messages.

Select **Menu > Messaging > Message settings > General settings** and from the following options:

- **Save sent messages** — Select **Yes** to save the sent messages in the **Sent items** folder.

- **Font size** — Select the font size used in messages.
- **Graphical smileys** — Select **Yes** to set the device to replace character-based smileys with graphical ones.

### Text messages

The text message settings affect the sending, receiving, and viewing of text and SMS e-mail messages.

Select **Menu > Messaging > Message settings > Text messages** and from the following options:

- **Delivery reports** — Select **Yes** to ask the network to send delivery reports about your messages (network service).
- **Message centres** — Select **Add centre** to set the phone number and name of the message center that is required for sending text messages. You receive this number from your service provider.
- **Message centre in use** — to select the message center in use.
- **E-mail message centres** — Select **Add centre** to set the phone numbers and name of the e-mail center for sending SMS e-mail.
- **E-mail centre in use** — to select the SMS e-mail message center in use
- **Message validity** — to select the length of time for which the network attempts to deliver your message
- **Messages sent via** — to select the format of the messages to be sent: **Text**, **Paging**, or **Fax** (network service)

- **Use packet data** — Select **Yes** to set GPRS as the preferred SMS bearer.
- **Character support** — Select **Full** to select all characters in the messages to be sent as viewed. If you select **Reduced**, characters with accents and other marks may be converted to other characters.
- **Reply via same centre** — Select **Yes** to allow the recipient of your message to send you a reply using your message center (network service).

## Multimedia messages

The message settings affect the sending, receiving, and viewing of multimedia messages.

You may receive the configuration settings for multimedia messaging as a configuration message. See "Configuration setting service," p. 9. You can also enter the settings manually. See "Configuration," p. 44.

Select **Menu > Messaging > Message settings > Multimedia msgs.** and from the following options:

- **Delivery reports** — Select **Yes** to ask the network to send delivery reports about your messages (network service).
- **Image size (multimedia plus)** — to set the image size in multimedia plus messages
- **Image size (multimedia)** — to set the image size in multimedia messages
- **Default slide timing** — to define the default time between slides in multimedia messages
- **Allow multimedia reception** — Select **Yes** or **No** to receive or block the multimedia message. If you

- select **In home network**, you cannot receive multimedia messages when outside your home network. The default setting of the multimedia message service is generally **In home network**. The availability of this menu depends on your phone.
- **Incoming multi-media messages** — to allow the reception of multimedia messages automatically, manually after being prompted, or to reject the reception. This setting is not shown if **Allow multimedia reception** is set to **No**.
  - **Allow adverts** — to receive or reject advertisements. This setting is not shown if **Allow multimedia reception** is set to **No**, or **Incoming multi-media messages** is set to **Reject**.
  - **Configuration settings** — Select **Configuration** to display the configurations that support multimedia messaging. Select a service provider, **Default**, or **Personal config.** for multimedia messaging. Select **Account** and an MMS account contained in the active configuration settings.

## E-mail messages

The settings affect sending, receiving, and viewing e-mail. You may receive the settings as a configuration message. See "Configuration setting service," p. 9. You can also manually enter the settings. See "Configuration," p. 44.


Select **Menu > Messaging > Message settings > E-mail messages** to display the options.



# Contacts

You can save names and phone numbers (contacts) in the device memory and in the SIM card memory.

The device memory can save contacts with additional details, such as various phone numbers and text items. You can also save an image for a limited number of contacts.

The SIM card memory can save names with one phone number attached to them. The contacts saved in the SIM card memory are indicated by .

## Save names and phone numbers


Names and numbers are saved in the used memory.

To save a name and phone number, select **Menu** > **Contacts** > **Names** > **Options** > **Add new contact**.

## Save details

In the device memory you can save different types of phone numbers, a tone or a video clip, and short text items for a contact.

The first number you save is automatically set as the default number and is indicated with a frame around

the number type indicator (for example, ). When you select a name from contacts (for example, to make a call), the default number is used unless you select another number.

Make sure that the memory in use is **Phone** or **Phone and SIM**. See "Settings," p. 33.

Search for the contact to add a detail, and select **Details** > **Options** > **Add detail**.

Select from the available options.

## Settings

These settings define where the contact information is stored, how it is displayed, and how much memory remains.

Select **Menu** > **Contacts** > **Settings** and from the following options:

- **Memory in use** — to select the SIM card or phone memory for your contacts. Select **Phone and SIM** to recall names and numbers from both memories. In that case, when you save names and numbers, they are saved in the phone memory.
- **Contacts view** — to select how the names and numbers in **Contacts** are displayed

- **Name display** — to select whether the contact's first or last name is displayed first
- **Font size** — to set the font size for the list of contacts
- **Memory status** — to view the free and used memory capacity

## Groups

Select **Menu > Contacts > Groups** to arrange the names and phone numbers saved in the memory into caller groups with different ringing tones and group images.

## Search for a contact

Select **Menu > Contacts > Names** and scroll through the list of contacts, or enter the first characters of the name to search.

## Copy or move contacts

To copy or move a contact between the SIM card memory and the phone memory, select **Menu > Contacts > Names**. Select the contact to copy or move and **Options > Copy contact** or **Move contact**.

To copy or move several contacts, select the first contact to copy or move and **Options > Mark**. Mark the other contacts, and select **Options > Copy marked** or **Move marked**.

To copy or move all contacts between the SIM card memory and the phone memory, select **Menu > Contacts > Copy contacts** or **Move contacts**.

The SIM card memory can save names with one phone number attached to them.

## Edit contact details

Search for the contact, and select **Details**.

To edit a name, number, or text item or to change the image, select **Options > Edit**.

To change the number type, scroll to the desired number, and select **Options > Change type**. To set the selected number as the default number, select **Options > Set as default**.

## Delete contacts

To delete a contact, search for the desired contact, and select **Options > Delete contact**.

To delete all the contacts and the details attached to them from the phone or SIM card memory, select **Menu > Contacts > Delete all contacts > From phone mem.** or **From SIM card**.

To delete a number, text item, or an image attached to the contact, search for the contact, and select **Details**. Scroll to the desired detail, and select **Options > Delete** and from the available options.

## Synchronize all

Synchronize your calendar, contacts data, and notes with a remote internet server (network service). See "Synchronize from a server," p. 42.

## Business cards

You can send and receive a person's contact information from a compatible device that supports the vCard standard as a business card.

To send a business card, search for the contact, and select **Details** > **Options** > **Send bus. card**.

When you receive a business card, select **Show** > **Save** to save the business card in the phone memory. To discard the business card, select **Exit** > **Yes**.

## Dialing shortcuts

Your device can dial a phone number with one keypress. The number keys, 2 to 9, can have a phone number assigned to them. To assign a phone number to a number key, select **Menu** > **Contacts** > **Speed dials**, and scroll to the number to assign as the shortcut for **Speed dialling**.

Select **Assign**, or if a number has already been assigned to the key, select **Options** > **Change**.

Select **Search** and the contact to assign the shortcut. If **Speed dialling** is off, the phone asks whether you want to activate it.

To make a call using the shortcuts, press and hold the corresponding key. See "Dialing shortcuts," p. 18.

## Info, service, and my numbers

Select **Menu** > **Contacts** and from one of these submenus:

- **Info numbers** — to call the information numbers of your service provider if the numbers are included on your SIM card (network service)
- **Service numbers** — to call the service numbers of your service provider, if the numbers are included on your SIM card (network service)
- **My numbers** — to view the phone numbers assigned to your SIM card, if the numbers are included on your SIM card.

These functions are SIM card support required.

## Call log

The device registers your missed, received, and dialed calls if the network supports it and the device is switched on and within the network service area.

To view the information on your calls, select **Menu > Log > Missed calls, Received calls, or Dialed numbers**.

To view your recent missed and received calls and the dialed numbers chronologically, select **Call log**. To view the contacts to whom you most recently sent messages, select **Message recipients**.

To view the approximate information on your recent communications, select **Menu > Log > Call duration, Packet data counter, or Packet data conn. timer**.

To view how many text and multimedia messages you have sent and received, select **Menu > Log > Message log**.



**Note:** The actual invoice for calls and services from your service provider may vary, depending on network features, rounding off for billing, taxes, and so forth.



**Note:** Some timers, including the life timer, may be reset during service or software upgrades.

## Positioning

The network may send you a position request (network service). Contact your service provider to subscribe and to agree upon the delivery of positioning information.

To accept or reject the position request, select **Accept or Reject**. If you miss the request, the phone automatically accepts or rejects it according to what

you have agreed with your network operator or service provider. The phone displays **1 missed position request**. To view the missed positioning request, select **Show**.

To view the information on the 10 most recent privacy notifications and requests or to delete them, select

**Menu** > **Log** > **Positioning** > **Position log** > **Open folder** or **Delete all**.

# Settings

## Profiles

Your phone has various setting groups called profiles, for which you can customize the phone tones for different events and environments.

Select **Menu** > **Settings** > **Profiles**, the desired profile, and from the following options:

- **Activate** — to activate the selected profile
- **Personalise** — to personalize the profile. Select the setting you want to change, and make the changes.
- **Timed** — to set the profile to be active until a certain time (up to 24 hours) and set the end time. When the time set for the profile expires, the previous profile that was not timed becomes active.

## Themes

A theme contains elements for personalizing your device.

Select **Menu** > **Settings** > **Themes** and from the following options:

- **Select theme** — to set a theme. A list of folders in **Gallery** opens. Open the **Themes** folder, and select a theme.
- **Theme downloads** — to open a list of links to download more themes

## Tones

You can change the tone settings of the selected active profile.

Select **Menu** > **Settings** > **Tones**. You can find the same settings in the **Profiles** menu. See "Profiles," p. 37.

To set the phone to only ring for calls from phone numbers that belong to a selected caller group, select **Alert for**.

Select **Options** > **Save** to save the settings or **Cancel** to leave the settings unchanged.

If you select the highest ringing tone level, the ringing tone reaches its highest level after a few seconds.

## Display

Select **Menu** > **Settings** > **Display** and from the available options:

- **Wallpaper** — to add the background image in the Main screen in standby mode
- **Active standby** — to switch the active standby mode on or off and to organize and personalize the active standby mode
- **Standby mode font colour** — to select the color for the texts in the standby mode
- **Navigation key icons** — to display the icons of the current navigation key shortcuts in the standby mode when active standby is off
- **Screen saver** — to set your device to display a screen saver. To download more screen savers, select **Graphic downloads**. To set the time after which the screen saver is activated, select **Time-out**.
- **Power saver** — to save some battery power. The date and a digital clock are displayed when no function of the device is used for a certain time.
- **Sleep mode** — to save some battery power
- **Font size** — to set the font size for messaging, contacts, and web pages
- **Operator logo** — to set your device to display or hide the operator logo
- **Cell info display** — to display the cell identity, if available from the network

## Time and date

To change the clock type, time, time zone, and date settings, select **Menu** > **Settings** > **Time and date** > **Time**, **Date**, or **Auto-update of date & time** (network service).

When traveling to a different time zone, select **Menu** > **Settings** > **Time and date** > **Time** > **Time zone** and the time zone of your location in terms of the time difference with respect to Greenwich mean time (GMT) or coordinated universal time (UTC). The time and date are set according to the time zone and enable your device to display the correct sending time of received text or multimedia messages.

For example, GMT +8 denotes the time zone for Singapore, Malaysia, and Philippines, 8 hours east of Greenwich/London (UK).

## My shortcuts

With personal shortcuts you get quick access to often used functions of the device.

## Left selection key

To select a function from the list, select **Menu** > **Settings** > **My shortcuts** > **Left selection key**.

If the left selection key is **Go to** to activate a function, in the standby mode, select **Go to** > **Options** and from the following options:

- **Select options** — to add a function to the shortcut list or to remove one
- **Organise** — to rearrange the functions on your personal shortcut list

## Right selection key

To select a function from the list, select **Menu** > **Settings** > **My shortcuts** > **Right selection key**.

## Navigation key


To assign other device functions from a predefined list to the navigation key, select **Menu** > **Settings** > **My shortcuts** > **Navigation key**.

## Voice commands

Call contacts and carry out device functions by speaking a voice command.

Voice commands are language-dependent, and you must set the **Voice recognition language** before using voice commands. See "Phone," p. 43.

To select the device function to activate with a voice command, select **Menu** > **Settings** > **My shortcuts** > **Voice commands** and a folder. Scroll to a function.

 indicates that the voice tag is activated. To activate the voice tag, select **Add**. To play the activated voice command, select **Play**. See "Enhanced voice dialing," p. 19.

To manage the voice commands, scroll to a device function, and select **Options** and from the following:

- **Edit** or **Remove** — to change or deactivate the voice command of the selected function
- **Add all** or **Remove all** — to activate or deactivate voice commands to all functions in the voice commands list

## Infrared

You can set up the phone to send and receive data through its infrared (IR) port to or from a IRDA compatible phone or data device.



Do not point the infrared (IR) beam at anyone's eye or allow it to interfere with other IR devices. This device is a Class 1 laser product.

When sending or receiving data, ensure that the IR ports of the sending and receiving devices are pointing at each other and that there are no obstructions between the devices.

To activate or deactivate the IR port of your phone, select **Menu** > **Settings** > **Connectivity** > **Infrared**.

If the data transfer is not started within 2 minutes after the activation of the IR port, the connection is cancelled and must be started again.

### IR connection indicator

- When  is shown continuously, the IR connection is activated, and your phone is ready to send or receive data through its IR port.
- When  blinks, your phone is trying to connect to the other device, or a connection has been lost.

# Bluetooth

## Bluetooth wireless technology

Bluetooth technology allows you to connect the device to a compatible Bluetooth device within 10 meters (32 feet). Since devices using Bluetooth technology communicate using radio waves, your device and the other devices do not need to be in direct line-of-sight, although the connection can be subject to interference from obstructions such as walls or from other electronic devices.


This device is compliant with Bluetooth Specification 2.0 + EDR supporting the following profiles: generic access, network access, generic object exchange, advanced audio distribution, audio video remote control, hands-free, headset, object push, file transfer, dial-up networking, SIM access, and serial port. To ensure interoperability between other devices supporting Bluetooth technology, use Nokia approved enhancements for this model. Check with the manufacturers of other devices to determine their compatibility with this device.

There may be restrictions on using Bluetooth technology in some locations. Check with your local authorities or service provider.

Features using Bluetooth technology, or allowing such features to run in the background while using other features, increase the demand on battery power and reduce the battery life.

## Set up a Bluetooth connection

Select **Menu** > **Settings** > **Connectivity** > **Bluetooth** and from the following options:

- **Bluetooth** — Select **On** to activate the Bluetooth function.  indicates that Bluetooth is activated.
- **My phone's visibility** — to define how your device is shown to other Bluetooth devices
- **Search for audio enhancements** — to search for compatible Bluetooth audio devices. Select the device that you want to connect to the phone.
- **Active devices** — to check which Bluetooth connection is currently active
- **Paired devices** — to search for any Bluetooth device in range. Select **New** to list any Bluetooth device in range. Select a device and **Pair**. Enter an agreed Bluetooth passcode of the device (up to 16 characters) to pair the device to your device. You must only give this passcode when you connect to the device for the first time. Your device connects to the other device, and you can start data transfer.
- **My phone's name** — to set the device name for Bluetooth connections

If you are concerned about security, turn off the Bluetooth function, or set **My phone's visibility** to **Hidden**. Always accept only Bluetooth communication from others whom you trust.

## Packet data

General packet radio service (GPRS) is a network service that allows mobile devices to send and receive data over an internet protocol (IP)-based network.



To define how to use the service, select **Menu > Settings > Connectivity > Packet data > Packet data connection** and from the following options:

- **When needed** — to set the packet data connection to established when an application needs it. The connection will be closed when the application is terminated.
- **Always online** — to set the device to automatically connect to a packet data network when you switch the device on.

You can connect the device using Bluetooth wireless technology or USB data cable connection to a compatible PC and use the device as a modem to enable GPRS connectivity from the PC.

To define the settings for connections from your PC, select **Menu > Settings > Connectivity > Packet data > Packet data settings > Active access point**, and activate the access point you want to use. Select **Edit active access point > Alias for access point**, enter a name to change the access point settings, and select **OK**. Select **Packet data access point**, enter the access point name (APN) to establish a connection to a network, and select **OK**.

Establish an internet connection by using your phone as a modem. See "Nokia PC Suite," p. 65. If you have set the settings both on your PC and on your device, the PC settings are used.

## Data transfer

Synchronize your calendar, contacts data, and notes with another compatible device (for example, a mobile

device), a compatible PC, or a remote internet server (network service).

Your device allows data transfer with a compatible PC or another compatible device when using the device without a SIM card.

## Transfer contact list

To copy or synchronize data from your device, the name of the device and the settings must be in the list of transfer contacts. If you receive data from another device (for example, a compatible mobile device), the corresponding transfer contact is automatically added to the list, using the contact data from the other device. **Server sync** and **PC sync** are the original items in the list.

To add a new transfer contact to the list (for example, a mobile device), select **Menu > Settings > Connectivity > Data transfer > Options > Add contact > Phone sync** or **Phone copy**, and enter the settings according to the transfer type.

To edit the copy and synchronize settings, select a contact from the transfer contact list and **Options > Edit**.

To delete a transfer contact, select it from the transfer contact list and **Options > Delete**.

## Data transfer with a compatible device

For synchronization use Bluetooth wireless technology or a cable connection. The other device must be activated for receiving data.

To start data transfer, select **Menu > Settings > Connectivity > Data transfer** and the transfer contact from the list other than **Server sync** or **PC sync**.

According to the settings, the selected data is copied or synchronized.

## Synchronize from a PC

To synchronize data from calendar, notes, and contacts, install the Nokia PC Suite software of your device on a compatible PC. Use Bluetooth wireless technology or a USB data cable to connect your device with the PC and start the synchronization from the PC.

## Synchronize from a server

To use a remote internet server, subscribe to a synchronization service. For more information and the settings required for this service, contact your service provider. You may receive the settings as a configuration message. See "Configuration setting service," p. 9.

1. To start the synchronization from your device, select **Menu > Settings > Connectivity > Data transfer > Server sync**.

2. Depending on the settings, select **Initialising sync** or **Initialising copy**.

Synchronizing for the first time or after an interrupted synchronization may take up to 30 minutes to complete.

## USB data cable

You can use the USB data cable to transfer data between the device and a compatible PC or a printer supporting PictBridge. You can also use the USB data cable with Nokia PC Suite.

To activate the device for data transfer or image printing, connect the data cable. Confirm "**USB data cable connected. Select mode.**" and select from the following options:

- **Nokia mode** — to use the cable for PC Suite
- **Printing & media** — to use the device with a PictBridge compatible printer or with your compatible PC
- **Data storage** — to connect to a PC that does not have Nokia software and use the device as a data storage device

To change the USB mode, select **Menu > Settings > Connectivity > USB data cable** and the desired USB mode.

## Call

Select **Menu > Settings > Call** and from the following options:

- **Call divert** — to divert your incoming calls (network service). You may not be able to divert your calls if some call barring functions are active. See "Security," p. 44.
- **Voice clarity** — Select **Active** to enhance speech intelligibility especially in noisy environments.
- **Anykey answer** — Select **On** to answer an incoming call by briefly pressing any key, except the power key, the left and right selection keys, or the end key.
- **Automatic redial** — Select **On** to make a maximum of 10 attempts to connect the call after an unsuccessful call attempt.
- **Speed dialling** — Select **On** to dial the names and phone numbers assigned to the number keys 2 to 9 by pressing and holding the corresponding number key.
- **Call waiting** — Select **Activate** to have the network notify you of an incoming call while you have a call in progress (network service). See "Answer or reject a call," p. 19.
- **Summary after call** — Select **On** to briefly display the approximate duration after each call.
- **Send my caller ID** — Select **Yes** to show your phone number to the person you are calling (network service). To use the setting agreed upon with your service provider, select **Set by network**.
- **Line for outgoing calls** — to select the phone line 1 or 2 for making calls if supported by your SIM card (network service)

## Phone

Select **Menu** > **Settings** > **Phone** and from the following options:

- **Language settings** — To set the display language of your device, select **Phone language**. **Automatic** selects the language according to the information on the SIM card. To select the USIM card language, select **SIM language**. To set a language for the voice playback, select **Voice recognition language**. See "Enhanced voice dialing," p. 19.
- **Security keyguard** — To set the device to ask for the security code when you unlock the keyguard. Enter the security code, and select **On**.
- **Automatic keyguard** — to lock the keypad automatically after a preset time delay when the device is in the standby mode and no function of the device has been used. Select **On**, and set the time.
- **Welcome note** — to write the note that is shown when the device is switched on
- **Flight query** — The device asks every time when it is switched on whether you want to use the flight profile. With the flight profile, all radio connections are switched off. The flight profile should be used in areas sensitive to radio emissions.
- **Phone updates** — to receive software updates from your service provider (network service). This option may not be available, depending on your device and network.
- **Operator selection** — Select **Automatic** to set the device to automatically select one of the cellular networks available in your area. With **Manual** you can select a network that has a roaming agreement with your service provider.
- **Confirm SIM service actions** — See "SIM services," p. 65.
- **Help text activation** — to select whether the device shows help texts

- **Start-up tone** — The device plays a tone when it is switched on.

## Enhancements

This menu or the following options are shown only if the device is or has been connected to a compatible mobile enhancement.

Select **Menu > Settings > Enhancements**. Select an enhancement, and depending on the enhancement, from the following options:

- **Default profile** — to select the profile that you want to be automatically activated when you connect to the selected enhancement
- **Automatic answer** — to set the device to answer an incoming call automatically after 5 seconds. If **Incom. call alert:** is set to **Beep once** or **Off**, automatic answer is off.
- **Lights** — to set the lights permanently **On**. Select **Automatic** to set the lights on for 15 seconds after a keypress.
- **Text phone** — Select **Use text phone > Yes** to use this setting instead of headset or loopset settings.

## Configuration

You can configure your device with settings that are required for certain services. Your service provider may also send you these settings. See "Configuration setting service," p. 9.

Select **Menu > Settings > Configuration** and from the following options:

- **Default configu- ration settings** — to view the service providers saved in the device. To set the configuration settings of the service provider as default settings, select **Options > Set as default**.
- **Activate default in all applications** — to activate the default configuration settings for supported applications
- **Preferred access point** — to view the saved access points. Scroll to an access point, and select **Options > Details** to view the name of the service provider, data bearer, and packet data access point or GSM dial-up number.
- **Connect to service provider support** — to download the configuration settings from your service provider (Availability depends on service provider)
- **Device manager settings** — to allow or prevent the device from receiving software updates. This option may not be available, depending on your device. See "Software updates over the air," p. 45.
- **Personal configu- ration settings** — to manually add new personal accounts for various services and to activate or delete them. To add a new personal account if you have not added any, select **Add new**; otherwise, select **Options > Add new**. Select the service type, and select and enter each of the required parameters. The parameters differ according to the selected service type. To delete or activate a personal account, scroll to it, and select **Options > Delete** or **Activate**.

## Security

When security features that restrict calls are in use (such as call barring, closed user group, and fixed dialing),

calls may be possible to the official emergency number programmed into your device.

Select **Menu > Settings > Security** and from the following options:

- **PIN code request** or **UPIN code request** — to set the device to ask for your PIN or UPIN code every time the device is switched on. Some SIM cards do not allow the code request to be turned off.
- **PIN2 code request** — to select whether the PIN2 code is required when using a specific device feature which is protected by the PIN2 code. Some SIM cards do not allow the code request to be turned off.
- **Call barring service** — to restrict incoming calls to and outgoing calls from your device (network service). A barring password is required.
- **Fixed dialling** — to restrict your outgoing calls to selected phone numbers if this function is supported by your SIM card. When the fixed dialling is on, GPRS connections are not possible except while sending text messages over a GPRS connection. In this case, the recipient's phone number and the message center number must be included in the fixed dialling list.
- **Closed user group** — to specify a group of people whom you can call and who can call you (network service)
- **Security level** — Select **Phone** to set the device to ask for the security code whenever a new SIM card is inserted into the device. If you select **Memory**, the device asks for the security code when the SIM card memory is selected, and you want to change the memory in use.
- **Access codes** — to change the security code, PIN code, UPIN code, PIN2 code, or barring password
- **Code in use** — to select whether the PIN code or UPIN code should be active
- **Authority certificates** or **User certificates** — to view the list of the authority or user certificates downloaded into your device. See "Certificates," p. 64.
- **Security module settings** — to view **Security module details**, activate **Module PIN request**, or change the module PIN and signing PIN. See "Access codes," p. 9.

## Restore factory settings

To reset some of the menu settings to their original values, select **Menu** > **Settings** > **Restore factory sett.**. Enter the security code.

The names and phone numbers saved in **Contacts** are not deleted.

## Operator menu

This menu lets you access a portal to services provided by your network operator. The name and the icon depend on the operator. For more information contact

your network operator. The operator can update this menu with a service message. See "Service inbox," p. 63.

# Gallery

Copyright protections may prevent some images, music (including ringing tones), and other content from being copied, modified, transferred or forwarded.

Manage images, video clips, music files, themes, graphics, tones, recordings, and received files. These files are stored in the device memory or an attached memory card and may be arranged in folders.

Your device supports an activation key system to protect acquired content. Always check the delivery terms of any content and activation key before acquiring them, as they may be subject to a fee.

## Folders and files

To see the list of folders, select **Menu** > **Gallery**.

To view the list of files in a folder, select a folder and **Open**.

To see the available options of a folder or a file, select a folder or a file and **Options**.

To view the folders of the memory card when moving a file, scroll to the memory card, and press the navigation key right.

## Print images

Your device supports to print images that are in the .jpg format. The images taken with the built-in camera are automatically saved in the .jpg format.

To connect your device to a compatible printer, use a data cable or send the image by Bluetooth to a printer supporting Bluetooth technology. See "PC connectivity," p. 65.

Select the image you want to print and **Options** > **Print**.

## Memory card



**Warning:** Keep all memory cards out of the reach of small children.


Use a memory card to store your multimedia files such as video clips, music tracks, sound files, images, and messaging data.

Some of the folders in **Gallery** with content that the device uses (for example, **Themes**) may be stored on the memory card.

To insert a memory card, see "Insert a microSD card", p. 12.

## Format the memory card

Some supplied memory cards are preformatted; others require formatting. Consult your retailer to find out if you must format the memory card before you can use it. When you format a memory card, all data on the card is permanently lost.

To format a memory card, select **Menu > Gallery** or **Applications**, the memory card folder , and **Options > Format mem. card > Yes**.

When formatting is complete, enter a name for the memory card.


## Lock the memory card

Set a password to lock your memory card against unauthorized use.

# Media

## Camera and video

Take images or record video clips with the built-in camera.

Select the memory card folder  and **Options > Set password**. The password can be up to eight characters long. The password is stored in your device, and you do not have to enter it again while you are using the memory card on the same device. If you want to use the memory card on another device, you are asked for the password.

To delete the password, select **Options > Delete password**.

## Check memory consumption

Check the memory consumption of different data groups and the available memory to install new applications or software on your memory card.

Select the memory card  and **Options > Details**.

## Take a picture

To use the still picture function, select **Menu > Media > Camera** or if the video function is on, scroll left or right.

To take a picture in landscape format, hold the device in a horizontal position. To zoom in and out in the



camera mode, scroll up and down or press the volume keys.

To take a picture, select **Capture**. The device saves the pictures on the memory card, if available, or on the phone memory.

Select **Options** to set **Night mode on** if the lighting is dim, **Self-timer on** to activate the self-timer, or **Img. sequence on** to take pictures in a fast sequence. With the highest picture size setting, three pictures are taken in a sequence; with other size settings, five pictures are taken.

Select **Options** > **Settings** > **Image preview time** and a preview time to display the taken pictures. During the preview time, select **Back** to take another picture or **Send** to send the picture as a multimedia message.

Your device supports a picture capture resolution up to 1280 x 1024 pixels.

## Record a video clip

To activate the video function, select **Menu** > **Media** > **Video**; or if the camera function is on, scroll left or right.

To start the video recording, select **Record**; to pause the recording, select **Pause**; to resume the recording, select **Continue**; to stop the recording, select **Stop**.

The device saves the video clips on the memory card, if available, or in the device memory.

## Camera and video options

To use a filter, select **Options** > **Effects** > **False colours**, **Greyscale**, **Sepia**, **Negative**, or **Solarise**.

To adapt the camera to the light conditions, select **Options** > **White balance** > **Auto**, **Daylight**, **Tungsten**, or **Fluorescent**.

To change other camera and video settings and to select the image and video storage, select **Options** > **Settings**.

## Media player

View, play, and download files, such as images, audio, video, and animated images; or view compatible streaming videos from a network server (network service).

Select **Menu** > **Media** > **Media player** > **Open Gallery**, **Bookmarks**, **Go to address**, or **Media downloads** to select or download media.

Select **Menu** > **Media** > **Media player** > **FF/Rew interval** to set the length of the interval for fast forward or rewind.

### Configuration for a streaming service

You may receive the configuration settings required for streaming as a configuration message from the service provider. See "Configuration setting service," p. 9. You can also enter the settings manually. See "Configuration," p. 44.

To activate the settings, do the following:

1. Select **Menu > Media > Media player > Streaming sett. > Configuration**.
2. Select a service provider, **Default**, or **Personal config.** for streaming.
3. Select **Account** and a streaming service account contained in the active configuration settings.

## Music player

Your device includes a music player for listening to music tracks or other MP3 or AAC sound files that you have downloaded from the web or transferred to the device with Nokia PC Suite. See "Nokia PC Suite," p. 65.

Music files stored in the music folder in the device memory or on the memory card are automatically detected, after the device is powered on, the music files are added to the music library during the startup of the music player.

To open the music player, select **Menu > Media > Music player**.

### Play music tracks



**Warning:** Listen to music at a moderate level. Continuous exposure to high volume may damage your hearing. Do not hold the device near your ear when the loudspeaker is in use, because the volume may be extremely loud.

Operate the music player with the virtual keys on the display.

When you open **Music player**, the details of the track are shown. To start playing, select **▷**.

To adjust the volume level, use the volume keys of the device.

To pause the playing, select **⏸**.

To skip to the next track, select **⏭**. To skip to the beginning of the previous track, select **⏮** twice.

To fast forward the current track, select and hold **⏭**. To rewind the current track, select and hold **⏮**. Release the key at the position you want.

To stop the music player, press and hold the end key.

## Music player options

In the music player menu, press **Options**, and select from the following options:

- **Show tracks** — View all available tracks of the active track list and play the desired track. To play a track, scroll to the desired track, and select **Play**.
- **Music library** — View all available tracks ordered according to **Artists**, **Albums**, **Genres**, **Composers**, or **Track lists**. Select **Update libr.** to refresh the lists. To find track lists generated with the Nokia Music Manager, select **Track lists > My tracks**.
- **Play options** — Select **Random** to play the tracks on the track list in random order. Select **Repeat** to play the current track or the entire track list repeatedly.
- **Media equaliser** — to select or define an equalizer setting

- **Add to Favourites** — to add the current track to the favorite track list
- **Play via Bluetooth** — to connect and play the tracks on an audio accessory using Bluetooth technology
- **Use tone** — Set the currently played music track, for example, as a ringing tone.
- **Send** — to send the current track by a multimedia message or using Bluetooth technology
- **Web page** — to access a web page associated with the currently played track, which is dimmed if no web page is available.
- **Music downloads** — to connect to a web service
- **Memory status** — to view the free and used memory capacity





## Radio

The FM radio depends on an antenna other than the wireless device antenna. A compatible headset or enhancement needs to be attached to the device for the FM radio to function properly.







**Warning:** Listen to music at a moderate level. Continuous exposure to high volume may damage your hearing. Do not hold the device near your ear when the loudspeaker is in use, because the volume may be extremely loud.

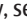

Select **Menu** > **Media** > **Radio**.

To use the graphical keys , , , or  on the display, scroll left or right to the desired key, and select it.

## Save radio frequencies

1. To start the search, select and hold  or . To change the radio frequency in 0.05 MHz steps, briefly press  or .
2. To save a frequency to a memory location, 1 to 9, press and hold the corresponding number key. To save a frequency to a memory location from 10 to 20, press briefly **1** or **2**, and press and hold the desired number key, **0** to **9**.
3. Enter the name of the radio station.

## Listen to the radio

Select **Menu** > **Media** > **Radio**. To scroll to the desired frequency, select  or , or press the headset key. To select a radio station, briefly press the corresponding number keys. To adjust the volume, press the volume keys.

Select from the following options:

- **Switch off** — to turn off the radio
- **Loudspeaker** or **Headset** — to listen to the radio using the loudspeaker or headset. Keep the headset connected to the device. The lead of the headset functions as the radio antenna.
- **Mono output** or **Stereo output** — to listen to the radio in monophonic sound or in stereo
- **Stations** — to select the list of saved stations. To delete or rename a station, scroll to the desired station, and select **Options** > **Delete station** or **Rename**.
- **Search all stations** — to automatically search the available stations at your location






- **Set frequency** — to enter the frequency of the desired radio station
- **Station directory** — to access a website with a list of radio stations
- **Visual Radio** — to start visual radio manually (If available and supported)
- **Enable visual serv.** — Select **Automatically** to set whether Visual Radio (network service) automatically starts when you turn on the radio. Some radio stations may send text or graphical information that you can view using the Visual Radio application. To check the availability and costs, contact your service provider.


When an application using a packet data or HSCSD connection sends or receives data, it may interfere with the radio.

## Voice recorder

Record speech, sound, or an active call, and save them in **Gallery**. This is useful when recording a name and phone number to write down later.

### Record sound

1. Select **Menu** > **Media** > **Recorder**. To use the graphical keys , , or  on the display, scroll left or right to the desired key, and select it.
2. To start the recording, select . To start the recording during a call, select **Options** > **Record**. While recording a call, all parties to the call hear a faint beeping. When recording a call, hold the device in the normal position near to your ear. To pause the recording, select .

3. To end the recording, select . The recording is saved in **Gallery** > **Recordings**.

Select from the following **Options**:

- **Play last recorded** — to listen to the latest recording
- **Send last recorded** — to send the last recording
- **Recordings list** — Select **Recordings** to see the list of recordings in Gallery

## Equalizer

Control the sound when using the music player by amplifying or diminishing frequency bands.

Select **Menu** > **Media** > **Equaliser**.

To activate a set, scroll to one of the equalizer sets, and select **Activate**.

To view, edit, or rename a selected set, select **Options** > **View**, **Edit**, or **Rename**.

Not all sets can be edited or renamed.

## Stereo widening

Stereo widening enhances the audio output of the device when you are using a stereo headset by enabling a wider stereo sound effect.

To change the setting, select **Menu** > **Media** > **Stereo widening**.

# Push to talk

Push to talk (PTT) is a two-way radio service available over a GPRS cellular network (network service).

You can use PTT to have a conversation with one person or with a group of people (channel) having compatible devices. While you are connected to the PTT service, you can use the other functions of the device.

To check availability, costs, additional features and to subscribe to the service, contact your service provider. Roaming services may be more limited than for normal calls. This feature may not be available, depending on your phone.

Before you can use the PTT service, you must define the required PTT service settings. See "PTT settings," p. 55. See "Configuration settings," p. 56.

## PTT channels

### PTT channel types

A PTT channel comprises a group of people (for example, friends or a work team) who joined the channel after they were invited. When you call a channel, all members joined to the channel hear the call simultaneously.

In a **Public channel**, every channel member can invite other persons; in a **Private channel**, only the channel creator can invite others.

You can set the status of each channel to **Active** or **Inactive**.


The number of active channels and the number of members per channel is limited. Contact your service provider for details.

## Create a channel

To add a channel, select **Menu > Push to talk > Add channel**, and enter the settings in the form fields.

To send an invitation to the channel, select **Yes**. To send further invitations, select **Menu > Push to talk > Channel list**, a channel, and **Options > Send invitation**.

## Switch PTT on and off

To connect to the PTT service, select **Menu > Push to talk > Switch PTT on**.  indicates the PTT connection.

 indicates that the service is temporarily unavailable.

If you have added channels to the phone, you are automatically joined to the active channels.

To disconnect from the PTT service, select **Switch PTT off**.

You may assign a default function to the PTT (volume up) key to open the channel list, the contacts list, or a single channel or contact. See "PTT settings," p. 55.

## Make and receive a PTT call



**Warning:** Do not hold the device near your ear when the loudspeaker is in use, because the volume may be extremely loud.

To make a channel call, a one-to-one call, or a call to multiple recipients, you must hold the PTT (volume up) key as long as you talk. To listen to the response, release the PTT (volume up) key.

Check the login status of your contacts in **Menu > Push to talk > Contacts list**: - person available, - person unknown, - person does not want to be disturbed, but can receive callback request, - person has PTT switched off.

This service depends on your network operator and is only available for subscribed contacts. To subscribe a contact, select **Options > Subscribe contact**, or if one or more contacts are already marked, **Subscribe marked**.

## Make a channel call

To make a call to a channel, select **Channel list** in the PTT menu, scroll to the desired channel, and press and hold the PTT (volume up) key.

## Make a one-to-one call

To start a one-to-one call, select **Menu > Contacts > Names**, or **Menu > Push to talk > Callback inbox**, **Channel list**, or **Contacts list**. Select a contact, a member, or a nickname, and press and hold the PTT (volume up) key.

## Make a PTT call to multiple recipients

You can select multiple PTT contacts from the contact list.

1. Select **Menu > Push to talk > Contacts list**, and mark the desired contacts.
2. Press and hold the PTT (volume up) key to start the call. The participating contacts are shown on the display as soon as they join the call.
3. Press and hold the PTT (volume up) key to talk to them. Release the PTT (volume up) key to hear the response.
4. Press the end key to terminate the call.

## Receive a PTT call

A short tone notifies you of an incoming PTT call, which you can accept or reject.

When you press and hold the PTT (volume up) key while the caller is talking, you hear a queuing tone, and **Queuing** is displayed. Wait for the other person to finish; then you can talk immediately.

## Callback requests

### Send a callback request

If you make a one-to-one call and do not get a response, you can send a callback request from following lists:

- **Menu** > **Contacts** > **Names**
- **Menu** > **Push to talk** > **Callback inbox**, **Channel list**, or **Contacts list**

Select a contact, a member, or a nickname and **Options** > **Send PTT callback**.

### Respond to a callback request

When someone sends you a callback request, **Callback request received** is displayed in the standby mode. To open the **Callback inbox**, select **View**. The list of nicknames of the persons who have sent you callback requests is shown. To make a one-to-one call, select the desired request, and press and hold the PTT (volume up) key.

## Add a one-to-one contact

You can save the names of persons to whom you often make one-to-one calls in the following ways:

- To add a PTT address to a name in **Contacts**, search for the desired contact, and select **Details** > **Options** > **Add detail** > **PTT address**. A contact appears in the PTT contact list only if you enter a PTT address.
- To add a contact to the PTT contacts list, select **Menu** > **Push to talk** > **Contacts list** > **Options** > **Add contact**.
- To add a contact from the channel list, connect to the PTT service, select **Channel list**, and scroll to the desired channel. Select **Members**, scroll to the member whose contact information you want to save, and select **Options**.
- To add a new contact, select **Save as**. To add a PTT address to a name in **Contacts**, select **Add to contact**.

## PTT settings

Select **Menu** > **Push to talk** > **PTT settings** and from the following options:

- **1 to 1 calls** — Select **On** to allow the reception of incoming one-to-one calls. To set the device to first notify you of incoming one-to-one calls with a ringing tone, select **Notify**.
- **PTT key default function** — to set the PTT (volume up) key to one of the following functions: **Open contact list**, **Open channel list**, or **Call contact/**

- group.** Select a contact, a group, or **Call PTT channel**; and select a channel. When you press and hold the PTT (volume up) key, the selected function is performed.
- Show my login status** — to enable or disable the sending of the login status
- PTT status in startup** — Select **Yes** or **Ask first** to automatically connect to the PTT service when you switch the device on.
- Push to talk when abroad** — to switch the PTT service on or off when the device is used outside of the home network

## Applications

You can manage applications and games. These files are stored in the device memory or an attached memory card and may be arranged in folders.

You can format, lock, and unlock the memory card. See "Memory card," p. 47.

### Launch a game

Your device software may include some games.

Select **Menu** > **Applications** > **Games**. Scroll to the desired game, and select **Open**.

To set sounds, lights, and shakes for the game, select **Menu** > **Applications** > **Options** > **App. settings**. You

- Send my PTT address** — Select **No** to hide your PTT address from channel and one-to-one calls.

## Configuration settings

You may receive the settings for connecting to the service from your service provider. See "Configuration setting service," p. 9. You can also enter the settings manually. See "Configuration," p. 44.

To select the settings for connecting to the service, select **Menu** > **Push to talk** > **Config. settings**.

can select more options. See "Application options," p. 56.

### Launch an application

Your device software may include some Java applications.

Select **Menu** > **Applications** > **Collection**. Scroll to an application, and select **Open**.

### Application options

- Update version** — to verify that a new version of the application is available for download from the web (network service)



- **Web page** — to provide further information or additional data for the application from an internet page (network service), if available
- **App. access** — to restrict the application from accessing the network

## Download an application

Your device supports J2ME Java applications. Ensure that the application is compatible with your device before downloading it.



**Important:** Only install and use applications and other software from trusted sources, such as applications that have passed the Java Verified™ testing.

You can download new Java applications and games in different ways.

- Select **Menu** > **Applications** > **Options** > **Downloads** > **App. downloads**; the list of available bookmarks is shown. See "Bookmarks," p. 61.
- Use the Nokia Application Installer from PC Suite to download the applications to your device.

For the availability of different services, pricing, and tariffs, contact your service provider.

Your device may have some bookmarks or links preinstalled for or may allow access to sites provided by third parties not affiliated with Nokia. Nokia does not endorse or assume any liability for these sites. If you choose to access them, you should take the same precautions, for security or content, as you would with any internet site.

## Organizer

### Alarm clock

To set the device to sound an alarm at a desired time, select **Menu** > **Organiser** > **Alarm clock**.

### Set the alarm

To set the alarm, select **Alarm time**, and enter the alarm time.

To change the alarm time when the alarm time is set, select **On**.

To set the device to alert you on selected days of the week, select **Repeat alarm**.

To select the alarm tone or set the radio as the alarm tone, select **Alarm tone**. If you select the radio as an alarm tone, connect the headset to the device.

To set a snooze time-out, select **Snooze time-out** and the time.

## Stop the alarm

When the alarm time is reached, the device sounds an alert tone and flashes **Alarm!** and the current time on the display, even if the device is switched off.

To stop the alarm, select **Stop**. If you let the device continue to sound the alarm for a minute or select **Snooze**, the alarm stops for the time you set in **Snooze time-out**, then resumes.

If the alarm time is reached while the device is switched off, the device switches itself on and starts sounding the alarm tone. If you select **Stop**, the device asks whether you want to activate the device for calls. Select **No** to switch off the device or **Yes** to make and receive calls. Do not select **Yes** when wireless device use may cause interference or danger.

## Calendar






Select **Menu** > **Organiser** > **Calendar**.

The current day has a frame around the number. If there are any notes set for the day, the day is in bold type. To view the day notes, select **View**. To view a week, select **Options** > **Week view**. To delete all notes in the calendar, select the month or week view, and **Options** > **Delete all notes**.


In **Settings** you can set the date, time, time zone, date or time format, date separator, default view, or the first day of the week. In **Auto-delete notes** you can set the device to delete old notes automatically after a specified time.

## Make a calendar note

Select **Menu** > **Organiser** > **Calendar**.

Scroll to the date, and select **Options** > **Make a note** and one of the following note types:  **Meeting**,  **Call**,  **Birthday**,  **Memo**, or  **Reminder**. Fill in the fields.

## Note alarm

The device displays the note, and, if an alarm is set, sounds a tone. If a call note  is displayed, press the call key to make the call.

To stop the alarm and to view the note, select **View**. To stop the alarm for a while, select **Snooze**. To stop the alarm without viewing the note, select **Exit**.

## To-do list

Save a note for a task that you must do.

Select **Menu** > **Organiser** > **To-do list**. To make a note if no note is added, select **Add note**; otherwise, select **Options** > **Add**. Fill in the fields, and select **Save**.

To view a note, scroll to it, and select **View**. While viewing a note, you can also select an option to edit the attributes. You can also select an option to delete the selected note or delete all.

## Notes

To write and send notes, select **Menu > Organiser > Notes**.

To make a note if no note is added, select **Add note**; otherwise, select **Options > Make a note**. Write the note, and select **Save**.

## Calculator

The calculator in your device provides basic arithmetic and trigonometric functions, calculates the square and the square root, the inverse of a number, and converts currency values.



**Note:** This calculator has limited accuracy and is designed for simple calculations.

**Calculations**, Select **Menu > Organiser > Calculator**. When **0** is displayed on the screen, enter the first number in the calculation. Press **#** for a decimal point. Scroll to the desired operation or function, or select it from the **Options**. Enter the second number. Repeat this sequence as many times as it is necessary.

**Currency conversion**, To perform a currency conversion select **Options > Exchange rate**. Select either of the displayed options. Enter the exchange rate,

press **#** for a decimal point, and select **OK**. The exchange rate remains in the memory until you replace it with another one. To perform the currency conversion, enter the amount to be converted, and select **Options > In domestic** or **In foreign**.



**Note:** When you change the base currency, you must enter new exchange rates because all previously set exchange rates are cleared.

## Timers

### Countdown timer

1. To activate the countdown timer, select **Menu > Organiser > Timer > Normal timer**, enter the alarm time, and write a note that is displayed when the time expires. To change the countdown time, select **Change time**.
2. To start the timer, select **Start**.
3. To stop the timer, select **Stop timer**.

### Interval timer

1. To have an interval timer with up to 10 intervals started, first enter the intervals.
2. Select **Menu > Organiser > Timer > Interval timer**.
3. To start the timer, select **Start timer > Start**.

## Stopwatch

You can measure time, take intermediate times, or take lap times using the stopwatch. During timing, the other functions of the device can be used.

Using the stopwatch or allowing it to run in the background when using other features increases the demand on battery power and reduces the battery life.

Select **Menu** > **Organiser** > **Stopwatch** and from the following options:

- **Split timing** — to take intermediate times. To start the time observation, select **Start**. Select **Split** every time that you want to take an intermediate time. To

stop the time observation, select **Stop**. To save the measured time, select **Save**. To start the time observation again, select **Options** > **Start**. The new time is added to the previous time. To reset the time without saving it, select **Reset**.

- **Lap timing** — to take lap times
- **Continue** — to view the timing that you have set in the background
- **Show last** — to view the most recently measured time if the stopwatch is not reset
- **View times** or **Delete times** — to view or delete the saved times

To set the stopwatch timing in the background, press the end key.

## Web



**Important:** Use only services that you trust and that offer adequate security and protection against harmful software.

With your device browser, access various mobile internet services that use wireless markup language (WML) or extensible hypertext markup language (XHTML) on their pages. Appearance may vary due to screen size. You may not be able to view all details of the internet pages.

Check the availability of these services, pricing, tariffs, and instructions with your service provider.

## Set up browsing

You may receive the configuration settings required for browsing as a configuration message from the service provider that offers the service that you want to use. See "Configuration setting service," p. 9.

You can also enter all the configuration settings manually. See "Configuration," p. 44.

## Connect to a service

Ensure that the correct configuration settings of the service are activated.

1. To select the settings for connecting to the service, select **Menu > Web > Settings > Configuration settings**.
2. Select **Configuration**. Only the configurations that support browsing service are shown. Select a service provider, **Default**, or **Personal config**, for browsing. See "Set up browsing," p. 60.
3. Select **Account** and a browsing service account contained in the active configuration settings.
4. Select **Display terminal window > Yes** to perform manual user authentication for intranet connections.

Make a connection to the service in one of the following ways: Select **Menu > Web > Home**; or in the standby mode, press and hold **0**.

To select a bookmark of the service, select **Menu > Web > Bookmarks**.

To select the last URL, select **Menu > Web > Last web address**.

To enter the address of the service, select **Menu > Web > Go to address**. Enter the address of the service, and select **OK**.

## Browse pages

After you make a connection to the service, you can start browsing its pages. The function of the device keys may vary in different services. Follow the text guides on the device display. For more information, contact your service provider.

## Browse with phone keys

To browse through the page, scroll in any direction.

To select an item, press the call key or **Select**.

To enter letters and numbers, press **0** to **9**.

To enter special characters, press **\***.

## Direct calling

While browsing, you can make a phone call and save a name and a phone number from a page.

## Bookmarks

You can save page addresses as bookmarks in the device memory.

1. While browsing, select **Options > Bookmarks**; or in the standby mode, select **Menu > Web > Bookmarks**.
2. Select a bookmark, or press the call key to connect to the page.
3. Select **Options** to create and manage bookmarks.

Your device may have some bookmarks or links preinstalled for or may allow access to sites provided by third parties not affiliated with Nokia. Nokia does not endorse or assume any liability for these sites. If you choose to access them, you should take the same precautions, for security or content, as you would with any internet site.

When you receive a bookmark, **1 bookmark received** is displayed. To view the bookmark, select **Show**.

## Appearance settings

While browsing, select **Options > Other options > Appear. settings**; or in the standby mode, select **Menu > Web > Settings > Appearance settings** and from the following options:

- **Text wrapping** — to select how the text is displayed
- **Font size** — to set the font size
- **Show images** — Select **No** to hide images on the page.
- **Alerts** — Select **Alert for unsecure connection > Yes** to set the device to alert you when a secure connection changes to an unsecure connection while browsing.
- **Alerts** — Select **Alert for unsecure items > Yes** to set the device to alert when a secure page contains an unsecure item. These alerts do not guarantee a secure connection. See "Browser security," p. 63.
- **Character encoding** — Select **Content encoding** to set the encoding for the browser page content.
- **Character encoding** — Select **Unicode (UTF-8) web addresses > On** to set the device to send a URL as UTF-8 encoding.
- **Screen size** — to set the screen layout to **Full** or **Small**
- **JavaScript** — to enable the Java scripts

## Security settings

### Cookies

A cookie is data that a site saves in the cache memory of your device. Cookies are saved until you clear the cache memory. See "Cache memory," p. 63.

While browsing, select **Options > Other options > Security > Cookie settings**; or in the standby mode, select **Menu > Web > Settings > Security settings > Cookies**.

To allow or prevent the device from receiving cookies, select **Allow** or **Reject**.

### Scripts over secure connection

You can select whether to run scripts from a secure page. The device supports WML scripts.

While browsing, to allow the scripts, select **Options > Other options > Security > WMLScript sett.**; or in the standby mode, select **Menu > Web > Settings > Security settings > WMLScripts over secure connection > Allow**.

## Download settings

To automatically save all downloaded files in **Gallery**, select **Menu > Web > Settings > Downloading settings > Automatic saving > On**.

## Service inbox

The device is able to receive service messages sent by your service provider (network service). Service messages are notifications (for example, news headlines) that may contain a text message or an address of a service.

### Service inbox access

Select **Show** to access the **Service inbox** when you receive a service message.

If you select **Exit**, the message is moved to the **Service inbox**.

To access the **Service inbox** later, select **Menu** > **Web** > **Service inbox**. Scroll to the message you want, and select **Retrieve** to activate the browser and download the complete message.

To display detailed information on the service notification or delete the message, select **Options** > **Details** or **Delete**.

### Service inbox settings

Select **Menu** > **Web** > **Settings** > **Service inbox settings** and from the following options:

- **Service messages** — to set whether you want to receive service messages
- **Message filter** — Select **On** to set the device to receive service messages only from content authors

approved by the service provider. To view the list of the approved content authors, select **Trusted channels**.

- **Automatic connection** — Select **On** to set the device to automatically activate the browser from the standby mode, when the device has received a service message. If you select **Off**, the device activates the browser only after you select **Retrieve** when the device has received a service message.

## Cache memory

A cache is a memory location that is used to store data temporarily. If you have tried to access or have accessed confidential information requiring passwords, empty the cache after each use. The information or services you have accessed are stored in the cache.

To clear the cache while browsing, select **Options** > **Other options** > **Clear the cache**.

In the standby mode, select **Menu** > **Web** > **Clear the cache**.

## Browser security

Security features may be required for some services, such as online banking or shopping. For such connections you need security certificates and possibly a security module, which may be available on your SIM card. For more information, contact your service provider.

## Security module

The security module improves security services for applications requiring a browser connection and allows you to use a digital signature. The security module may contain certificates as well as private and public keys. The certificates are saved in the security module by the service provider.

To view or change the security module settings, select [Menu](#) > [Settings](#) > [Security](#) > [Security module settings](#).

## Certificates



**Important:** Even if the use of certificates makes the risks involved in remote connections and software installation considerably smaller, they must be used correctly in order to benefit from increased security. The existence of a certificate does not offer any protection by itself; the certificate manager must contain correct, authentic, or trusted certificates for increased security to be available. Certificates have a restricted lifetime. If "Expired certificate" or "Certificate not valid yet" is shown even if the certificate should be valid, check that the current date and time in your device are correct.

There are three kinds of certificates: server certificates, authority certificates, and user certificates. You may receive these certificates from your service provider. Authority certificates and user certificates may also be saved in the security module by your service provider.

To view the list of the authority or user certificates downloaded to your phone, select [Menu](#) > [Settings](#) >

[Security](#) > [Authority certificates](#) or [User certificates](#).




is displayed during a connection if the data transmission between the phone and the content server is encrypted.

The security icon does not indicate that the data transmission between the gateway and the content server (or place where the requested resource is stored) is secure. The service provider secures the data transmission between the gateway and the content server.

## Digital signature

You can create digital signatures with your phone if your SIM card has a security module. The digital signature is the same as signing your name to a paper bill, contract, or other document.

To create a digital signature, select a link on a page (for example, the title of the book you want to buy and its price). The text to be signed is shown and may include the amount and date.

Check that the header text is [Read](#) and that the digital signature icon  is shown. If the digital signature icon does not appear, there is a security breach; do not enter any personal data (such as your signing PIN).

To sign the text, read all of the text first, and select [Sign](#). The text may not fit within a single screen. Therefore, make sure to scroll through and read all of the text before signing.



Select the user certificate you want to use, and enter the signing PIN. The digital signature icon disappears,

and the service may display a confirmation of your purchase.

## SIM services

Your SIM card may provide additional services. You can access this menu only if it is supported by your SIM card. The name and contents of the menu depend on the available services.

For availability and information on using SIM card services, contact your SIM card vendor. This may be the service provider or other vendor.

To set the phone to show you the confirmation messages sent between your phone and the network when you are using the SIM services, select **Menu** > **Settings** > **Phone** > **Confirm SIM service actions** > **Yes**.

Accessing these services may involve sending messages or making a phone call for which you may be charged.

## PC connectivity

Send and receive e-mail, and access the internet when your device is connected to a compatible PC through a Bluetooth, an infrared, or a data cable connection. Use your device with a variety of PC connectivity and data communications applications.

### Nokia PC Suite

With Nokia PC Suite you can synchronize contacts, calendar, notes, and to-do notes between your device and the compatible PC or a remote internet server

(network service). You may find more information and PC Suite on the Nokia website. See "Nokia support," p. 10.

### Packet data, HSCSD, and CSD

With your phone, you can use the packet data, high-speed circuit switched data (HSCSD), and circuit switched data (CSD, **GSM data**) data services. For

availability and subscription to data services, contact your service provider.

The use of HSCSD services consumes the battery faster than normal voice or data calls.

## Bluetooth

Use Bluetooth technology to connect your compatible laptop to the internet. Your phone must have activated a service provider that supports internet access, and your PC has to support Bluetooth PAN (personal area network). After connecting to the network access point (NAP) service of the phone and pairing with your PC, your phone automatically opens a packet data connection to the internet. PC Suite software installation is not necessary when using the NAP service of the phone. See "Bluetooth wireless technology," p. 40.

## Data communication applications

For information on using a data communication application, refer to the documentation provided with it.

Making or answering phone calls during a computer connection is not recommended as it might disrupt the operation.

For better performance during data calls, place the device on a stationary surface with the keypad facing downward. Do not move the device during a data call. For example, do not hold the device during a data call.

## Genuine enhancements



**Warning:** Use only batteries, chargers, and enhancements approved by Nokia for use with this particular model. The use of any other types may invalidate any approval or warranty, and may be dangerous.

A new extensive range of enhancements is available for your device. Select the enhancements that accommodate your specific communication needs.



# Enhancements

Practical rules about accessories and enhancements

- Keep all accessories and enhancements out of the reach of small children.
- When you disconnect the power cord of any accessory or enhancement, grasp and pull the plug, not the cord.
- Check regularly that enhancements installed in a vehicle are mounted and are operating properly.
- Installation of any complex car enhancements must be made by qualified personnel only.

## Battery

Type	Talk time	Standby
BL-5C	Up to 3.5 hours	Up to 16 days



**Important:** Battery talk and standby times are estimates only and depend on signal strength, network conditions, features used, battery age and condition, temperatures to which battery is exposed, use in digital mode, and many other factors. The amount of time a device is used for calls will affect its standby time. Likewise, the amount of time that the device is turned on and in the standby mode will affect its talk time.

# Battery

## Battery information

Your device is powered by a rechargeable battery. The battery can be charged and discharged hundreds of times, but it will eventually wear out. When the talk and standby times are noticeably shorter than normal, replace the battery. Use only Nokia approved batteries, and recharge your battery only with Nokia approved chargers designated for this device.

If a replacement battery is being used for the first time or if the battery has not been used for a prolonged period, it may be necessary to connect the charger, then disconnect and reconnect it to begin charging the battery.

Unplug the charger from the electrical plug and the device when not in use. Do not leave a fully charged battery connected to a charger, since overcharging may shorten its lifetime. If left unused, a fully charged battery will lose its charge over time.

If the battery is completely discharged, it may take several minutes before the charging indicator appears on the display or before any calls can be made.

Use the battery only for its intended purpose. Never use any charger or battery that is damaged.

Do not short-circuit the battery. Accidental short-circuiting can occur when a metallic object such as a coin, clip, or pen causes direct connection of the positive (+) and negative (-) terminals of the battery. (These look like metal strips on the battery.) This might happen, for example, when you carry a spare battery in your pocket or purse. Short-circuiting the terminals may damage the battery or the connecting object.

Leaving the battery in hot or cold places, such as in a closed car in summer or winter conditions, will reduce the capacity and lifetime of the battery. Always try to keep the battery between 15°C and 25°C (59°F and 77°F). A device with a hot or cold battery may not work temporarily, even when the battery is fully charged. Battery performance is particularly limited in temperatures well below freezing.

Do not dispose of batteries in a fire as they may explode. Batteries may also explode if damaged. Dispose of batteries according to local regulations. Please recycle when possible. Do not dispose as household waste.

Do not dismantle or shred cells or batteries. In the event of a battery leak, do not allow the liquid to come in contact with the skin or eyes. In the event of such a leak, flush your skin or eyes immediately with water, or seek medical help.

## Nokia battery authentication guidelines

Always use original Nokia batteries for your safety. To check that you are getting an original Nokia battery, purchase it from an authorised Nokia dealer, and inspect the hologram label using the following steps:

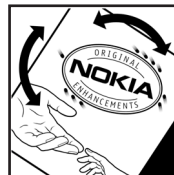
Successful completion of the steps is not a total assurance of the authenticity of the battery. If you have any reason to believe that your battery is not an authentic, original Nokia battery, you should refrain from using it, and take it to the nearest authorised Nokia service point or dealer for assistance. Your authorised Nokia service point or dealer will inspect the battery for authenticity. If authenticity cannot be verified, return the battery to the place of purchase.

### Authenticate hologram

- 1 When you look at the hologram on the label, you should see the Nokia connecting hands symbol from one angle and the Nokia Original Enhancements logo when looking from another angle.



- 2 When you angle the hologram left, right, down and up, you should see 1, 2, 3 and 4 dots on each side respectively.



### What if your battery is not authentic?

If you cannot confirm that your Nokia battery with the hologram on the label is an authentic Nokia battery, please do not use the battery. Take it to the nearest authorised Nokia service point or dealer for assistance. The use of a battery that is not approved by the manufacturer may be dangerous and may result in poor performance and damage to your device and its enhancements. It may also invalidate any approval or warranty applying to the device.

To find out more about original Nokia batteries, visit [www.nokia.com/battery](http://www.nokia.com/battery).

## Care and maintenance

Your device is a product of superior design and craftsmanship and should be treated with care. The following suggestions will help you protect your warranty coverage.

- Keep the device dry. Precipitation, humidity, and all types of liquids or moisture can contain minerals that will corrode electronic circuits. If your device does get wet, remove the battery, and allow the device to dry completely before replacing it.
- Do not use or store the device in dusty, dirty areas. Its moving parts and electronic components can be damaged.
- Do not store the device in hot areas. High temperatures can shorten the life of electronic devices, damage batteries, and warp or melt certain plastics.
- Do not store the device in cold areas. When the device returns to its normal temperature, moisture can form inside the device and damage electronic circuit boards.
- Do not attempt to open the device other than as instructed in this guide.
- Do not drop, knock, or shake the device. Rough handling can break internal circuit boards and fine mechanics.

- Do not use harsh chemicals, cleaning solvents, or strong detergents to clean the device.
- Do not paint the device. Paint can clog the moving parts and prevent proper operation.
- Use a soft, clean, dry cloth to clean any lenses, such as camera, proximity sensor, and light sensor lenses.
- Use only the supplied or an approved replacement antenna. Unauthorized antennas, modifications, or attachments could damage the device and may violate regulations governing radio devices.
- Use chargers indoors.
- Always create a backup of data you want to keep, such as contacts and calendar notes.
- To reset the device from time to time for optimum performance, power off the device and remove the battery.

These suggestions apply equally to your device, battery, charger, or any enhancement. If any device is not working properly, take it to the nearest authorized service facility for service.

# Additional safety information

## Small children

Your device and its enhancements may contain small parts. Keep them out of the reach of small children.

## Operating environment

This device meets RF exposure guidelines when used either in the normal use position against the ear or when positioned at least 2.2 centimeters (7/8 inches) away from the body. When a carry case, belt clip, or holder is used for body-worn operation, it should not contain metal and should position the device the above-stated distance from your body.

To transmit data files or messages, this device requires a quality connection to the network. In some cases, transmission of data files or messages may be delayed until such a connection is available. Ensure the above separation distance instructions are followed until the transmission is completed.

Parts of the device are magnetic. Metallic materials may be attracted to the device. Do not place credit cards or other magnetic storage media near the device, because information stored on them may be erased.

## Medical devices

Operation of any radio transmitting equipment, including wireless phones, may interfere with the functionality of inadequately protected medical devices. Consult a physician or the manufacturer of the medical device to determine if they are adequately shielded from external RF energy or if you have any questions. Switch off your device in health care facilities when any regulations posted in these areas instruct you to do so. Hospitals or health care facilities may be using equipment that could be sensitive to external RF energy.

## Implanted medical devices

Manufacturers of medical devices recommend that a minimum separation of 15.3 centimeters (6 inches) should be maintained between a wireless device and an implanted medical device, such as a pacemaker or implanted cardioverter defibrillator, to avoid potential interference with the medical device. Persons who have such devices should:

- Always keep the wireless device more than 15.3 centimeters (6 inches) from the medical device when the wireless device is turned on.
- Not carry the wireless device in a breast pocket.

- Hold the wireless device to the ear opposite the medical device to minimize the potential for interference.
- Turn the wireless device off immediately if there is any reason to suspect that interference is taking place.
- Read and follow the directions from the manufacturer of their implanted medical device.

If you have any questions about using your wireless device with an implanted medical device, consult your health care provider.

## Hearing aids

Some digital wireless devices may interfere with some hearing aids. If interference occurs, consult your service provider.

## Vehicles

RF signals may affect improperly installed or inadequately shielded electronic systems in motor vehicles such as electronic fuel injection systems, electronic antiskid (antilock) braking systems, electronic speed control systems, and air bag systems. For more information, check with the manufacturer, or its representative, of your vehicle or any equipment that has been added.

Only qualified personnel should service the device or install the device in a vehicle. Faulty installation or service may be dangerous and may invalidate any warranty that may apply to the device. Check regularly that all wireless device equipment in your vehicle is

mounted and operating properly. Do not store or carry flammable liquids, gases, or explosive materials in the same compartment as the device, its parts, or enhancements. For vehicles equipped with an air bag, remember that air bags inflate with great force. Do not place objects, including installed or portable wireless equipment in the area over the air bag or in the air bag deployment area. If in-vehicle wireless equipment is improperly installed and the air bag inflates, serious injury could result.

Using your device while flying in aircraft is prohibited. Switch off your device before boarding an aircraft. The use of wireless teledevices in an aircraft may be dangerous to the operation of the aircraft, disrupt the wireless telephone network, and may be illegal.

## Potentially explosive environments

Switch off your device when in any area with a potentially explosive atmosphere, and obey all signs and instructions. Potentially explosive atmospheres include areas where you would normally be advised to turn off your vehicle engine. Sparks in such areas could cause an explosion or fire resulting in bodily injury or even death. Switch off the device at refueling points such as near gas pumps at service stations. Observe restrictions on the use of radio equipment in fuel depots, storage, and distribution areas; chemical plants; or where blasting operations are in progress. Areas with a potentially explosive atmosphere are often, but not always, clearly marked. They include below deck on boats, chemical transfer or storage



facilities, vehicles using liquefied petroleum gas (such as propane or butane), and areas where the air contains chemicals or particles such as grain, dust, or metal powders.

## Emergency calls



**Important:** Wireless phones, including this device, operate using radio signals, wireless networks, landline networks, and user-programmed functions. Because of this, connections in all conditions cannot be guaranteed. You should never rely solely on any wireless device for essential communications like medical emergencies.

To make an emergency call:

1. If the device is not on, switch it on. Check for adequate signal strength.  
Some networks may require that a valid SIM card is properly inserted in the device.
2. Press the end key as many times as needed to clear the display and ready the device for calls.
3. Enter the official emergency number for your present location. Emergency numbers vary by location.
4. Press the call key.

If certain features are in use, you may first need to turn those features off before you can make an emergency call. Consult this guide or your service provider for more information.

When making an emergency call, give all the necessary information as accurately as possible. Your wireless device may be the only means of communication at the scene of an accident. Do not end the call until given permission to do so.

## CERTIFICATION INFORMATION (SAR)

**This mobile device meets guidelines for exposure to radio waves.**

Your mobile device is a radio transmitter and receiver. It is designed not to exceed the limits for exposure to radio waves recommended by international guidelines. These guidelines were developed by the independent scientific organization ICNIRP and include safety margins designed to assure the protection of all persons, regardless of age and health.

The exposure guidelines for mobile devices employ a unit of measurement known as the Specific Absorption Rate or SAR. The SAR limit stated in the ICNIRP guidelines is 2.0 watts/kilogram (W/kg) averaged over 10 grams of tissue. Tests for SAR are conducted using standard operating positions with the device transmitting at its highest certified power level in all tested frequency bands. The actual SAR level of an operating device can be below the maximum value because the device is designed to use only the power required to reach the network. That amount changes depending on a number of factors such as how close you are to a network base station. The highest SAR value under the ICNIRP guidelines for use of the device at the ear is 0.96 W/kg.

Use of device accessories and enhancements may result in different SAR values. SAR values may vary depending on national reporting and testing requirements and the network band. Additional SAR information may be provided under product information at [www.nokia.com](http://www.nokia.com).

# Limited Warranty

Nokia Corporation, represented by its Mobile Phones Division ("Nokia") warrants that this Nokia cellular product and/or genuine Nokia accessory ("Product") is free from defects in material and workmanship, according to the following terms and conditions:

1. The limited warranty for the cellular phone, data product and all genuine Nokia accessories (except battery packs) extends for the first twelve (12) months beginning on the date of purchase of the Product.
2. The limited warranty for genuine Nokia battery packs extends for the first six (6) months beginning on the date of purchase of the Product.
3. The limited warranty extends only to the original consumer purchaser ("Consumer") of the Product and is not assignable or transferable to any subsequent purchaser/end user.
4. The limited warranty extends only to Consumers who purchase the Product in one of the countries (or areas) set forth at the end of this document. The limited warranty is only valid in Nokia's intended country (or area) of sale of the Product.
5. During the limited warranty period, Nokia or its authorized service network will repair or replace, at Nokia's option, any defective Product or parts thereof with new or factory rebuilt replacement items, and return the Product to the Consumer in working condition. No charge will be made to the Consumer for either parts or labor in repairing or replacing the Product. All replaced parts, boards or equipment shall become property of Nokia. The external housing and cosmetic parts shall be free of defects at the time of shipment and, therefore, shall not be covered under these limited warranty terms.
6. Repaired Product will be warranted for the balance of the original warranty period or for ninety (90) days from the date of repair, whichever is longer.
7. Upon request from Nokia or its authorized service center, the Consumer must provide purchase receipt or other information to prove the date and place of purchase.
8. Transportation, delivery and handling charges incurred in the transport of the Product to and from Nokia or its authorized service center will be borne by the Consumer.
9. The Consumer shall have no coverage or benefits under this limited warranty if any of the following conditions are applicable:
  - a) The Product has been subject to: abnormal use, abnormal condition, improper storage, exposure to moisture or dampness, exposure to excessive temperature or other such environmental conditions, unauthorized modifications, unauthorized connections, unauthorized repair including but not limited to use of unauthorized spare parts in repairs, misuse, neglect, abuse, accident, alteration, improper installation, Acts of God, spill of foods or liquids, maladjustment of customer controls or other acts which are beyond of reasonable control of Nokia, including deficiencies in consumable parts such as fuses and breakage or damage to antennas, unless caused directly by defects in materials or workmanship, and normal wear and tear of the Product.

- b) Nokia was not notified by Consumer of the alleged defect or malfunction of the Product during the applicable limited warranty period.
  - c) The Product serial number or the accessory date code has been removed, defaced or altered.
  - d) The defect or damage was caused by defective function of the cellular system or by inadequate signal reception by the external antenna.
  - e) The Product was used with or connected to accessory not supplied by Nokia, not fit for use with Nokia cellular phones or used in other than its intended use.
  - f) The battery was short circuited or seals of the battery enclosure or cells are broken or show evidence of tampering or the battery was used in equipment other than that for which it has been specified.
10. If a problem develops during the limited warranty period, the Consumer should take the following step-by-step procedure:
- a) The Consumer shall return the Product to the place of purchase for repair or replacement processing.
  - b) If "a" is not convenient, the Consumer may contact the local Nokia office for the location of the nearest authorized service center.
  - c) The Consumer shall arrange for the Product to be delivered to the authorized service center. Expenses related to removing the Product from an installation are not covered under this limited warranty.
  - d) The Consumer will be billed for any parts or labor charges not covered by this limited warranty. The Consumer shall be responsible for expenses related to reinstallation of the Product.
- e) In case of certain operator specific features in the Product such as SIM-lock, Nokia reserves the right to refer the Consumer to the relevant cellular operator before service will be provided.
  - f) If the Product is returned to Nokia after the expiration of the warranty period, Nokia's normal service policies shall apply and the Consumer will be charged accordingly.
11. ANY IMPLIED WARRANTY OF MERCHANTABILITY, OR FITNESS FOR A PARTICULAR PURPOSE OR USE, SHALL BE LIMITED TO THE DURATION OF THE FOREGOING WRITTEN WARRANTY. OTHERWISE, THE FOREGOING WARRANTY IS THE PURCHASER'S SOLE AND EXCLUSIVE REMEDY AND IS IN LIEU OF ALL OTHER WARRANTIES, EXPRESS OR IMPLIED. NOKIA SHALL NOT BE LIABLE FOR INCIDENTAL OR CONSEQUENTIAL DAMAGES OR A LOSS OF ANTICIPATED BENEFITS OR PROFITS, LOSS OR IMPAIRMENT OF PRIVACY OF CONVERSATIONS, WORK STOPPAGE OR LOSS OR IMPAIRMENT OF DATA ARISING OUT OF THE USE OR INABILITY TO USE THE PRODUCT.
- 12. The benefits conferred by this limited warranty are in addition to all other rights and remedies under any applicable mandatory legislation as may be in force from country (or area) to country (or area).
  - 13. Nokia neither assumes nor authorizes any authorized service center or any person or entity to assume for it any other obligation or liability beyond that which is expressly provided for in this limited warranty.
  - 14. All warranty information, product features and specifications are subject to change without notice.
  - 15. The countries (or areas) in which this limited warranty is in force, subject to clause 4 above, are Hong Kong SAR and Macau SAR.

# Index

## A

access codes 9  
 active standby 16, 38  
 alarm clock 57  
 antenna 13  
 anykey answer 43  
 applications 56  
 audio messaging 25  
 automatic redial 43

## B

background image 38  
 barring password 9  
 battery 68  
   charging 13  
 battery charge status 15  
 blacklist 27  
 Bluetooth 40, 65, 66  
 bookmarks 61  
 browser 60  
   appearance settings 62  
   bookmarks 61  
   browse pages 61  
   cache 63  
   certificates 64  
   cookies 62  
   digital signature 64

security 63  
 WML scripts 62

## C

cache memory 63  
 calculator 59  
 calendar 58  
   note 58  
 call divert 43  
 call functions 18  
 call key 14  
 call log 36  
 call waiting 19, 43  
 caller id 43  
 calls  
   answer 19  
   dialed 36  
   international 18  
   making of 18  
   missed 36  
   options 19  
   received 36  
   reject 19  
   voice dialing 19  
 camera 48, 49  
 capitals 20  
 case  
   lower 20

  upper 20  
 certificates 64  
 channel types 53  
 characters 20  
 charge the battery 13  
 clock 38  
 codes 9  
 configuration 44  
 configuration setting service 9  
 connectivity 65  
 contact information 10  
 contacts 33  
   business cards 35  
   copy 34  
   delete 34  
   dialing shortcuts 35  
   edit details 34  
   groups 34  
   info numbers 35  
   move 34  
   my numbers 35  
   save details 33  
   save names 33  
   save phone numbers 33  
   search 34  
   service numbers 35  
   settings 33  
   synchronize 35

cookies 62  
 countdown timer 59  
 CSD 65  
 currency conversion 59  
 customer service 10

## D

**data**  
     communication 66  
     transfer 41  
**data cable** 42, 65  
**date settings** 38  
**dialing** 18  
**dialing shortcuts** 18, 35  
**digital signature** 64  
**display** 15, 38  
**downloads** 10, 62

## E

**e-mail application** 26  
**earpiece** 14  
**edit text** 20  
**end key** 14  
**ending a call** 18  
**enhancements** 44  
**equalizer** 52  
**exchange rate** 59

## F

**factory settings** 46  
**flash messages** 24  
**flight mode** 17  
**flight query** 43  
     See also *flight mode*

**FM radio** 51  
**font size** 38

## G

**gallery** 47  
     files 47  
     folders 47  
     print images 47  
**games** 56  
**Genuine enhancements** 66

## H

**handsfree**  
     See *loudspeaker*  
**headphones** 13  
**headset** 13  
**help text** 43  
**HSCSD** 65

## I

**idle mode** 15  
**indicators** 16  
**info messages** 30  
**info numbers** 35  
**installation** 11  
**instant messaging** 27  
**internet** 60  
**interval timer** 59

## J

**junk folder** 27

## K

**keyguard** 17, 43  
**keypad** 14  
**keypad lock** 17  
**keys** 14  
     call key 14  
     end key 14  
     keyguard 17  
     keypad 14  
     keypad lock 17  
     power 14  
     scroll key 14  
     selection keys 14

## L

**language** 43  
     voice playback 43  
**location information** 36  
**log** 36  
**loudspeaker** 14, 19

## M

**media player** 49  
**memory card** 47  
     insert 12  
**memory full** 25  
**menu** 21  
**message center number** 21  
**message sending** 23  
**messages**  
     audio messaging 25  
     delete 31  
     flash messages 24

folders 25  
info messages 30  
postcard 24  
service commands 30  
settings 31  
SIM messages 31  
text 21  
voice messages 30

**microphone 14**

**microSD card**

insert 12

**MMS**

*See multimedia messages*

**multimedia messages 22**

**music player 50**

**my numbers 35**

## N

**navigation 21**

**navigation key**

**Nokia contact information 10**

**note 58**

**notes 59**

**number dialing 18**

**number mode 20**

## O

**offline mode 18**

**operator menu 46**

**organizer 57**

## P

**packet data 65**

**parts 14**

**PC connectivity 65**

**PC Suite 65**

**phone software updates 43**

**phonebook**

*See contacts*

**phonelock**

*See keypad lock*

**PictBridge 42**

**picture 48**

**PIN codes 9**

**positioning 36**

**postcards 24**

**power key 14**

**power saver 38**

**power saving 16**

**predictive text input 20**

**print images 47**

**profiles 37**

**PTT**

*See push to talk*

**PUK codes 9**

**push to talk 53**

settings 56

**pushed messages 63**

## R

**radio 51**

**recorder 52**

**redial 43**

## S

**screen 38**

**screen saver 38**

**scroll key 14**

**scrolling 21**

**security**

browser 63

certificates 64

codes 9

module 64

**security code 9**

**selection keys 14**

**service**

inbox 63

messages 63

**service commands 30**

**service numbers 35**

**services 60**

SIM 65

**settings 37**

active standby 38

Bluetooth 40

browser appearance 62

call 42

clock 38

configuration 44

data transfer 41

date 38

display 38

downloads 62

enhancements 44

font size 38

messages 31

phone 43

power saver 38

profiles 37

push to talk 55, 56

restoring 46

screen saver 38  
 security 44  
 service inbox 63  
 shortcuts 38  
 sleep mode 38  
 standby mode 38  
 themes 37  
 time 38  
 time zone 38  
 tones 37  
 USB data cable 42  
 wallpaper 38  
**shortcuts 16, 38**  
   left selection key 38  
   right selection key 39  
   navigation key 39  
   voice commands 39  
**signal strength 15**  
**SIM**  
   messages 31  
   services 65  
**SIM card 18**  
   installation 11  
**sleep mode 38**  
**SMS**  
   *See text message*  
**software update 10, 45, 46**  
   requesting 46  
**spam filter 27**  
**speed dialling 43**  
**standby mode 15, 38**  
**start up tone 44**  
**status indicators 15**  
**stereo widening 52**  
**stopwatch 60**

strap 14  
 streaming service 49  
 synchronization 41  
**T**  
 take a picture 48  
 text 20  
 text message 21  
 text modes 20  
 themes 37  
 time settings 38  
 time zone 38  
 timer 59  
 to-do list 58  
 tones 37  
 traditional text input 20

**U**  
 unlock keypad 17  
 USB connector 14  
 USB data cable 42

**V**  
 video clips 49  
 visual radio 52  
 voice clarity 43  
 voice commands 39  
 voice dialling 19  
 voice messages 30  
 voice recorder 52  
 volume key 14

**W**  
 wallpaper 38

web 60  
 welcome note 43  
 wireless markup language 60  
 WML scripts 62  
 write text 20

**X**  
 XHTML 60