

Nokia Bluetooth Headset BH-801

User Guide



Issue 1

DECLARATION OF CONFORMITY

Hereby, NOKIA CORPORATION declares that this HS-64W product is in compliance with the essential requirements and other relevant provisions of Directive 1999/5/EC. A copy of the Declaration of Conformity can be found at http://www.nokia.com/phones/declaration_of_conformity/.

CE 0560

© 2006 Nokia. All rights reserved.

Reproduction, transfer, distribution or storage of part or all of the contents in this document in any form without the prior written permission of Nokia is prohibited.

Nokia and Nokia Connecting People are registered trademarks of Nokia Corporation. Other product and company names mentioned herein may be trademarks or tradenames of their respective owners.

Bluetooth is a registered trademark of Bluetooth SIG, Inc.

Nokia operates a policy of ongoing development. Nokia reserves the right to make changes and improvements to any of the products described in this document without prior notice.

Under no circumstances shall Nokia be responsible for any loss of data or income or any special, incidental, consequential or indirect damages howsoever caused.

The contents of this document are provided "as is". Except as required by applicable law, no warranties of any kind, either express or implied, including, but not limited to, the implied warranties of merchantability and fitness for a particular purpose, are made in relation to the accuracy, reliability or contents of this document. Nokia reserves the right to revise this document or withdraw it at any time without prior notice.

The availability of particular products may vary by region. Please check with the Nokia dealer nearest to you.

Unauthorized changes or modifications to this device may void the user's authority to operate the equipment.

Export Controls

This device may contain commodities, technology or software subject to export laws and regulations from the US and other countries. Diversion contrary to law is prohibited.

Issue 1

Contents

1. Introduction	5	Place the headset over your ear	12
Bluetooth wireless technology.....	5	Use the headset with a strap or a clip.....	13
2. Get started	7	Call handling	14
Overview	7	Adjust the earphone volume.....	15
Chargers.....	7	Mute or unmute the microphone...	15
Charge the battery	8	Switch the call between the phone and headset.....	15
Switch the headset on or off.....	9	Use the headset with several phones	15
Pair the headset with a compatible phone.....	9	Clear the settings.....	16
Disconnect the headset.....	10		
Reconnect the headset	10		
Troubleshooting.....	10	4. Battery information	17
3. Basic use.....	12	Care and maintenance.....	18

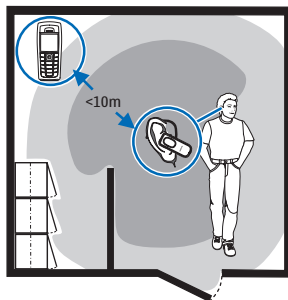
1. Introduction

The Nokia Bluetooth Headset BH-801 allows you the freedom to make and receive calls while on the move or in the office. You can connect the headset to a compatible phone that supports Bluetooth wireless technology.

Read this user guide carefully before using the headset. Also read the user guide for your phone, which provides important safety and maintenance information. Keep the headset and its accessories out of reach of small children.

■ Bluetooth wireless technology

Bluetooth wireless technology allows you to connect compatible devices without cables. A Bluetooth connection does not require that the phone and the headset be in line of sight, but the maximum distance between the devices is 10 meters (30 feet). The closer the phone and the headset are to each other, the better is the performance. The optimal operating range is shown in dark grey in the picture. The connection is subject to interference from distance and obstructions (shown in light grey) or other electronic devices.



Introduction

The headset is compliant with the Bluetooth Specification 2.0 + EDR that supports the following profiles: Headset Profile 1.1 and Hands-Free Profile 1.5. Check with the manufacturers of other devices to determine their compatibility with this device.

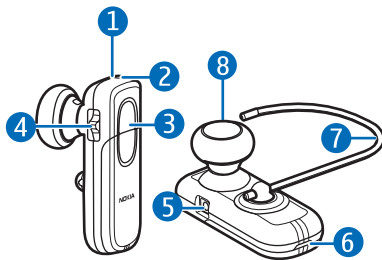
There may be restrictions on using Bluetooth technology in some locations. Check with your local authorities or service provider.

2. Get started

■ Overview

The headset contains the following parts:

- Indicator light (1)
- Power key (2)
- Answer/end key (3)
- Volume key (4)
- Charger connector (5)
- Microphone (6)
- Earloop (7)
- Earpiece (8)



Before using the headset, you must charge the battery and pair the headset with a compatible phone.



Note: Parts of the headset are magnetic. Metallic materials may be attracted to the headset. Do not place credit cards or other magnetic storage media near the headset, because information stored on them may be erased.

■ Chargers

Check the model number of any charger before using it with this headset. The headset is intended for use with the AC-3, AC-4, and DC-4 chargers.



Warning: Use only chargers approved by Nokia for use with this particular enhancement. The use of any other types may invalidate any approval or warranty, and may be dangerous.

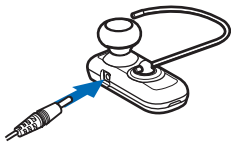
For availability of approved enhancements, please check with your dealer. When you disconnect the power cord of any enhancement, grasp and pull the plug, not the cord.

■ Charge the battery

This device has an internal, nonremovable, rechargeable battery. Do not attempt to remove the battery from the device as you may damage the device.

1. Connect the charger to a wall outlet.
2. Connect the charger cable to the headset.

The red indicator light is displayed during charging. It may take a while before charging starts. If charging does not start, disconnect the charger, plug it in again, and retry. Charging the battery fully may take up to 2 hours.



Ensure that you do not accidentally insert the earloop into the charger connector.

3. When the battery is fully charged, the red indicator light turns off. Disconnect the charger from the headset and the wall outlet.



The fully charged battery has power for up to 6 hours of talk-time or up to 160 hours of standby time. However, the talk and standby times may vary when used with different mobile phones or other compatible Bluetooth devices, usage settings, usage styles, and environments.

When battery power is low, the headset beeps, and the red indicator light starts to flash.

■ Switch the headset on or off

To switch on, press and hold the power key. The headset beeps, and the green indicator light is displayed briefly. When the headset is connected to a paired phone and is ready for use, the blue indicator light flashes slowly. If the headset is not connected to a phone, the green indicator light flashes slowly.

To switch off, press and hold the power key. The headset beeps, and the red indicator light is displayed briefly.

■ Pair the headset with a compatible phone

1. Switch on your phone and the headset.
2. Activate the Bluetooth feature on the phone, and set the phone to search for Bluetooth devices. See the user guide of your phone for instructions.
3. Select the headset (Nokia BH-801) from the list of found devices.
4. Enter the Bluetooth passcode 0000 to pair and connect the headset to your phone. In some phones you may need to make the connection

separately after pairing. See the user guide of your phone for details.
You only need to pair the headset with your phone once.

If the pairing is successful, the headset beeps and appears in the phone menu where you can view the currently paired Bluetooth devices.

Disconnect the headset

To disconnect the headset from your phone (for example, to connect the phone to another Bluetooth device), switch off the headset or disconnect it in the Bluetooth menu of your phone.

You do not need to delete the pairing with the headset to disconnect it.

Reconnect the headset

To connect the headset to your phone, switch on the headset, make the connection in the Bluetooth menu of your phone, or press and hold the answer/end key.

You can set your phone to connect with the headset automatically when the headset is switched on. To do this in Nokia phones, change your paired device settings in the Bluetooth menu.

■ Troubleshooting

If you cannot connect the headset to your phone, do the following:

- Ensure that the headset is charged, switched on, and paired with your phone.
- Ensure that the Bluetooth feature is activated on your phone.

- Check that the headset is within 10 meters (30 feet) of your phone and that there are no obstructions between the headset and the phone, such as walls, or other electronic devices.
- To reset the headset if it stops functioning, although it is charged, plug the headset into a charger, and briefly press the power key and the middle of the volume key. This reset does not clear your settings (for example, pairing settings).

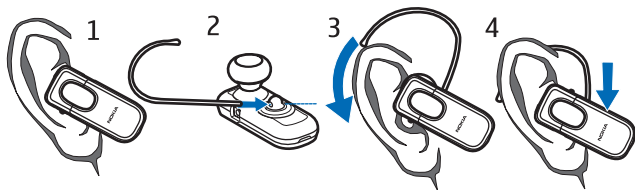
3. Basic use

■ Place the headset over your ear

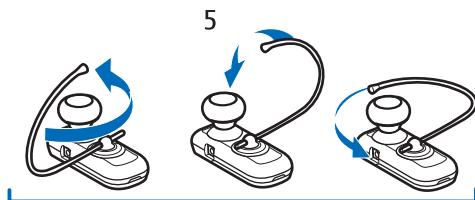
The headset is provided with an earloop that you can use for a better fit on your ear.

To use the headset without the earloop, plug the earpiece into your ear (1), and point the headset toward your mouth.

To use the headset with the earloop, insert the earloop into the small opening at the back of the headset (2). To wear the headset on the right ear, rotate the earloop so that the loop is to the right of the Nokia name. Slide the earloop over your ear (3), and push or pull the earloop to set its length (4). Set the headset so that it points toward your mouth.



To use the headset on the left ear, rotate the earloop so that the loop is to the left of the text (5).



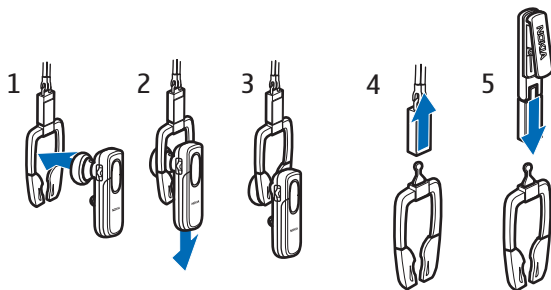
To detach the earloop (for example, to clean it), gently pull it from the headset.

■ Use the headset with a strap or a clip

The headset is supplied with a strap and a clip. When you do not keep the headset on your ear, you can wear it on your neck using the strap or attach it to your clothing using the clip.

To fix the headset to the catch, insert the headset (1), and gently push it downwards (2) until it locks into place. To detach the headset, slide it out through the catch (3).

To use the clip instead of the strap, pull the strap from the catch (4) and push the clip to the catch (5).



■ Call handling

To make a call, use your phone in the normal way when the headset is connected to your phone. The blue indicator light flashes slowly during the call.

If your phone supports last number redialing with this device, briefly press the answer/end key twice when no call is in progress. When you press the answer/end key, always press the middle of the key.

If your phone supports voice dialing with this device, press and hold the answer/end key when no call is in progress, and proceed as described in the user guide of your phone.

When you receive a call, the blue indicator light flashes quickly, and you hear a ringing tone through the headset. To answer the call, press the

answer/end key, or use the phone keys. If the automatic answer function is set to on in your phone, the phone automatically answers the incoming call after one ring.

To reject an incoming call, briefly press the answer/end key twice, or use the phone keys.

To end a call, press the answer/end key, or use the phone keys.

■ Adjust the earphone volume

Press the volume key up to increase or down to decrease the volume during a call. To adjust the volume quickly, press and hold the key in the desired direction.

■ Mute or unmute the microphone

To mute or unmute the microphone during a call, briefly press the middle of the volume key. A long tone sounds.

■ Switch the call between the phone and headset

To switch the call between the headset and a compatible phone, press and hold the answer/end key, or use the respective function in your phone.

■ Use the headset with several phones

You can pair the headset with up to eight phones but connect it to only one phone at a time.

The phone that was first paired with the headset is the default phone. If the headset is switched on within 10 meters (30 feet) of several paired phones, the headset tries to connect to the default phone.

If the headset cannot connect to the default phone, the headset tries to connect to the last used phone. If the headset cannot connect to this phone either, one of the other six paired phones can be connected to the headset. To make the connection, see the user guide of your phone.

■ Clear the settings

If you want to clear all the settings from the headset (for example, the list of paired devices), press and hold the power key and the volume key up for 10 seconds. After the settings are cleared, the headset beeps twice, and the indicator lights alternate for several seconds.

4. Battery information

Your device is powered by a rechargeable battery. The battery can be charged and discharged hundreds of times, but it will eventually wear out. Recharge your battery only with Nokia approved chargers designated for this device.

Unplug the charger from the electrical plug and the device when not in use. Do not leave a fully charged battery connected to a charger, since overcharging may shorten its lifetime. If left unused, a fully charged battery will lose its charge over time.

Never use any charger that is damaged.

Leaving the device in hot or cold places, such as in a closed car in summer or winter conditions, will reduce the capacity and lifetime of the battery. Always try to keep the battery between 15°C and 25°C (59°F and 77°F). A device with a hot or cold battery may not work temporarily, even when the battery is fully charged. Battery performance is particularly limited in temperatures well below freezing.

Do not dispose of batteries in a fire as they may explode. Batteries may also explode if damaged. Dispose of batteries according to local regulations. Please recycle when possible. Do not dispose as household waste.

Care and maintenance

Your device is a product of superior design and craftsmanship and should be treated with care. The suggestions below will help you protect your warranty coverage.

- Keep all accessories and enhancements out of the reach of small children.
- Keep the device dry. Precipitation, humidity, and all types of liquids or moisture can contain minerals that will corrode electronic circuits. If your device does get wet, allow it to dry completely.
- Do not use or store the device in dusty, dirty areas. Its moving parts and electronic components can be damaged.
- Do not store the device in hot areas. High temperatures can shorten the life of electronic devices, damage batteries, and warp or melt certain plastics.
- Do not store the device in cold areas. When the device returns to its normal temperature, moisture can form inside the device and damage electronic circuit boards.
- Do not attempt to open the device.
- Do not drop, knock, or shake the device. Rough handling can break internal circuit boards and fine mechanics.
- Do not use harsh chemicals, cleaning solvents, or strong detergents to clean the device.
- Do not paint the device. Paint can clog the moving parts and prevent proper operation.

All of the above suggestions apply equally to your device, battery, charger, or any enhancement. If any device is not working properly, take it to the nearest authorized service facility for service.